

Product datasheet for **TA321993**

APAF1 Rabbit Polyclonal Antibody

Product data:

Product Type:	Primary Antibodies
Applications:	IHC
Recommended Dilution:	IHC: 25-100 Positive control: Human cervical cancer Predicted cell location: Cytoplasm
Reactivity:	Human, Mouse, Rat
Host:	Rabbit
Isotype:	IgG
Clonality:	Polyclonal
Immunogen:	Synthetic peptide corresponding to a region derived from 8-20 amino acids of Human apoptotic peptidase activating factor 1
Formulation:	PBS pH7.3, 0.05% NaN ₃ , 50% glycerol
Concentration:	lot specific
Purification:	Antigen affinity purification
Conjugation:	Unconjugated
Storage:	Store at -20°C as received.
Stability:	Stable for 12 months from date of receipt.
Gene Name:	apoptotic peptidase activating factor 1
Database Link:	NP_001151 Entrez Gene 11783 Mouse Entrez Gene 78963 Rat Entrez Gene 317 Human O14727

Background: This gene encodes a cytoplasmic protein that initiates apoptosis. This protein contains several copies of the WD-40 domain; a caspase recruitment domain (CARD); and an ATPase domain (NB-ARC). Upon binding cytochrome c and dATP; this protein forms an oligomeric apoptosome. The apoptosome binds and cleaves caspase 9 preproprotein; releasing its mature; activated form. Activated caspase 9 stimulates the subsequent caspase cascade that commits the cell to apoptosis. Alternative splicing results in several transcript variants encoding different isoforms.



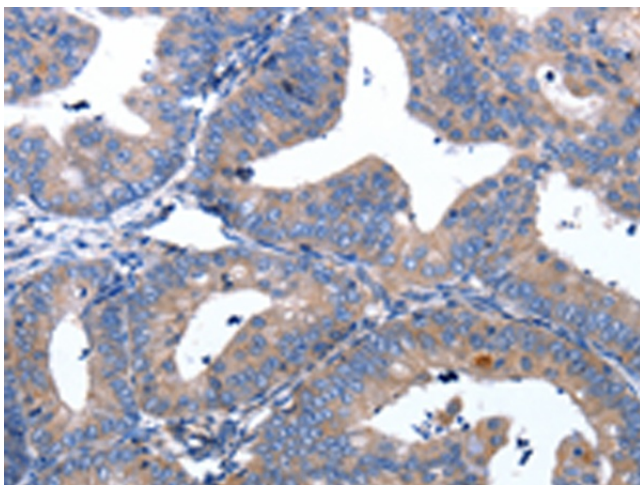
[View online »](#)

Synonyms: APAF-1; CED4

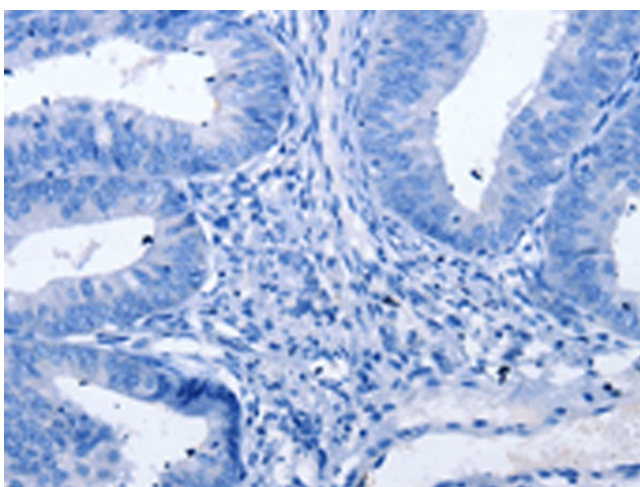
Protein Families: Druggable Genome

Protein Pathways: Alzheimer's disease, Amyotrophic lateral sclerosis (ALS), Apoptosis, Huntington's disease, p53 signaling pathway, Parkinson's disease, Small cell lung cancer

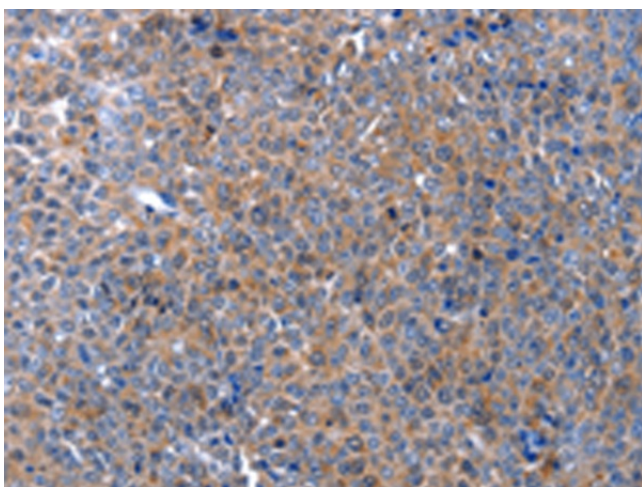
Product images:



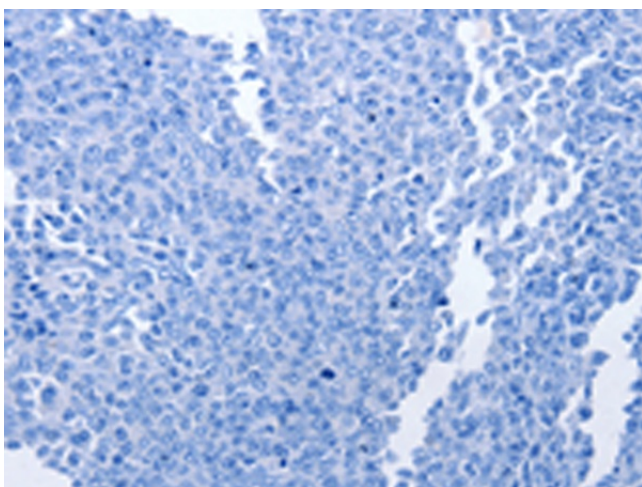
Immunohistochemistry of paraffin-embedded Human cervical cancer tissue using TA321993 (APAF1 Antibody) at dilution 1/25 (Original magnification: $\times 200$)



Immunohistochemistry of paraffin-embedded Human cervical cancer tissue using TA321993 (APAF1 Antibody) at dilution 1/25, treated with synthetic peptide. (Original magnification: $\times 200$)



Immunohistochemistry of paraffin-embedded Human ovarian cancer tissue using TA321993 (APAF1 Antibody) at dilution 1/25 (Original magnification: ×200)



Immunohistochemistry of paraffin-embedded Human ovarian cancer tissue using TA321993 (APAF1 Antibody) at dilution 1/25, treated with synthetic peptide. (Original magnification: ×200)