

Product datasheet for **TA321991**

APAF1 Rabbit Polyclonal Antibody

Product data:

Product Type:	Primary Antibodies
Applications:	IHC, WB
Recommended Dilution:	WB: 500-2000 WB positive control: Hela and A549 cells IHC: 25-100 Positive control: Human thyroid cancer Predicted cell location: Cytoplasm
Reactivity:	Human, Mouse, Rat
Host:	Rabbit
Isotype:	IgG
Clonality:	Polyclonal
Immunogen:	Synthetic peptide corresponding to a region derived from 11-25 amino acids of Human Apoptotic protease-activating factor 1
Formulation:	PBS pH7.3, 0.05% NaN ₃ , 50% glycerol
Concentration:	lot specific
Purification:	Antigen affinity purification
Conjugation:	Unconjugated
Storage:	Store at -20°C as received.
Stability:	Stable for 12 months from date of receipt.
Predicted Protein Size:	38 kDa
Gene Name:	apoptotic peptidase activating factor 1
Database Link:	NP_863659 Entrez Gene 11783 Mouse Entrez Gene 78963 Rat Entrez Gene 317 Human O14727



[View online »](#)

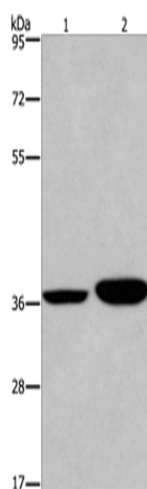
Background: This gene encodes a cytoplasmic protein that initiates apoptosis. This protein contains several copies of the WD-40 domain; a caspase recruitment domain (CARD); and an ATPase domain (NB-ARC). Upon binding cytochrome c and dATP; this protein forms an oligomeric apoptosome. The apoptosome binds and cleaves caspase 9 preproprotein; releasing its mature; activated form. Activated caspase 9 stimulates the subsequent caspase cascade that commits the cell to apoptosis. Alternative splicing results in several transcript variants encoding different isoforms.

Synonyms: APAF-1; CED4

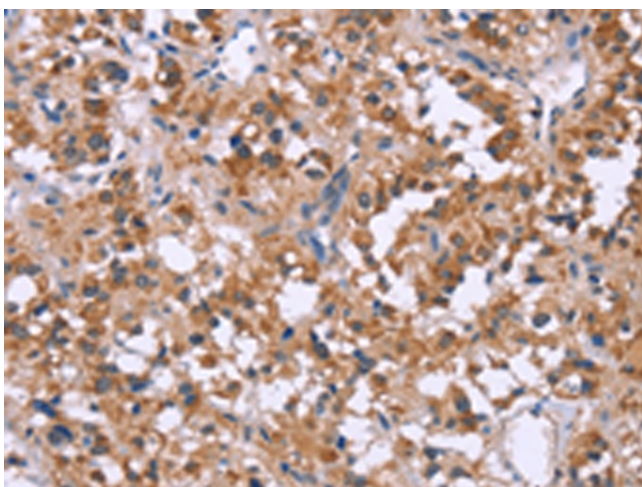
Protein Families: Druggable Genome

Protein Pathways: Alzheimer's disease, Amyotrophic lateral sclerosis (ALS), Apoptosis, Huntington's disease, p53 signaling pathway, Parkinson's disease, Small cell lung cancer

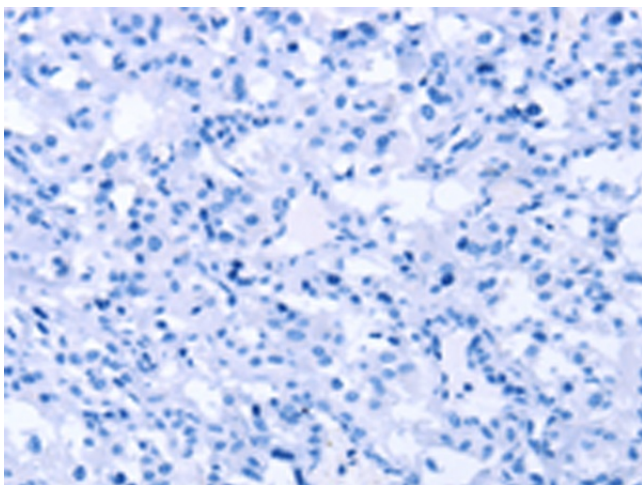
Product images:



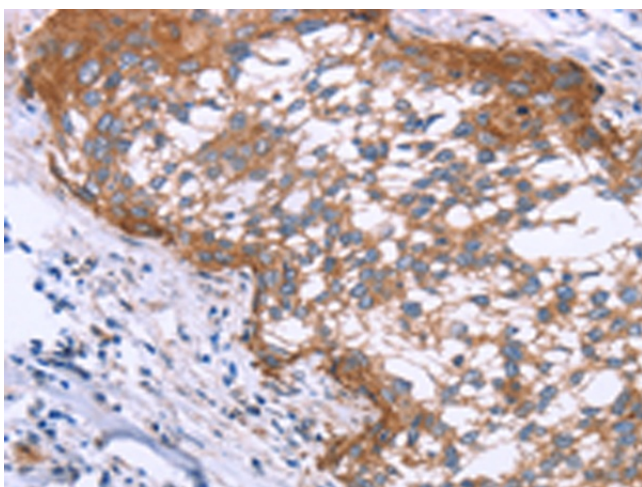
Gel: 6%SDS-PAGE
Lysate: 40 µg
Lane 1-2: HeLa cells
A549 cells
Primary antibody: TA321991 (APAF1 Antibody) at dilution 1/350
Secondary antibody: Goat anti rabbit IgG at 1/8000 dilution
Exposure time: 5 minutes



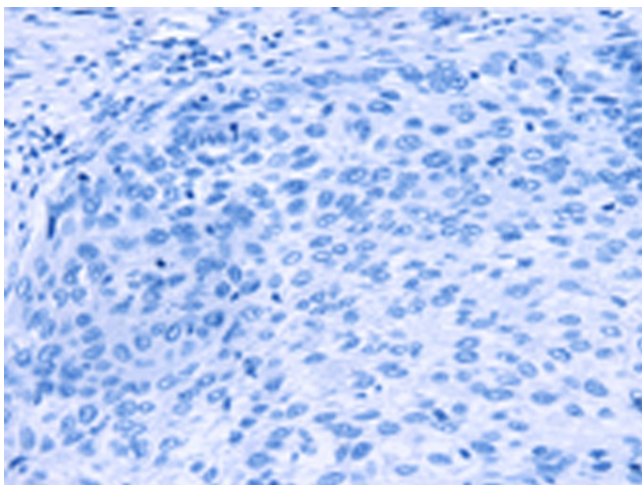
Immunohistochemistry of paraffin-embedded Human thyroid cancer tissue using TA321991 (APAF1 Antibody) at dilution 1/20 (Original magnification: ×200)



Immunohistochemistry of paraffin-embedded Human thyroid cancer tissue using TA321991 (APAF1 Antibody) at dilution 1/20, treated with synthetic peptide. (Original magnification: $\times 200$)



Immunohistochemistry of paraffin-embedded Human cervical cancer tissue using TA321991 (APAF1 Antibody) at dilution 1/20 (Original magnification: $\times 200$)



Immunohistochemistry of paraffin-embedded Human cervical cancer tissue using TA321991 (APAF1 Antibody) at dilution 1/20, treated with synthetic peptide. (Original magnification: $\times 200$)