

## Product datasheet for **TA321988S**

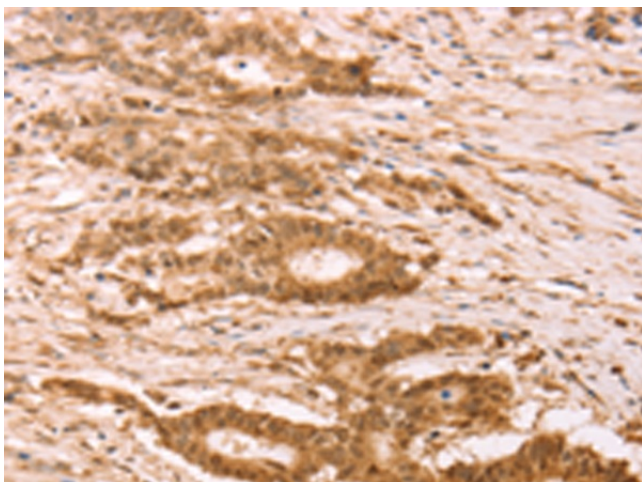
### STRA8 Rabbit Polyclonal Antibody

#### Product data:

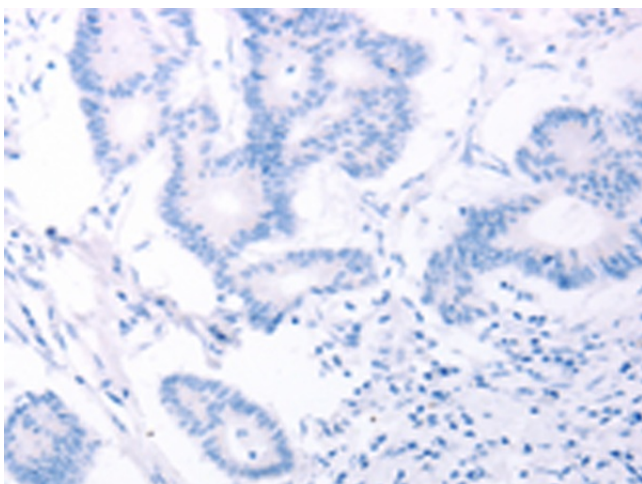
Product Type:	Primary Antibodies
Applications:	IHC
Recommended Dilution:	IHC: 25-100 Positive control: Human colon cancer Predicted cell location: Cytoplasm, Nucleus
Reactivity:	Human
Host:	Rabbit
Isotype:	IgG
Clonality:	Polyclonal
Immunogen:	Synthetic peptide corresponding to a region derived from 314-299 amino acids of human stimulated by retinoic acid 8
Formulation:	PBS pH7.3, 0.05% NaN <sub>3</sub> , 50% glycerol
Concentration:	lot specific
Purification:	Antigen affinity purification
Conjugation:	Unconjugated
Storage:	Store at -20°C as received.
Stability:	Stable for 12 months from date of receipt.
Gene Name:	stimulated by retinoic acid 8
Database Link:	<a href="#">NP_872295</a> <a href="#">Entrez Gene 346673 Human</a> <a href="#">Q7Z7C7</a>
Background:	This gene encodes a retinoic acid-responsive protein. A homologous protein in mouse has been shown to be involved in the regulation of meiotic initiation in both spermatogenesis and oogenesis; though feature differences between the mouse and human proteins suggest that these homologs are not entirely functionally equivalent. It is thought that this gene may play a role in spermatogenesis in humans.
Synonyms:	stimulated by retinoic acid gene 8 homolog (mouse)



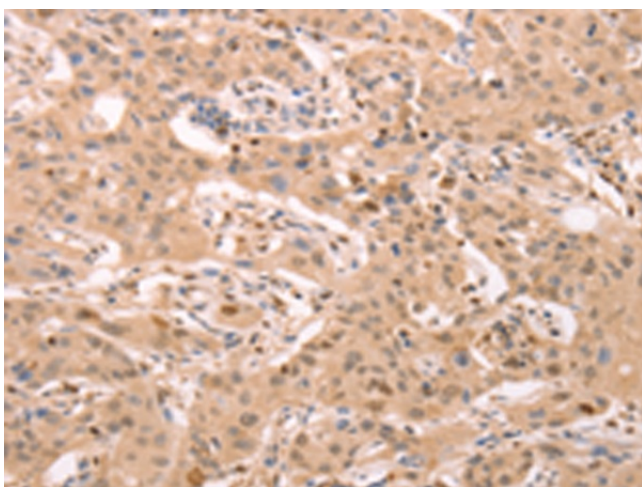
[View online »](#)

**Product images:**

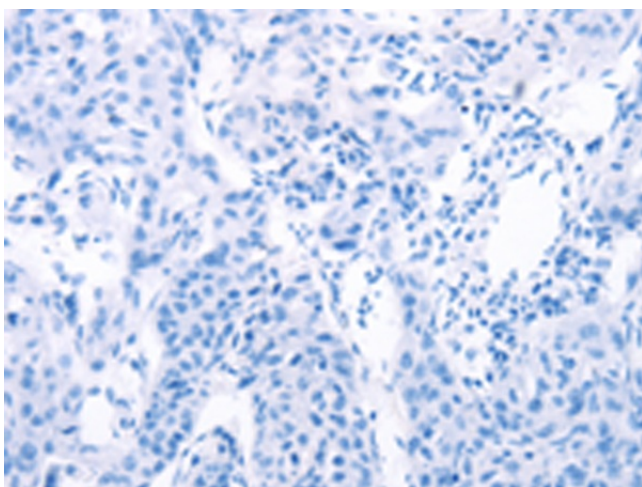
Immunohistochemistry of paraffin-embedded Human colon cancer tissue using [TA321988] (STRA8 Antibody) at dilution 1/25 (Original magnification:  $\times 200$ )



Immunohistochemistry of paraffin-embedded Human colon cancer tissue using [TA321988] (STRA8 Antibody) at dilution 1/25, treated with synthetic peptide. (Original magnification:  $\times 200$ )



Immunohistochemistry of paraffin-embedded Human lung cancer tissue using [TA321988] (STRA8 Antibody) at dilution 1/25 (Original magnification:  $\times 200$ )



Immunohistochemistry of paraffin-embedded Human lung cancer tissue using [TA321988] (STRA8 Antibody) at dilution 1/25, treated with synthetic peptide. (Original magnification:  $\times 200$ )