

Product datasheet for **TA321987S**

LPLUNC3 (BPIFB3) Rabbit Polyclonal Antibody

Product data:

Product Type:	Primary Antibodies
Applications:	IHC, WB
Recommended Dilution:	WB: 1000-5000 WB positive control: Human lung cancer tissue IHC: 100-300 Positive control: Human colon cancer Predicted cell location: Cytoplasm
Reactivity:	Human
Host:	Rabbit
Isotype:	IgG
Clonality:	Polyclonal
Immunogen:	Synthetic peptide corresponding to a region derived from 260-273 amino acids of Human BPI fold containing family B, member 3
Formulation:	PBS pH7.3, 0.05% NaN ₃ , 50% glycerol
Purification:	Antigen affinity purification
Conjugation:	Unconjugated
Storage:	Store at -20°C as received.
Stability:	Stable for 12 months from date of receipt.
Predicted Protein Size:	50 kDa
Gene Name:	BPI fold containing family B member 3
Database Link:	NP_872599 Entrez Gene 359710 Human P59826
Background:	BPI fold-containing family B member 3 may have the capacity to recognize and bind specific classes of odorants. May act as a carrier molecule; transporting odorants across the mucus layer to access receptor sites. May serve as a primary defense mechanism by recognizing and removing potentially harmful odorants or pathogenic microorganisms from the mucosa or clearing excess odorant from mucus to enable new odorant stimuli to be received.

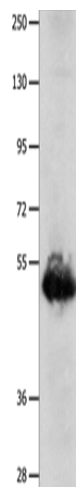


[View online »](#)

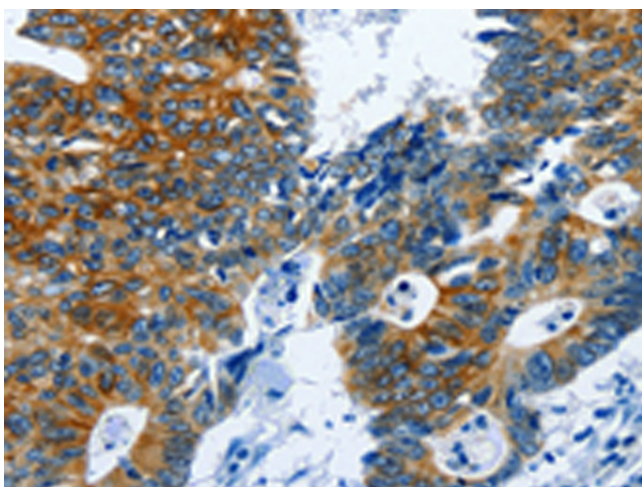
Synonyms: C20orf185; LPLUNC3; RYA3

Protein Families: Druggable Genome, Secreted Protein

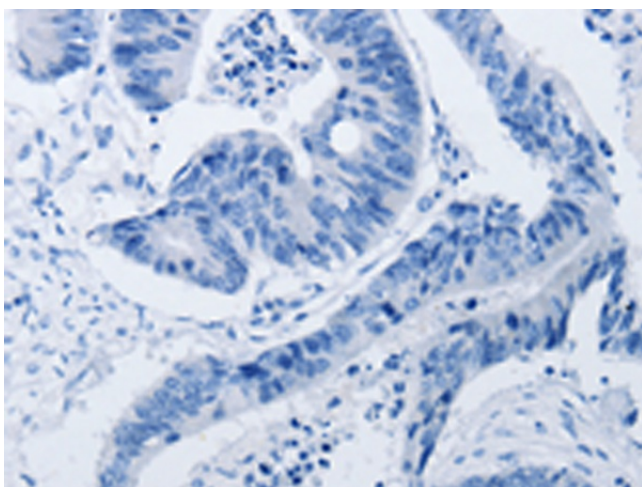
Product images:



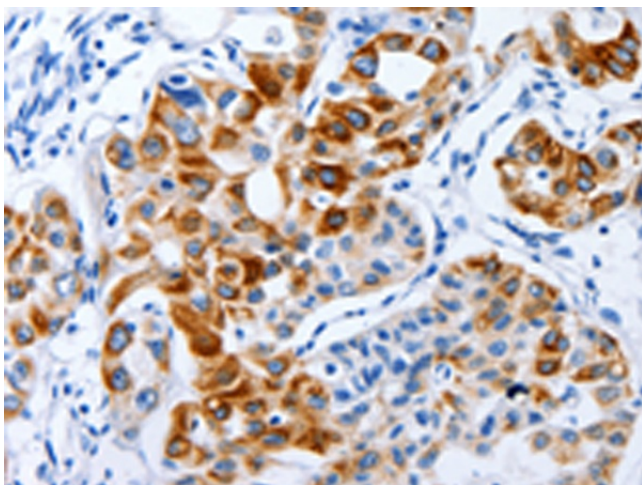
Gel: 8%SDS-PAGE
Lysate: 40 µg
Lane: Human lung cancer tissue
Primary antibody: [TA321987] (BPIFB3 Antibody) at dilution 1/1600
Secondary antibody: Goat anti rabbit IgG at 1/8000 dilution
Exposure time: 30 seconds



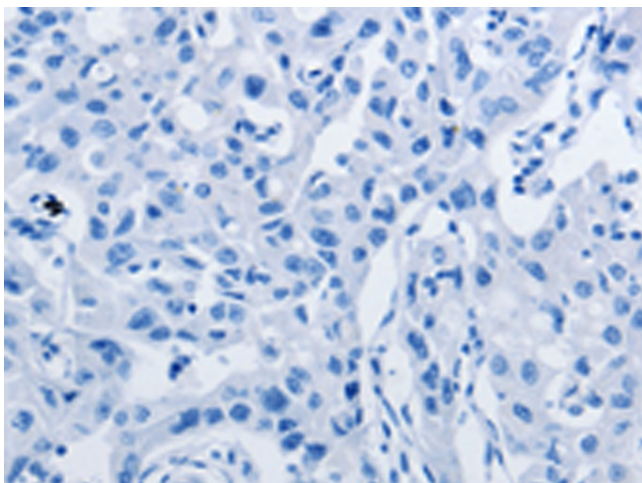
Immunohistochemistry of paraffin-embedded Human colon cancer tissue using [TA321987] (BPIFB3 Antibody) at dilution 1/120 (Original magnification: ×200)



Immunohistochemistry of paraffin-embedded Human colon cancer tissue using [TA321987] (BPIFB3 Antibody) at dilution 1/120, treated with synthetic peptide. (Original magnification: ×200)



Immunohistochemistry of paraffin-embedded Human lung cancer tissue using [TA321987] (BPIFB3 Antibody) at dilution 1/120 (Original magnification: ×200)



Immunohistochemistry of paraffin-embedded Human lung cancer tissue using [TA321987] (BPIFB3 Antibody) at dilution 1/120, treated with synthetic peptide. (Original magnification: ×200)