

## Product datasheet for **TA321987**

### LPLUNC3 (BPIFB3) Rabbit Polyclonal Antibody

#### Product data:

Product Type:	Primary Antibodies
Applications:	IHC, WB
Recommended Dilution:	WB: 1000-5000 WB positive control: Human lung cancer tissue IHC: 100-300 Positive control: Human colon cancer Predicted cell location: Cytoplasm
Reactivity:	Human
Host:	Rabbit
Isotype:	IgG
Clonality:	Polyclonal
Immunogen:	Synthetic peptide corresponding to a region derived from 260-273 amino acids of Human BPI fold containing family B, member 3
Formulation:	PBS pH7.3, 0.05% NaN <sub>3</sub> , 50% glycerol
Concentration:	lot specific
Purification:	Antigen affinity purification
Conjugation:	Unconjugated
Storage:	Store at -20°C as received.
Stability:	Stable for 12 months from date of receipt.
Predicted Protein Size:	50 kDa
Gene Name:	BPI fold containing family B member 3
Database Link:	<a href="#">NP_872599</a> <a href="#">Entrez Gene 359710 Human P59826</a>



[View online »](#)

**Background:**

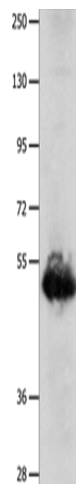
BPI fold-containing family B member 3 may have the capacity to recognize and bind specific classes of odorants. May act as a carrier molecule; transporting odorants across the mucus layer to access receptor sites. May serve as a primary defense mechanism by recognizing and removing potentially harmful odorants or pathogenic microorganisms from the mucosa or clearing excess odorant from mucus to enable new odorant stimuli to be received.

**Synonyms:**

C20orf185; LPLUNC3; RYA3

**Protein Families:**

Druggable Genome, Secreted Protein

**Product images:**

Gel: 8%SDS-PAGE

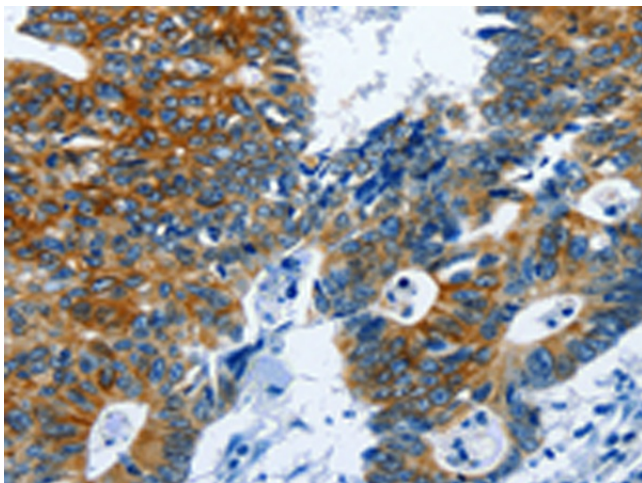
Lysate: 40 µg

Lane: Human lung cancer tissue

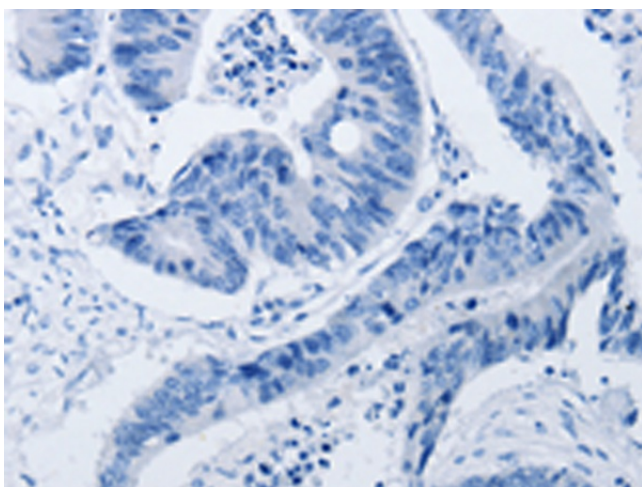
Primary antibody: TA321987 (BPIFB3 Antibody) at dilution 1/1600

Secondary antibody: Goat anti rabbit IgG at 1/8000 dilution

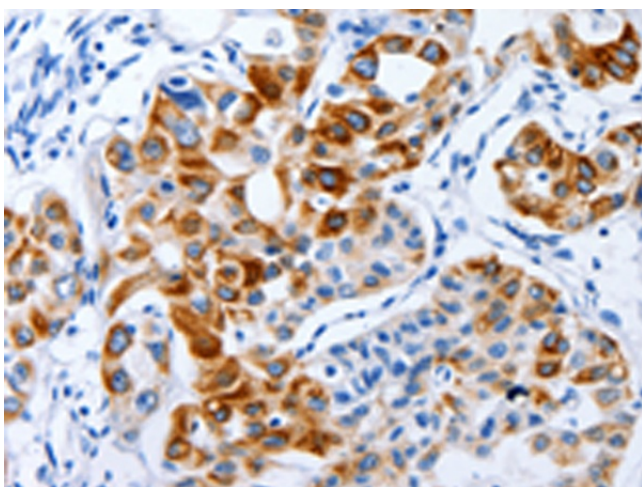
Exposure time: 30 seconds



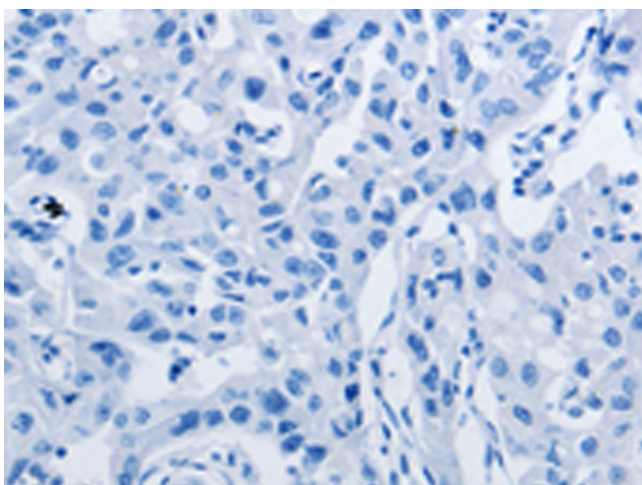
Immunohistochemistry of paraffin-embedded Human colon cancer tissue using TA321987 (BPIFB3 Antibody) at dilution 1/120 (Original magnification: ×200)



Immunohistochemistry of paraffin-embedded Human colon cancer tissue using TA321987 (BPIFB3 Antibody) at dilution 1/120, treated with synthetic peptide. (Original magnification: x200)



Immunohistochemistry of paraffin-embedded Human lung cancer tissue using TA321987 (BPIFB3 Antibody) at dilution 1/120 (Original magnification: x200)



Immunohistochemistry of paraffin-embedded Human lung cancer tissue using TA321987 (BPIFB3 Antibody) at dilution 1/120, treated with synthetic peptide. (Original magnification: x200)