

## Product datasheet for **TA321982S**

### NAIF1 Rabbit Polyclonal Antibody

#### Product data:

Product Type:	Primary Antibodies
Applications:	IHC, WB
Recommended Dilution:	WB: 1000-5000 WB positive control: C2C12 cell lysate IHC: 100-200 Positive control: Human esophagus cancer Predicted cell location: Nucleus
Reactivity:	Human, Mouse
Host:	Rabbit
Isotype:	IgG
Clonality:	Polyclonal
Immunogen:	Full length fusion protein
Formulation:	PBS pH7.3, 0.05% NaN <sub>3</sub> , 50% glycerol
Purification:	Antigen affinity purification
Conjugation:	Unconjugated
Storage:	Store at -20°C as received.
Stability:	Stable for 12 months from date of receipt.
Predicted Protein Size:	18 kDa
Gene Name:	nuclear apoptosis inducing factor 1
Database Link:	<a href="#">NP_931045</a> <a href="#">Entrez Gene 71254 Mouse</a> <a href="#">Entrez Gene 203245 Human</a> <a href="#">Q69YI7</a>



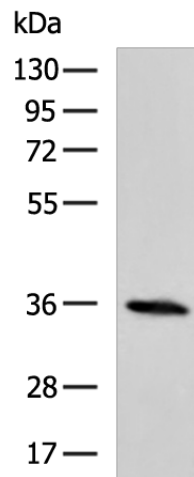
[View online »](#)

**Background:**

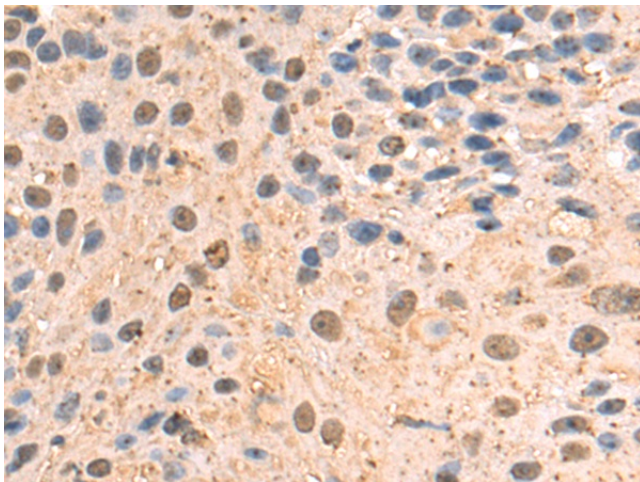
Human NAIF1 is located on chromosome 9q34.11 and encodes 327 amino acids with a homeodomain-like region and two nuclear localization signals at its N-terminal region. NAIF1 is conserved across diverse species; including human; mouse; crab-eating macaque; dog; chicken and frog; and shares no obvious homology to any known genes or proteins. NAIF1 was predominantly localized in the nucleus. Overexpression of NAIF1 inhibited cell growth and induced apoptosis. Furthermore; NAIF1 transfection caused both decreases in mitochondrial membrane potential and caspase-3 activation. In summary; NAIF1 is a nuclear protein that induces apoptosis when overexpressed.

**Synonyms:**

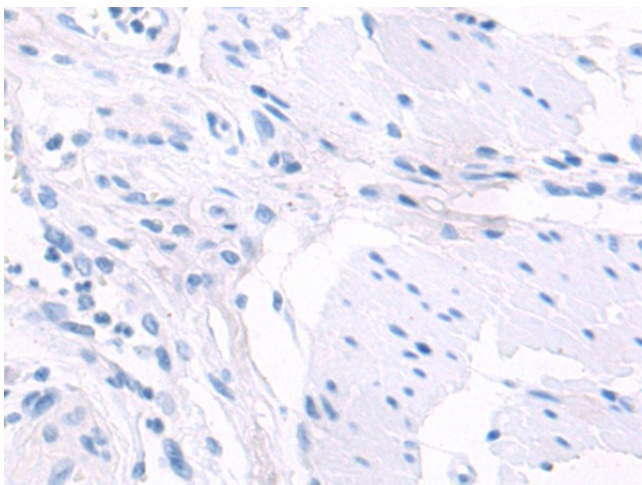
bA379C10.2; C9orf90

**Product images:**

Gel: 8%SDS-PAGE  
Lysate: 40 µg  
Lane: C2C12 cell lysate  
Primary antibody: [TA321982] (NAIF1 Antibody) at dilution 1/1000  
Secondary antibody: Goat anti rabbit IgG at 1/5000 dilution  
Exposure time: 10 seconds



Immunohistochemistry of paraffin-embedded Human esophagus cancer tissue using [TA321982] (NAIF1 Antibody) at dilution 1/100 (Original magnification: ×200)



Immunohistochemistry of paraffin-embedded Human esophagus cancer tissue using [TA321982] (NAIF1 Antibody) at dilution 1/100, treated with fusion protein. (Original magnification: ×200)