

## Product datasheet for **TA321981**

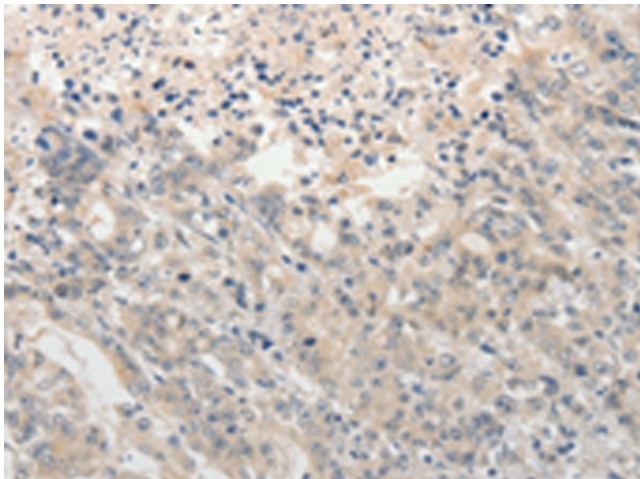
### ADAMTS6 Rabbit Polyclonal Antibody

#### Product data:

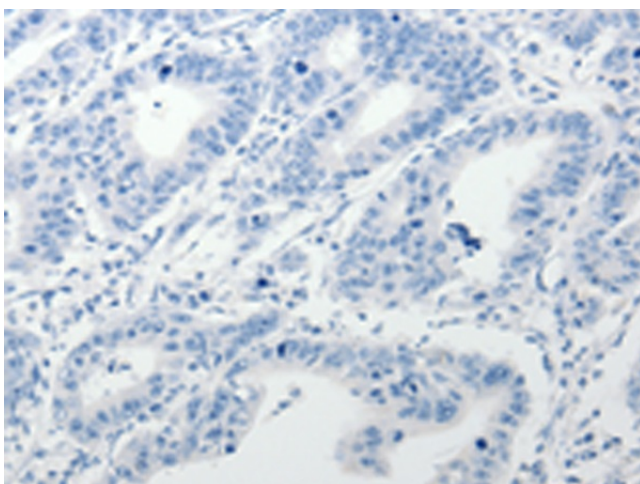
Product Type:	Primary Antibodies
Applications:	IHC
Recommended Dilution:	IHC: 15-50 Positive control: Human gastric cancer Predicted cell location: Secreted, ExtraCellular space, ExtraCellular matrix
Reactivity:	Human
Host:	Rabbit
Isotype:	IgG
Clonality:	Polyclonal
Immunogen:	Synthetic peptide corresponding to a region derived from 21-34 amino acids of human ADAM metalloproteinase with thrombospondin type 1 motif, 6
Formulation:	PBS pH7.3, 0.05% NaN <sub>3</sub> , 50% glycerol
Concentration:	lot specific
Purification:	Antigen affinity purification
Conjugation:	Unconjugated
Storage:	Store at -20°C as received.
Stability:	Stable for 12 months from date of receipt.
Gene Name:	ADAM metalloproteinase with thrombospondin type 1 motif 6
Database Link:	<a href="#">NP_922932</a> <a href="#">Entrez Gene 11174 Human</a> <a href="#">Q9UKP5</a>
Background:	This gene encodes a member of the ADAMTS (a disintegrin and metalloproteinase with thrombospondin motifs) protein family. Members of the family share several distinct protein modules; including a propeptide region; a metalloproteinase domain; a disintegrin-like domain; and a thrombospondin type 1 (TS) motif. Individual members of this family differ in the number of C-terminal TS motifs; and some have unique C-terminal domains.
Synonyms:	ADAM-TS 6; ADAM-TS6; ADAMTS-6
Protein Families:	Protease



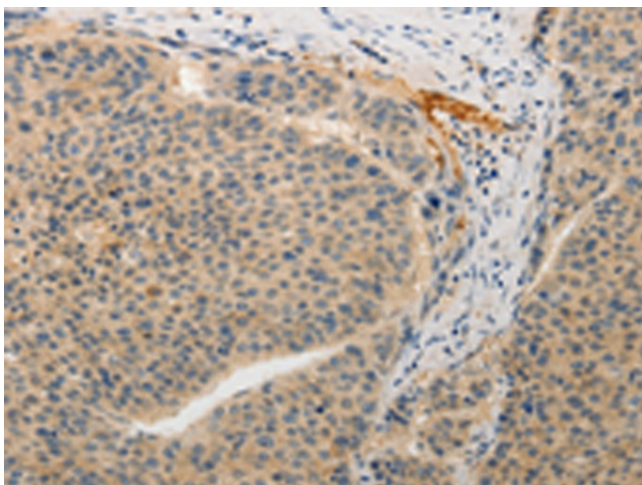
[View online »](#)

**Product images:**

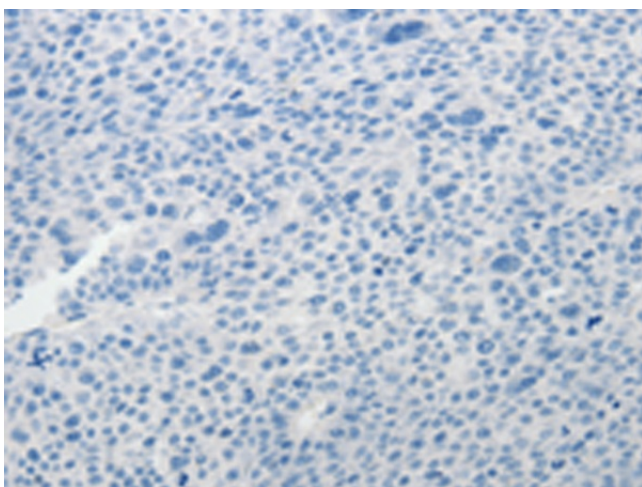
Immunohistochemistry of paraffin-embedded Human gastric cancer tissue using TA321981 (ADAMTS6 Antibody) at dilution 1/15 (Original magnification: ×200)



Immunohistochemistry of paraffin-embedded Human gastric cancer tissue using TA321981 (ADAMTS6 Antibody) at dilution 1/15, treated with synthetic peptide. (Original magnification: ×200)



Immunohistochemistry of paraffin-embedded Human liver cancer tissue using TA321981 (ADAMTS6 Antibody) at dilution 1/15 (Original magnification:  $\times 200$ )



Immunohistochemistry of paraffin-embedded Human liver cancer tissue using TA321981 (ADAMTS6 Antibody) at dilution 1/15, treated with synthetic peptide. (Original magnification:  $\times 200$ )