

Product datasheet for **TA321980**

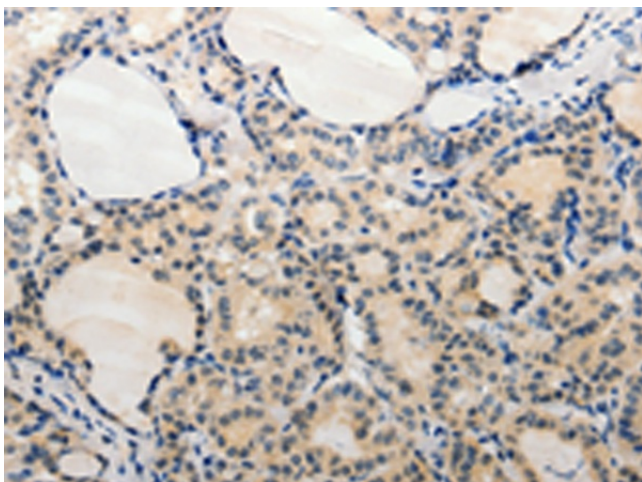
ADAMTS6 Rabbit Polyclonal Antibody

Product data:

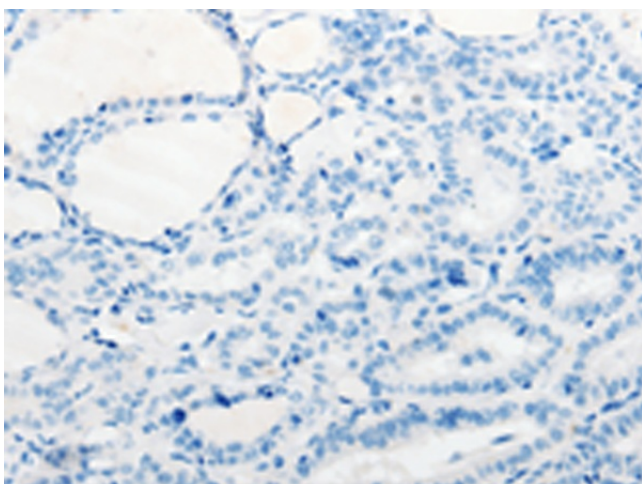
| | |
|-----------------------|--|
| Product Type: | Primary Antibodies |
| Applications: | IHC |
| Recommended Dilution: | IHC: 15-50 Positive control: Human thyroid cancer Predicted cell location: Secreted, ExtraCellular space, ExtraCellular matrix |
| Reactivity: | Human |
| Host: | Rabbit |
| Isotype: | IgG |
| Clonality: | Polyclonal |
| Immunogen: | Synthetic peptide corresponding to a region derived from 21-34 amino acids of human ADAM metalloproteinase with thrombospondin type 1 motif, 6 |
| Formulation: | PBS pH7.3, 0.05% NaN ₃ , 50% glycerol |
| Concentration: | lot specific |
| Purification: | Antigen affinity purification |
| Conjugation: | Unconjugated |
| Storage: | Store at -20°C as received. |
| Stability: | Stable for 12 months from date of receipt. |
| Gene Name: | ADAM metalloproteinase with thrombospondin type 1 motif 6 |
| Database Link: | NP_922932 Entrez Gene 11174 Human Q9UKP5 |
| Background: | This gene encodes a member of the ADAMTS (a disintegrin and metalloproteinase with thrombospondin motifs) protein family. Members of the family share several distinct protein modules; including a propeptide region; a metalloproteinase domain; a disintegrin-like domain; and a thrombospondin type 1 (TS) motif. Individual members of this family differ in the number of C-terminal TS motifs; and some have unique C-terminal domains. |
| Synonyms: | ADAM-TS 6; ADAM-TS6; ADAMTS-6 |
| Protein Families: | Protease |



[View online »](#)

Product images:

Immunohistochemistry of paraffin-embedded Human thyroid cancer tissue using TA321980 (ADAMTS6 Antibody) at dilution 1/20 (Original magnification: $\times 200$)



Immunohistochemistry of paraffin-embedded Human thyroid cancer tissue using TA321980 (ADAMTS6 Antibody) at dilution 1/20, treated with synthetic peptide. (Original magnification: $\times 200$)