

Product datasheet for **TA321978S**

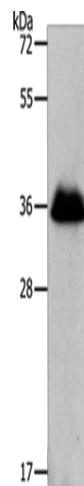
RNF126 Rabbit Polyclonal Antibody

Product data:

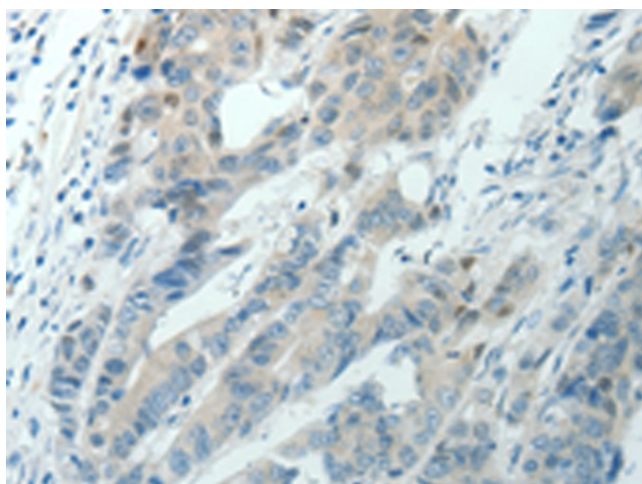
Product Type:	Primary Antibodies
Applications:	IHC, WB
Recommended Dilution:	WB: 1000-5000 WB positive control: NIH/3T3 cells IHC: 25-100 Positive control: Human colon cancer Predicted cell location: Cytoplasm
Reactivity:	Human, Mouse, Rat
Host:	Rabbit
Isotype:	IgG
Clonality:	Polyclonal
Immunogen:	Synthetic peptide corresponding to a region derived from 106-119 amino acids of Human ring finger protein 126
Formulation:	PBS pH7.3, 0.05% NaN ₃ , 50% glycerol
Purification:	Antigen affinity purification
Conjugation:	Unconjugated
Storage:	Store at -20°C as received.
Stability:	Stable for 12 months from date of receipt.
Predicted Protein Size:	36 kDa
Gene Name:	ring finger protein 126
Database Link:	NP_919442 Entrez Gene 70294 Mouse Entrez Gene 314613 Rat Entrez Gene 55658 Human Q9BV68
Background:	RNF126 contains a RING type zinc finger domain; a motif known to be involved in protein-protein and protein-DNA interactions. The specific function of this protein is unknown. There are two named isoforms.
Synonyms:	FLJ20552; MGC1022; MGC14317
Protein Families:	Druggable Genome



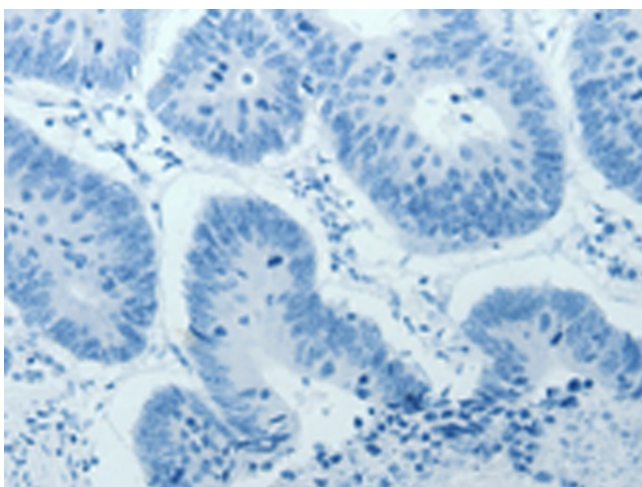
[View online »](#)

Product images:

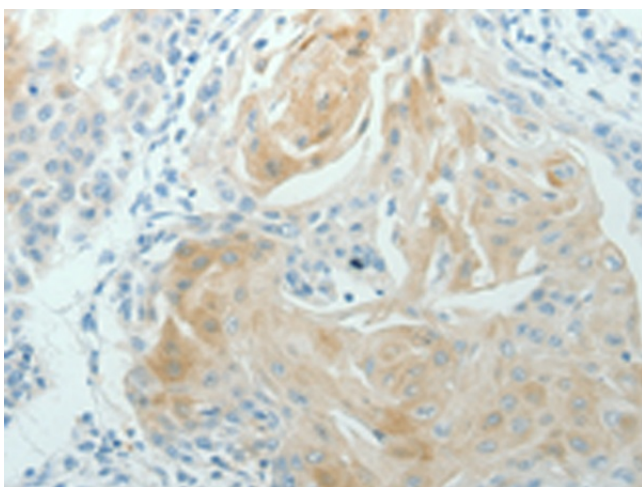
Gel: 12%SDS-PAGE
Lysate: 30 μ g
Lane: NIH/3T3 cells
Primary antibody: [TA321978] (RNF126 Antibody) at dilution 1/1050
Secondary antibody: Goat anti rabbit IgG at 1/8000 dilution
Exposure time: 2 seconds



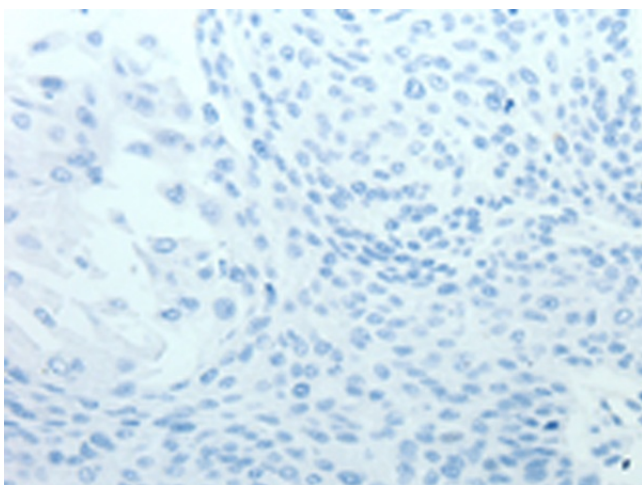
Immunohistochemistry of paraffin-embedded Human colon cancer tissue using [TA321978] (RNF126 Antibody) at dilution 1/70 (Original magnification: \times 200)



Immunohistochemistry of paraffin-embedded Human colon cancer tissue using [TA321978] (RNF126 Antibody) at dilution 1/70, treated with synthetic peptide. (Original magnification: $\times 200$)



Immunohistochemistry of paraffin-embedded Human cervical cancer tissue using [TA321978] (RNF126 Antibody) at dilution 1/70 (Original magnification: $\times 200$)



Immunohistochemistry of paraffin-embedded Human cervical cancer tissue using [TA321978] (RNF126 Antibody) at dilution 1/70, treated with synthetic peptide. (Original magnification: $\times 200$)