

Product datasheet for **TA321975S**

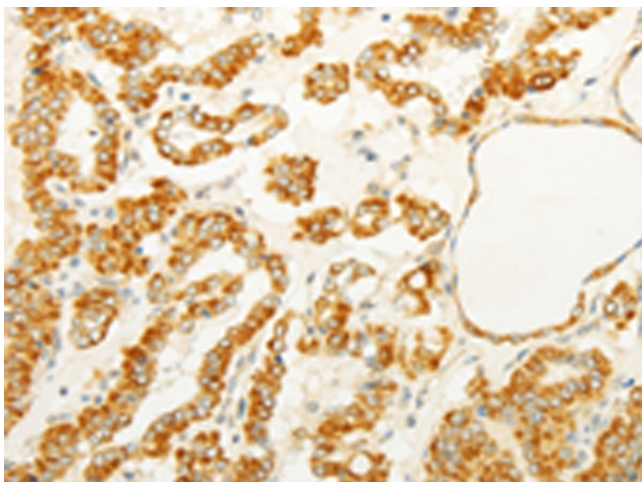
FOXR2 Rabbit Polyclonal Antibody

Product data:

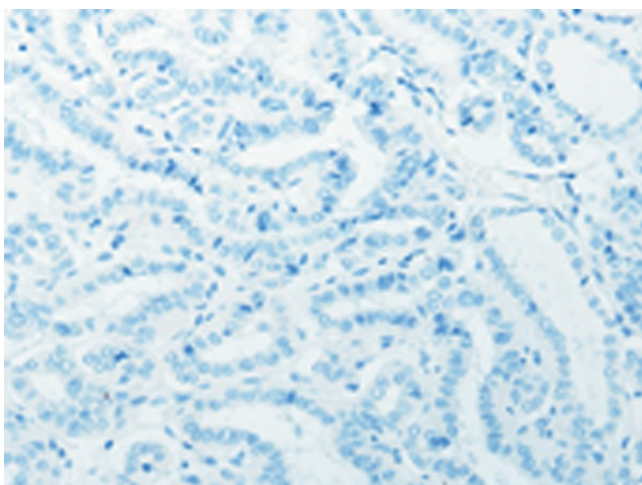
Product Type:	Primary Antibodies
Applications:	IHC
Recommended Dilution:	IHC: 25-100 Positive control: Human thyroid cancer Predicted cell location: Cytoplasm
Reactivity:	Human
Host:	Rabbit
Isotype:	IgG
Clonality:	Polyclonal
Immunogen:	Full length fusion protein
Formulation:	PBS pH7.3, 0.05% NaN ₃ , 50% glycerol
Purification:	Antigen affinity purification
Conjugation:	Unconjugated
Storage:	Store at -20°C as received.
Stability:	Stable for 12 months from date of receipt.
Gene Name:	forkhead box R2
Database Link:	NP_940853 Entrez Gene 139628 Human Q6P1Q5
Background:	Forkhead-box (FOX) transcription factors are implicated in carcinogenesis through gene amplification; retroviral integration; or chromosomal translocation. It expressed in breast cancer cell lines and primary cancer. The Subcellular location is in nucleus.
Synonyms:	FOXN6
Protein Families:	Transcription Factors



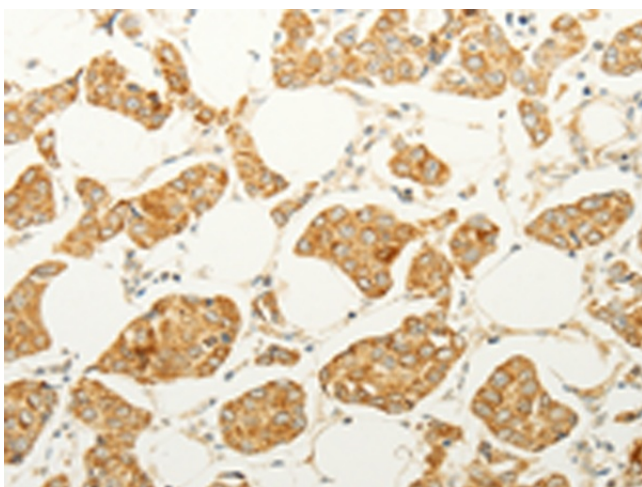
[View online »](#)

Product images:

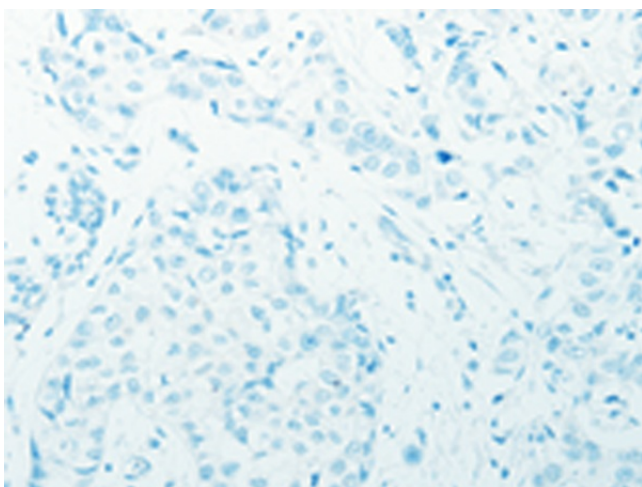
Immunohistochemistry of paraffin-embedded Human thyroid cancer tissue using [TA321975] (FOXR2 Antibody) at dilution 1/25 (Original magnification: $\times 200$)



Immunohistochemistry of paraffin-embedded Human thyroid cancer tissue using [TA321975] (FOXR2 Antibody) at dilution 1/25, treated with fusion protein. (Original magnification: $\times 200$)



Immunohistochemistry of paraffin-embedded Human breast cancer tissue using [TA321975] (FOXR2 Antibody) at dilution 1/25 (Original magnification: $\times 200$)



Immunohistochemistry of paraffin-embedded Human breast cancer tissue using [TA321975] (FOXR2 Antibody) at dilution 1/25, treated with fusion protein. (Original magnification: $\times 200$)