

## Product datasheet for **TA321974S**

### FOXR2 Rabbit Polyclonal Antibody

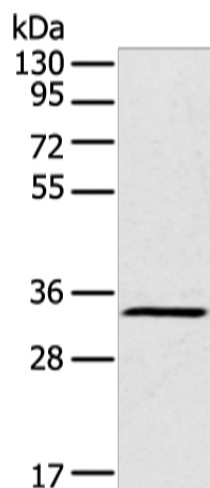
#### Product data:

Product Type:	Primary Antibodies
Applications:	IHC, WB
Recommended Dilution:	WB: 200-1000 WB positive control: Raji cell IHC: 25-100 Positive control: Human lung cancer Predicted cell location: Cytoplasm
Reactivity:	Human
Host:	Rabbit
Isotype:	IgG
Clonality:	Polyclonal
Immunogen:	Full length fusion protein
Formulation:	PBS pH7.3, 0.05% NaN <sub>3</sub> , 50% glycerol
Purification:	Antigen affinity purification
Conjugation:	Unconjugated
Storage:	Store at -20°C as received.
Stability:	Stable for 12 months from date of receipt.
Gene Name:	forkhead box R2
Database Link:	<a href="#">NP_940853</a> <a href="#">Entrez Gene 139628 Human</a> <a href="#">Q6P1Q5</a>
Background:	Forkhead-box (FOX) transcription factors are implicated in carcinogenesis through gene amplification; retroviral integration; or chromosomal translocation. It expressed in breast cancer cell lines and primary cancer. The Subcellular location is in nucleus.
Synonyms:	FOXN6
Protein Families:	Transcription Factors

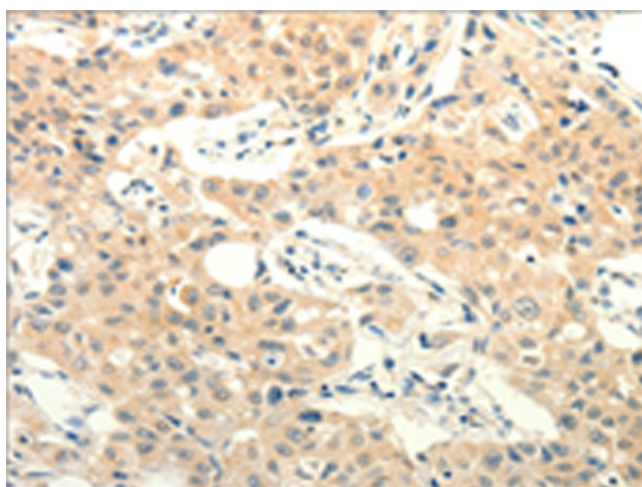


[View online »](#)

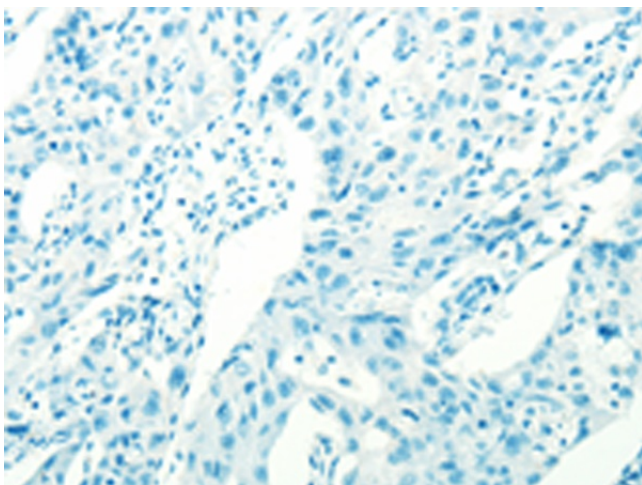
## Product images:



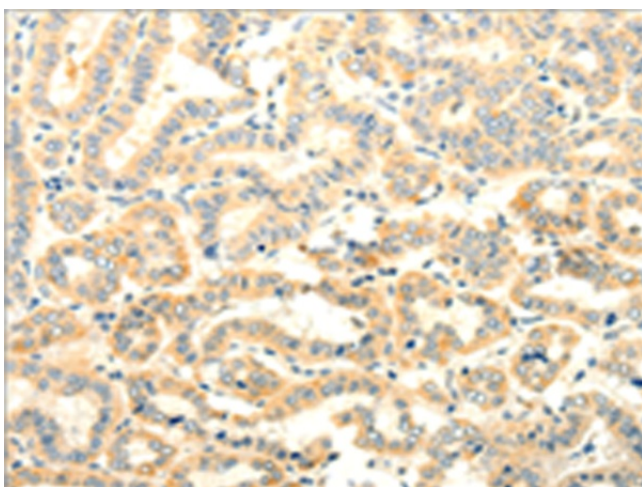
Gel: 8%SDS-PAGE  
Lysate: 40  $\mu$ g  
Lane: Raji cell  
Primary antibody: [TA321974] (FOXR2 Antibody)  
at dilution 1/200  
Secondary antibody: Goat anti rabbit IgG at  
1/8000 dilution  
Exposure time: 2 minutes



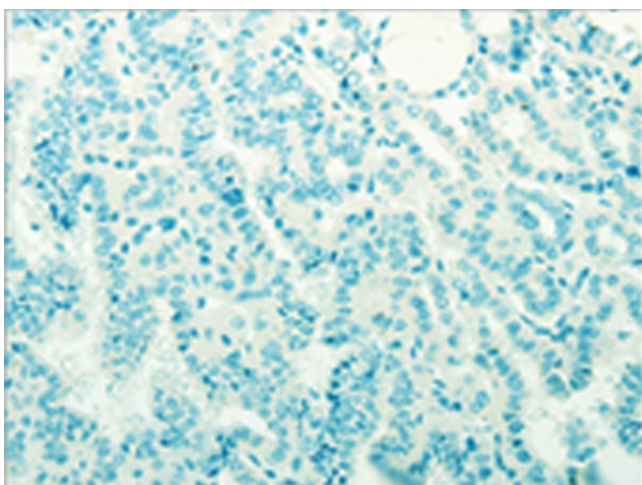
Immunohistochemistry of paraffin-embedded  
Human lung cancer tissue using [TA321974]  
(FOXR2 Antibody) at dilution 1/25 (Original  
magnification:  $\times$ 200)



Immunohistochemistry of paraffin-embedded Human lung cancer tissue using [TA321974] (FOXR2 Antibody) at dilution 1/25, treated with fusion protein. (Original magnification:  $\times 200$ )



Immunohistochemistry of paraffin-embedded Human thyroid cancer tissue using [TA321974] (FOXR2 Antibody) at dilution 1/25 (Original magnification:  $\times 200$ )



Immunohistochemistry of paraffin-embedded Human thyroid cancer tissue using [TA321974] (FOXR2 Antibody) at dilution 1/25, treated with fusion protein. (Original magnification:  $\times 200$ )