

Product datasheet for **TA321973S**

FATP1 (SLC27A1) Rabbit Polyclonal Antibody

Product data:

| | |
|------------------------------|---|
| Product Type: | Primary Antibodies |
| Applications: | IHC |
| Recommended Dilution: | IHC: 50-200 Positive control: Human esophagus cancer Predicted cell location: Cytoplasm |
| Reactivity: | Human |
| Host: | Rabbit |
| Isotype: | IgG |
| Clonality: | Polyclonal |
| Immunogen: | Synthetic peptide corresponding to a region derived from 630-646 amino acids of human solute carrier family 27 (fatty acid transporter), member 1 |
| Formulation: | PBS pH7.3, 0.05% NaN ₃ , 50% glycerol |
| Purification: | Antigen affinity purification |
| Conjugation: | Unconjugated |
| Storage: | Store at -20°C as received. |
| Stability: | Stable for 12 months from date of receipt. |
| Gene Name: | solute carrier family 27 member 1 |
| Database Link: | NP_940982 Entrez Gene 376497 Human Q6PCB7 |
| Background: | The protein involved in translocation of long-chain fatty acids (LFCA) across the plasma membrane. The LFCA import appears to be hormone-regulated in a tissue-specific manner. In adipocytes; but not myocytes; insulin induces a rapid translocation of FATP1 from intracellular compartments to the plasma membrane; paralleled by increased LFCA uptake. Plays a pivotal role in regulating available LFCA substrates from exogenous sources in tissues undergoing high levels of beta-oxidation or triglyceride synthesis. May be involved in regulation of cholesterol metabolism. Has acyl-CoA ligase activity for long-chain and very-long-chain fatty acids. Highest levels of expression are detected in muscle and adipose tissue small; intermediate levels in small intestine; and barely detectable in liver. |



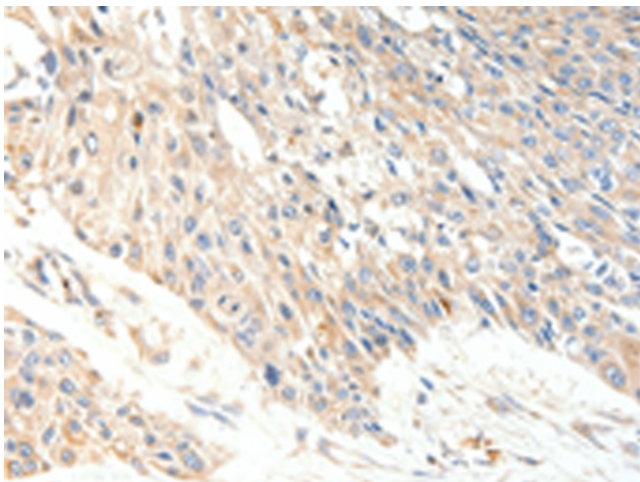
[View online »](#)

Synonyms: ACSVL5; FATP; FATP-1; FATP1

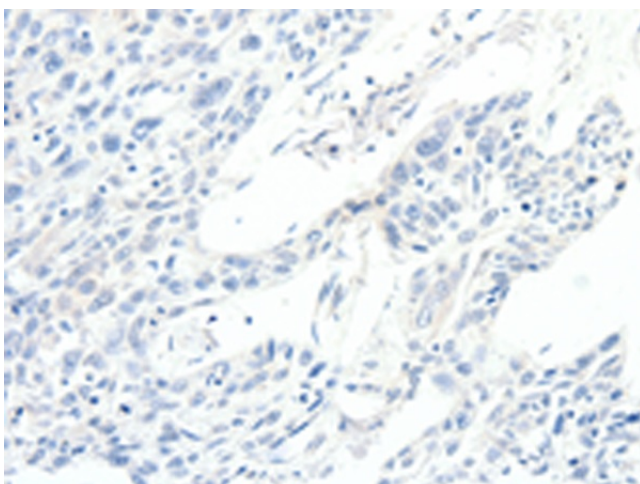
Protein Families: Transmembrane

Protein Pathways: PPAR signaling pathway

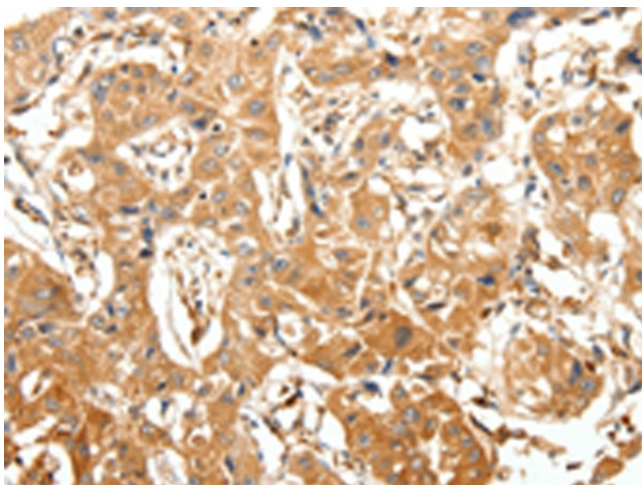
Product images:



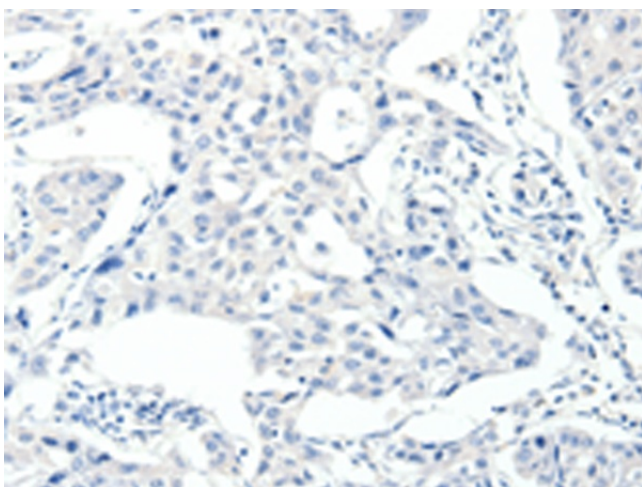
Immunohistochemistry of paraffin-embedded Human esophagus cancer tissue using [TA321973] (SLC27A1 Antibody) at dilution 1/40 (Original magnification: $\times 200$)



Immunohistochemistry of paraffin-embedded Human esophagus cancer tissue using [TA321973] (SLC27A1 Antibody) at dilution 1/40, treated with synthetic peptide. (Original magnification: $\times 200$)



Immunohistochemistry of paraffin-embedded Human lung cancer tissue using [TA321973] (SLC27A1 Antibody) at dilution 1/40 (Original magnification: $\times 200$)



Immunohistochemistry of paraffin-embedded Human lung cancer tissue using [TA321973] (SLC27A1 Antibody) at dilution 1/40, treated with synthetic peptide. (Original magnification: $\times 200$)