

## Product datasheet for **TA321972S**

### **FATP1 (SLC27A1) Rabbit Polyclonal Antibody**

#### **Product data:**

<b>Product Type:</b>	Primary Antibodies
<b>Applications:</b>	IHC
<b>Recommended Dilution:</b>	IHC: 50-200 Positive control: Human liver cancer Predicted cell location: Cytoplasm
<b>Reactivity:</b>	Human
<b>Host:</b>	Rabbit
<b>Isotype:</b>	IgG
<b>Clonality:</b>	Polyclonal
<b>Immunogen:</b>	Synthetic peptide corresponding to a region derived from 630-646 amino acids of human solute carrier family 27 (fatty acid transporter), member 1
<b>Formulation:</b>	PBS pH7.3, 0.05% NaN <sub>3</sub> , 50% glycerol
<b>Purification:</b>	Antigen affinity purification
<b>Conjugation:</b>	Unconjugated
<b>Storage:</b>	Store at -20°C as received.
<b>Stability:</b>	Stable for 12 months from date of receipt.
<b>Gene Name:</b>	solute carrier family 27 member 1
<b>Database Link:</b>	<a href="#">NP_940982</a> <a href="#">Entrez Gene 376497 Human</a> <a href="#">Q6PCB7</a>
<b>Background:</b>	The protein involved in translocation of long-chain fatty acids (LFCA) across the plasma membrane. The LFCA import appears to be hormone-regulated in a tissue-specific manner. In adipocytes; but not myocytes; insulin induces a rapid translocation of FATP1 from intracellular compartments to the plasma membrane; paralleled by increased LFCA uptake. Plays a pivotal role in regulating available LFCA substrates from exogenous sources in tissues undergoing high levels of beta-oxidation or triglyceride synthesis. May be involved in regulation of cholesterol metabolism. Has acyl-CoA ligase activity for long-chain and very-long-chain fatty acids. Highest levels of expression are detected in muscle and adipose tissue small; intermediate levels in small intestine; and barely detectable in liver.



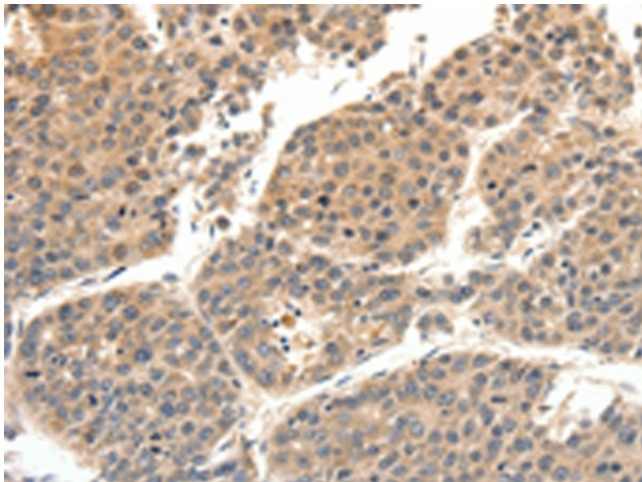
[View online »](#)

**Synonyms:** ACSVL5; FATP; FATP-1; FATP1

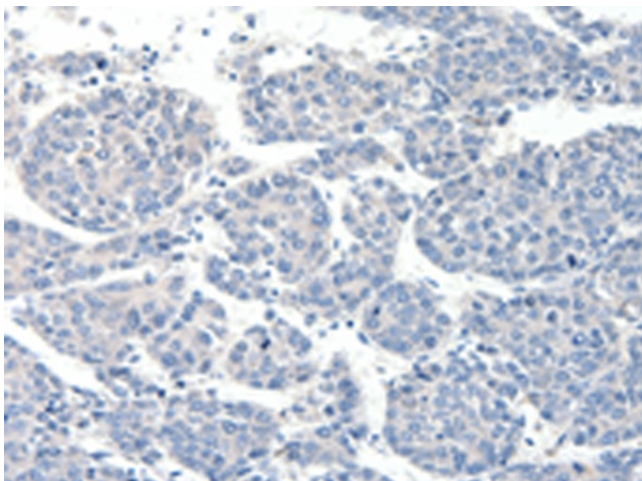
**Protein Families:** Transmembrane

**Protein Pathways:** PPAR signaling pathway

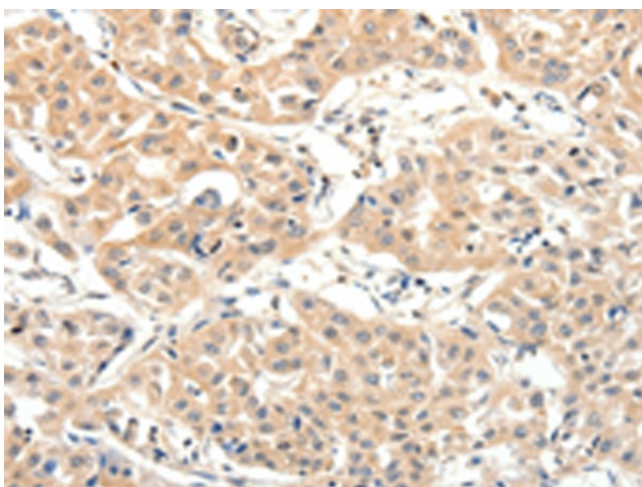
**Product images:**



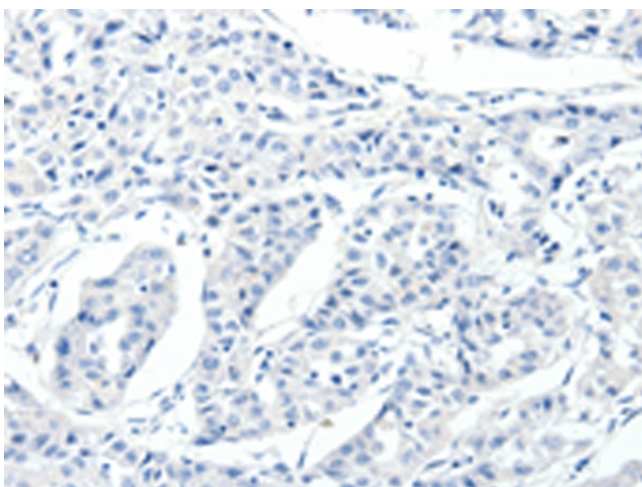
Immunohistochemistry of paraffin-embedded Human liver cancer tissue using [TA321972] (SLC27A1 Antibody) at dilution 1/40 (Original magnification: ×200)



Immunohistochemistry of paraffin-embedded Human liver cancer tissue using [TA321972] (SLC27A1 Antibody) at dilution 1/40, treated with synthetic peptide. (Original magnification: ×200)



Immunohistochemistry of paraffin-embedded Human lung cancer tissue using [TA321972] (SLC27A1 Antibody) at dilution 1/40 (Original magnification:  $\times 200$ )



Immunohistochemistry of paraffin-embedded Human lung cancer tissue using [TA321972] (SLC27A1 Antibody) at dilution 1/40, treated with synthetic peptide. (Original magnification:  $\times 200$ )