

Product datasheet for **TA321972**

FATP1 (SLC27A1) Rabbit Polyclonal Antibody

Product data:

Product Type:	Primary Antibodies
Applications:	IHC
Recommended Dilution:	IHC: 50-200 Positive control: Human liver cancer Predicted cell location: Cytoplasm
Reactivity:	Human
Host:	Rabbit
Isotype:	IgG
Clonality:	Polyclonal
Immunogen:	Synthetic peptide corresponding to a region derived from 630-646 amino acids of human solute carrier family 27 (fatty acid transporter), member 1
Formulation:	PBS pH7.3, 0.05% NaN ₃ , 50% glycerol
Concentration:	lot specific
Purification:	Antigen affinity purification
Conjugation:	Unconjugated
Storage:	Store at -20°C as received.
Stability:	Stable for 12 months from date of receipt.
Gene Name:	solute carrier family 27 member 1
Database Link:	NP_940982 Entrez Gene 376497 Human Q6PCB7



[View online »](#)

Background:

The protein involved in translocation of long-chain fatty acids (LFCA) across the plasma membrane. The LFCA import appears to be hormone-regulated in a tissue-specific manner. In adipocytes; but not myocytes; insulin induces a rapid translocation of FATP1 from intracellular compartments to the plasma membrane; paralleled by increased LFCA uptake. Plays a pivotal role in regulating available LFCA substrates from exogenous sources in tissues undergoing high levels of beta-oxidation or triglyceride synthesis. May be involved in regulation of cholesterol metabolism. Has acyl-CoA ligase activity for long-chain and very-long-chain fatty acids. Highest levels of expression are detected in muscle and adipose tissue small; intermediate levels in small intestine; and barely detectable in liver.

Synonyms:

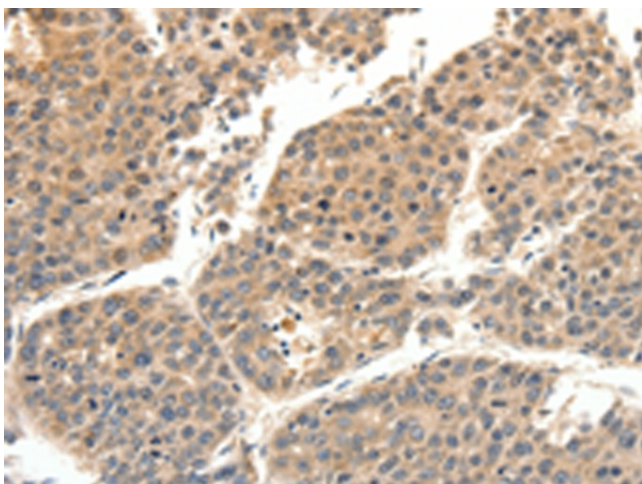
ACSVL5; FATP; FATP-1; FATP1

Protein Families:

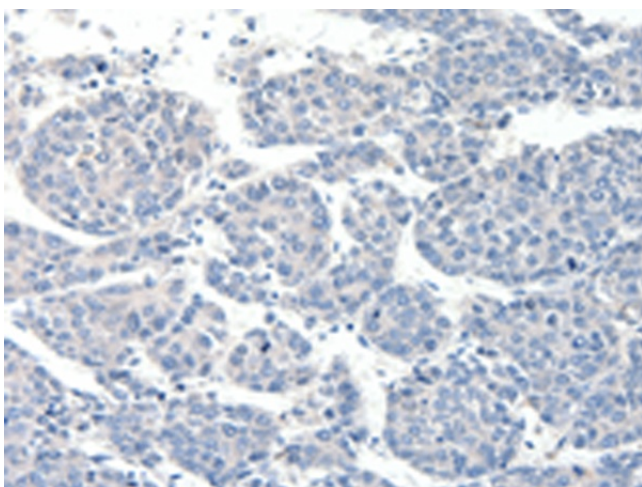
Transmembrane

Protein Pathways:

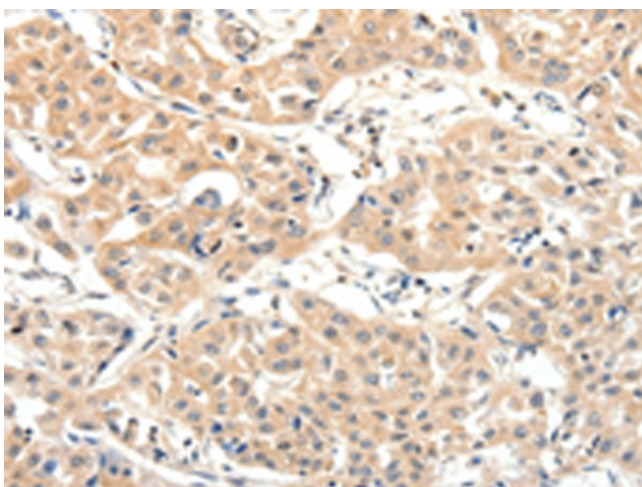
PPAR signaling pathway

Product images:

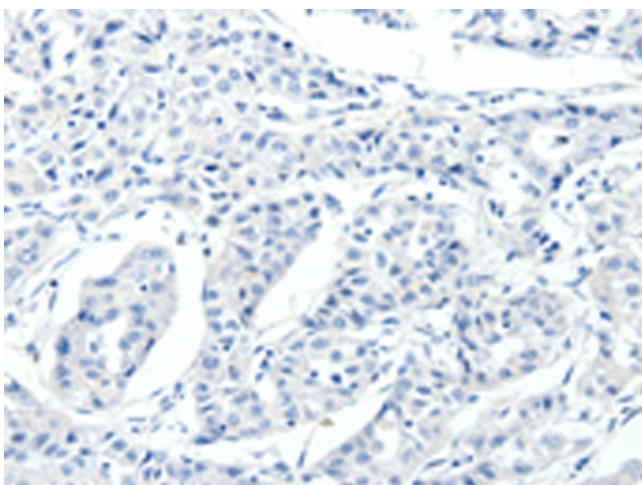
Immunohistochemistry of paraffin-embedded Human liver cancer tissue using TA321972 (SLC27A1 Antibody) at dilution 1/40 (Original magnification: $\times 200$)



Immunohistochemistry of paraffin-embedded Human liver cancer tissue using TA321972 (SLC27A1 Antibody) at dilution 1/40, treated with synthetic peptide. (Original magnification: ×200)



Immunohistochemistry of paraffin-embedded Human lung cancer tissue using TA321972 (SLC27A1 Antibody) at dilution 1/40 (Original magnification: ×200)



Immunohistochemistry of paraffin-embedded Human lung cancer tissue using TA321972 (SLC27A1 Antibody) at dilution 1/40, treated with synthetic peptide. (Original magnification: ×200)