

## Product datasheet for **TA321970**

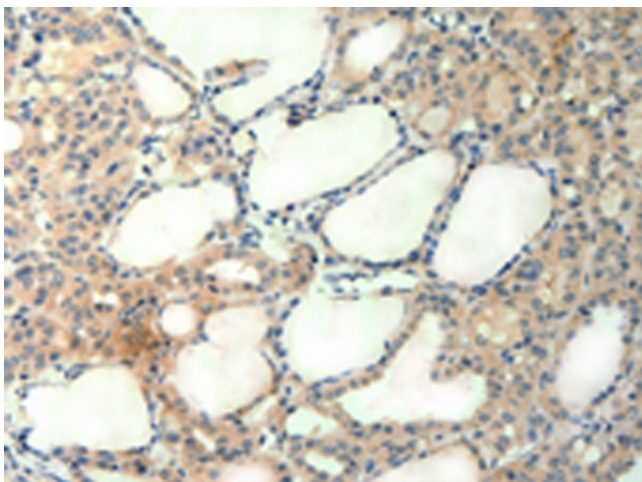
### Agrin (AGRN) Rabbit Polyclonal Antibody

#### Product data:

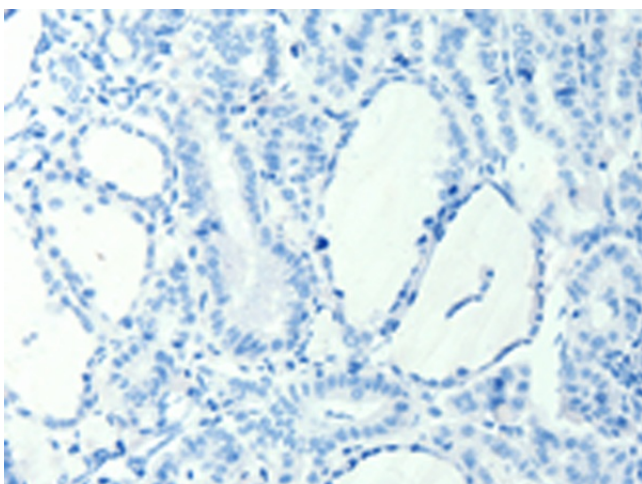
Product Type:	Primary Antibodies
Applications:	IHC
Recommended Dilution:	IHC: 50-200 Positive control: Human thyroid cancer Predicted cell location: Cytoplasm
Reactivity:	Human
Host:	Rabbit
Isotype:	IgG
Clonality:	Polyclonal
Immunogen:	Synthetic peptide corresponding to a region derived from 74-84 amino acids of human agrin
Formulation:	PBS pH7.3, 0.05% NaN <sub>3</sub> , 50% glycerol
Concentration:	lot specific
Purification:	Antigen affinity purification
Conjugation:	Unconjugated
Storage:	Store at -20°C as received.
Stability:	Stable for 12 months from date of receipt.
Gene Name:	agrin
Database Link:	<a href="#">NP_940978</a> <a href="#">Entrez Gene 375790 Human</a> <a href="#">O00468</a>
Background:	This gene encodes one of several proteins that are critical in the development of the neuromuscular junction (NMJ); as identified in mouse knock-out studies. The encoded protein contains several laminin G; Kazal type serine protease inhibitor; and epidermal growth factor domains. Additional post-translational modifications occur to add glycosaminoglycans and disulfide bonds. In one family with congenital myasthenic syndrome affecting limb-girdle muscles; a mutation in this gene was found.
Synonyms:	CMS8; CMSPPD
Protein Pathways:	ECM-receptor interaction



[View online »](#)

**Product images:**

Immunohistochemistry of paraffin-embedded Human thyroid cancer tissue using TA321970 (AGRN Antibody) at dilution 1/50 (Original magnification:  $\times 200$ )



Immunohistochemistry of paraffin-embedded Human thyroid cancer tissue using TA321970 (AGRN Antibody) at dilution 1/50, treated with synthetic peptide. (Original magnification:  $\times 200$ )