

Product datasheet for **TA321965S**

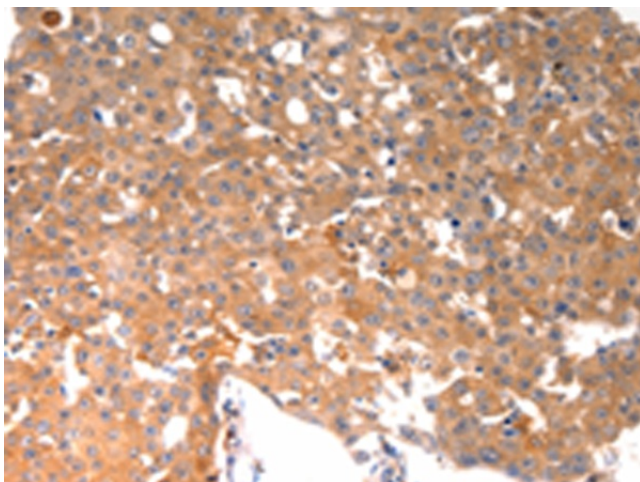
Osteocalcin (BGLAP) Rabbit Polyclonal Antibody

Product data:

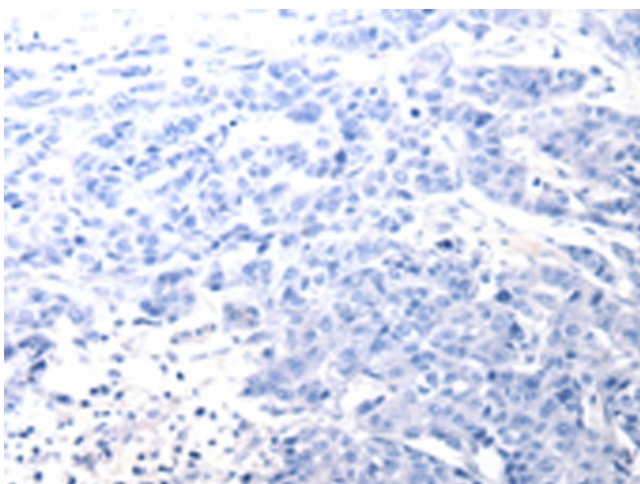
Product Type:	Primary Antibodies
Applications:	IHC
Recommended Dilution:	IHC: 50-200 Positive control: Human breast cancer Predicted cell location: Cytoplasm
Reactivity:	Human
Host:	Rabbit
Isotype:	IgG
Clonality:	Polyclonal
Immunogen:	Synthetic peptide corresponding to a region derived from 80-100 amino acids of human bone gamma-carboxyglutamate (gla) protein
Formulation:	PBS pH7.3, 0.05% NaN ₃ , 50% glycerol
Concentration:	lot specific
Purification:	Antigen affinity purification
Conjugation:	Unconjugated
Storage:	Store at -20°C as received.
Stability:	Stable for 12 months from date of receipt.
Gene Name:	bone gamma-carboxyglutamate protein
Database Link:	NP_954642 Entrez Gene 632 Human P02818
Background:	This gene belongs to the osteocalcin/matrix Gla protein family. The protein is a part of the bone protein. It binds strongly to apatite and calcium. BGLAP obtain peak expression at the day of 21 during osteogenesis.
Synonyms:	BGP; OC; OCN
Protein Families:	ES Cell Differentiation/IPS, Secreted Protein



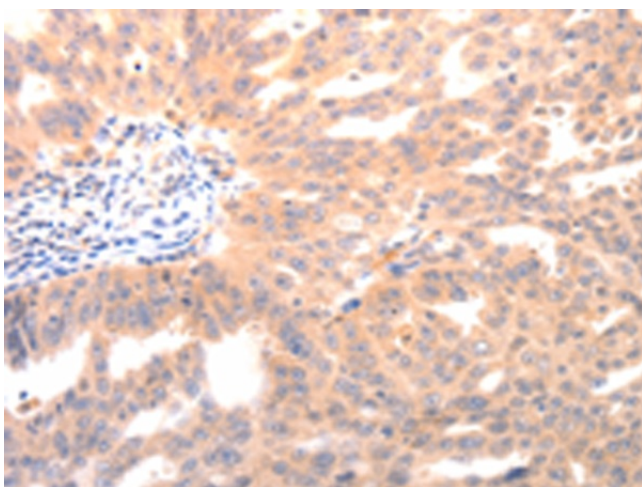
[View online »](#)

Product images:

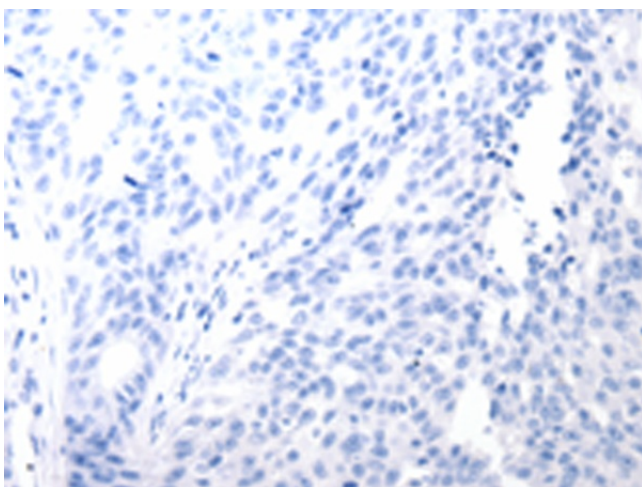
Immunohistochemistry of paraffin-embedded Human breast cancer tissue using [TA321965] (BGLAP Antibody) at dilution 1/40 (Original magnification: ×200)



Immunohistochemistry of paraffin-embedded Human breast cancer tissue using [TA321965] (BGLAP Antibody) at dilution 1/40, treated with synthetic peptide. (Original magnification: ×200)



Immunohistochemistry of paraffin-embedded Human ovarian cancer tissue using [TA321965] (BGLAP Antibody) at dilution 1/40 (Original magnification: $\times 200$)



Immunohistochemistry of paraffin-embedded Human ovarian cancer tissue using [TA321965] (BGLAP Antibody) at dilution 1/40, treated with synthetic peptide. (Original magnification: $\times 200$)