

Product datasheet for **TA321963S**

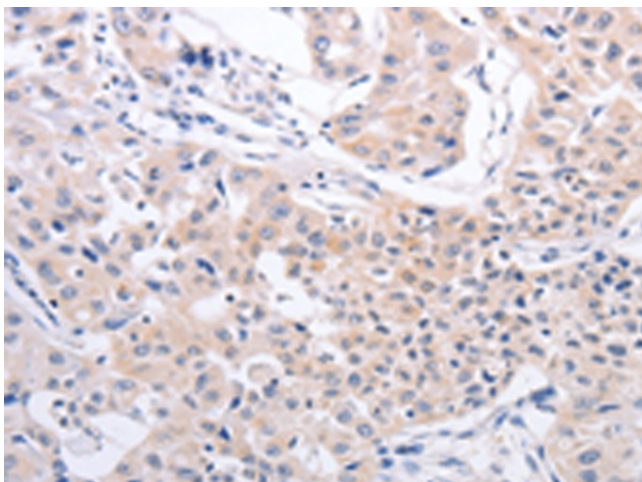
Profilin 4 (PFN4) Rabbit Polyclonal Antibody

Product data:

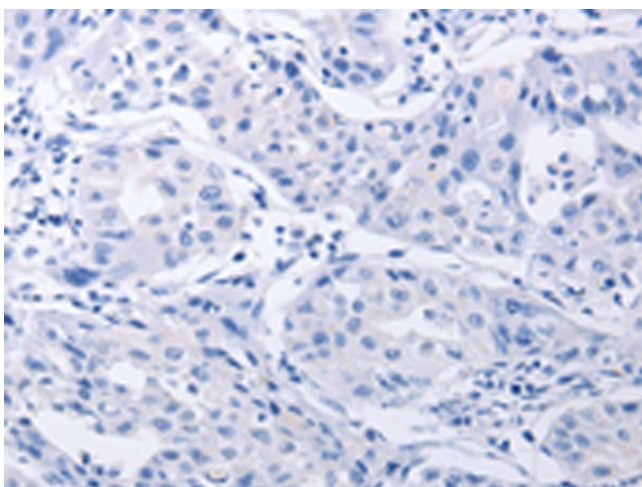
Product Type:	Primary Antibodies
Applications:	IHC
Recommended Dilution:	IHC: 25-100 Positive control: Human lung cancer Predicted cell location: Cytoplasm
Reactivity:	Human, Mouse, Rat
Host:	Rabbit
Isotype:	IgG
Clonality:	Polyclonal
Immunogen:	Full length fusion protein
Formulation:	PBS pH7.3, 0.05% NaN ₃ , 50% glycerol
Purification:	Antigen affinity purification
Conjugation:	Unconjugated
Storage:	Store at -20°C as received.
Stability:	Stable for 12 months from date of receipt.
Gene Name:	profilin family member 4
Database Link:	NP_955378 Entrez Gene 382562 Mouse Entrez Gene 494222 Rat Entrez Gene 375189 Human Q8NHR9
Background:	This gene belongs to the profilin family. It binds to actin and affects the structure of the cytoskeleton. Mostly expression in testes; pituitary gland; midbrain; bone marrow; vulva.
Synonyms:	member 4; profilin family
Protein Pathways:	Regulation of actin cytoskeleton



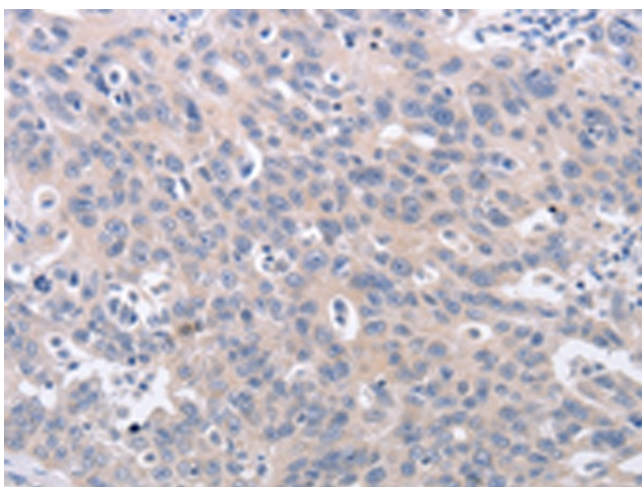
[View online »](#)

Product images:

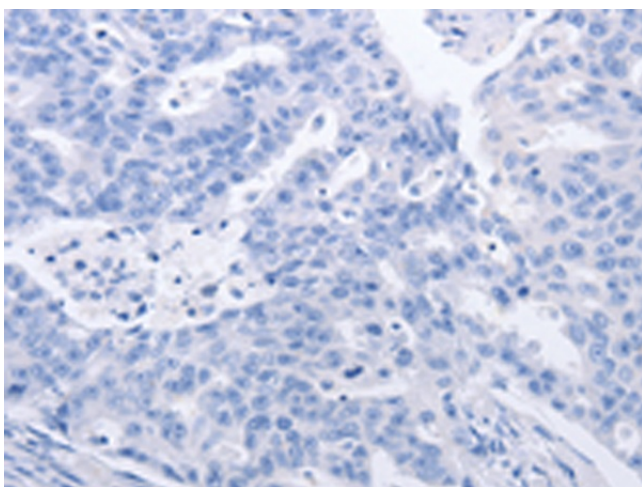
Immunohistochemistry of paraffin-embedded Human lung cancer tissue using [TA321963] (PFN4 Antibody) at dilution 1/20 (Original magnification: $\times 200$)



Immunohistochemistry of paraffin-embedded Human lung cancer tissue using [TA321963] (PFN4 Antibody) at dilution 1/20, treated with fusion protein. (Original magnification: $\times 200$)



Immunohistochemistry of paraffin-embedded Human ovarian cancer tissue using [TA321963] (PFN4 Antibody) at dilution 1/20 (Original magnification: $\times 200$)



Immunohistochemistry of paraffin-embedded Human ovarian cancer tissue using [TA321963] (PFN4 Antibody) at dilution 1/20, treated with fusion protein. (Original magnification: $\times 200$)