

## Product datasheet for **TA321960**

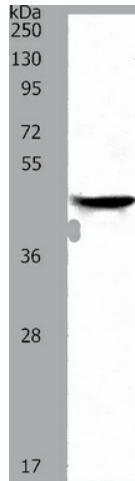
### **NDRG2 Rabbit Polyclonal Antibody**

#### **Product data:**

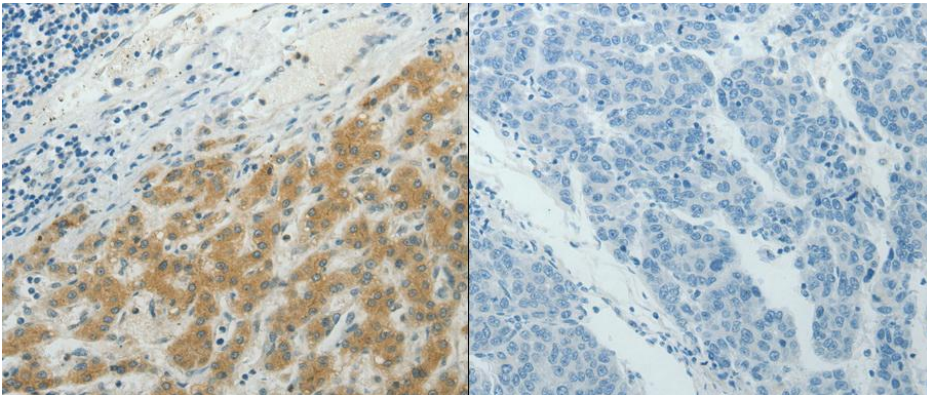
Product Type:	Primary Antibodies
Applications:	IHC, WB
Recommended Dilution:	ELISA: 1:1000-5000, WB: 1:500-2000, IHC: 1:25-100
Reactivity:	Human, Mouse, Rat
Host:	Rabbit
Isotype:	IgG
Clonality:	Polyclonal
Immunogen:	Synthetic peptide corresponding to a region derived from 25-39 amino acids of Human NDRG family member 2
Formulation:	PBS pH7.3, 0.05% NaN <sub>3</sub> , 50% glycerol
Concentration:	lot specific
Purification:	Antigen affinity purification
Conjugation:	Unconjugated
Storage:	Store at -20°C as received.
Stability:	Stable for 12 months from date of receipt.
Predicted Protein Size:	41 kDa
Gene Name:	NDRG family member 2
Database Link:	<a href="#">NP_963293</a> <a href="#">Entrez Gene 29811 Mouse</a> <a href="#">Entrez Gene 171114 Rat</a> <a href="#">Entrez Gene 57447 Human</a> <a href="#">Q9UN36</a>
Background:	This gene is a member of the N-myc downregulated gene family which belongs to the alpha/beta hydrolase superfamily. The protein encoded by this gene is a cytoplasmic protein that may play a role in neurite outgrowth. This gene may be involved in glioblastoma carcinogenesis. Several alternatively spliced transcript variants of this gene have been described; but the full-length nature of some of these variants has not been determined.
Synonyms:	SYLD



[View online »](#)

**Product images:**

Predicted band size: 41 kDa. Positive control: Human brain malignant glioma tissue lysate. Recommended dilution: 1/500-2000. (Gel: 10%SDS-PAGE Lysate: 40 ug per lane Primary antibody: 1/950 dilution Secondary antibody: Goat anti Rabbit IgG - H&L (HRP) at 1/10000 dilution Exposure time: 1 minute)



Predicted cell location: Cytoplasm. Positive control: Human liver cancer tissue. Recommended dilution: 1/25-100 The image on the left is immunohistochemistry of paraffin-embedded human liver cancer tissue using NDRG2 antibody at dilution 1/50, on the right is treated with the synthetic peptide. (Original magnification:x200)