

Product datasheet for **TA321959**

POLR1C Rabbit Polyclonal Antibody

Product data:

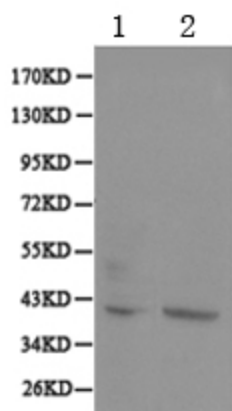
Product Type:	Primary Antibodies
Applications:	IHC, WB
Recommended Dilution:	WB: 1:500-2000
Reactivity:	Human, Mouse, Rat
Host:	Rabbit
Isotype:	IgG
Clonality:	Polyclonal
Immunogen:	Fusion protein corresponding to N terminal 200 amino acids of human polymerase (RNA) I polypeptide C, 30kDa
Formulation:	PBS pH7.3, 0.05% NaN ₃ , 50% glycerol
Concentration:	lot specific
Purification:	Antigen affinity purification
Conjugation:	Unconjugated
Storage:	Store at -20°C as received.
Stability:	Stable for 12 months from date of receipt.
Predicted Protein Size:	39 kDa
Gene Name:	polymerase (RNA) I subunit C
Database Link:	NP_976035 Entrez Gene 20016 Mouse Entrez Gene 301246 Rat Entrez Gene 9533 Human Q15160
Background:	DNA-dependent RNA polymerase catalyzes the transcription of DNA into RNA using the four ribonucleoside triphosphates as substrates. Common component of RNA polymerases I and III which synthesize ribosomal RNA precursors and small RNAs, such as 5S rRNA and tRNAs, respectively. RPAC1 is part of the Pol core element with the central large cleft and probably a clamp element that moves to open and close the cleft.
Synonyms:	RPA5; RPA39; RPA40; RPAC1; TCS3
Protein Families:	Druggable Genome, Stem cell - Pluripotency, Transcription Factors



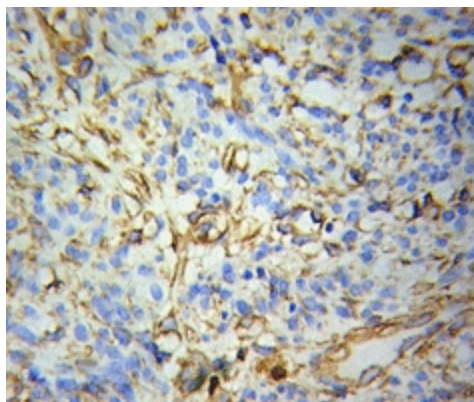
[View online »](#)

Protein Pathways: Cytosolic DNA-sensing pathway, Metabolic pathways, Purine metabolism, Pyrimidine metabolism, RNA polymerase

Product images:



Predicted band size: 39 kDa. Positive control: K562 and SW480 cell lysate. Recommended dilution: 1/500-2000. (Gel: 10%SDS-PAGE Lane 1: K562 cell lysate Lane 2: SW480 cell lysate Lysates: 40 ug per lane Primary antibody: 1/500 dilution Secondary antibody: Goat anti Rabbit IgG - H&L (HRP) at 1/10000 dilution Exposure time: 1 minute)



Predicted cell location: Nucleus. Positive control: Human spleen tissue. Recommended dilution: 1/50-200 The image is immunohistochemistry of paraffin-embedded Human spleen tissue using POLR1C antibody at dilution 1/50