

Product datasheet for **TA321953**

Tropomyosin 2 (TPM2) Rabbit Polyclonal Antibody

Product data:

Product Type:	Primary Antibodies
Applications:	IHC, WB
Recommended Dilution:	WB: 500-2000 WB positive control: Human cervical cancer tissue IHC: 50-200 Positive control: Human liver cancer Predicted cell location: Cytoplasm
Reactivity:	Human
Host:	Rabbit
Isotype:	IgG
Clonality:	Polyclonal
Immunogen:	Synthetic peptide corresponding to a region derived from 188-207 amino acids of Human tropomyosin 2 (beta)
Formulation:	PBS pH7.3, 0.05% NaN ₃ , 50% glycerol
Concentration:	lot specific
Purification:	Antigen affinity purification
Conjugation:	Unconjugated
Storage:	Store at -20°C as received.
Stability:	Stable for 12 months from date of receipt.
Predicted Protein Size:	33 kDa
Gene Name:	tropomyosin 2 (beta)
Database Link:	NP_998839 Entrez Gene 7169 Human P07951



[View online »](#)

Background:

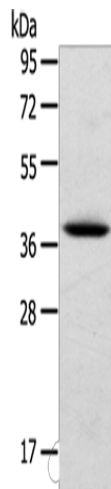
This gene encodes beta-tropomyosin; a member of the actin filament binding protein family; and mainly expressed in slow; type 1 muscle fibers. Mutations in this gene can alter the expression of other sarcomeric tropomyosin proteins; and cause cap disease; nemaline myopathy and distal arthrogyrosis syndromes. Alternatively spliced transcript variants encoding different isoforms have been found for this gene. TPM2 has been shown to interact with RRAD; PDLIM7 and TPM1.

Synonyms:

AMCD1; DA1; DA2B; HEL-S-273; NEM4; TMSB

Protein Pathways:

Cardiac muscle contraction, Dilated cardiomyopathy, Hypertrophic cardiomyopathy (HCM)

Product images:

Gel: 10%SDS-PAGE

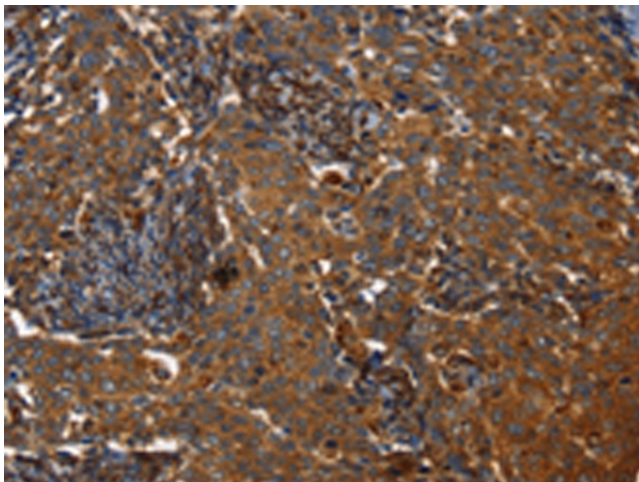
Lysate: 40 µg

Lane: Human cervical cancer tissue

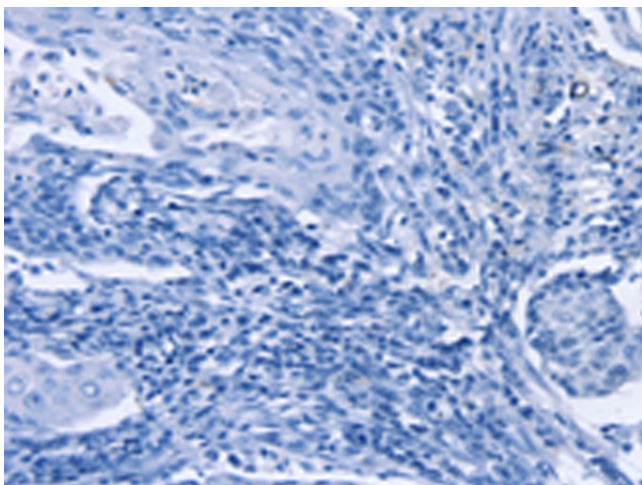
Primary antibody: TA321953 (TPM2 Antibody) at dilution 1/750

Secondary antibody: Goat anti rabbit IgG at 1/8000 dilution

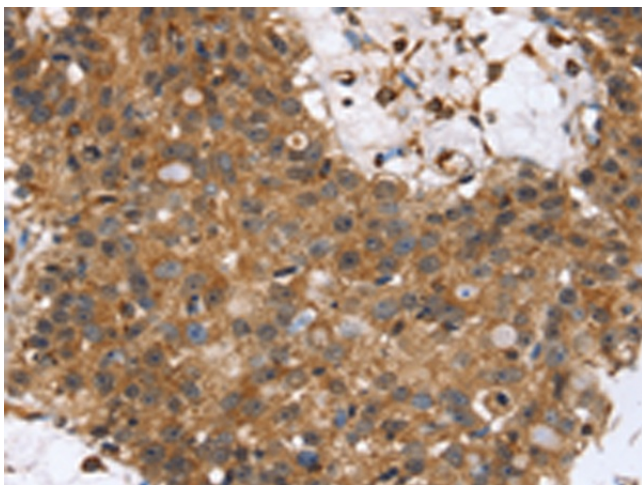
Exposure time: 2 minutes



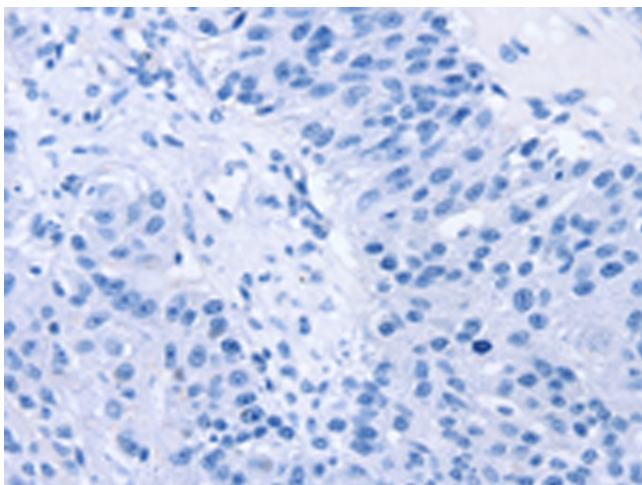
Immunohistochemistry of paraffin-embedded Human liver cancer tissue using TA321953 (TPM2 Antibody) at dilution 1/35 (Original magnification: ×200)



Immunohistochemistry of paraffin-embedded Human liver cancer tissue using TA321953 (TPM2 Antibody) at dilution 1/35, treated with synthetic peptide. (Original magnification: ×200)



Immunohistochemistry of paraffin-embedded Human lung cancer tissue using TA321953 (TPM2 Antibody) at dilution 1/35 (Original magnification: ×200)



Immunohistochemistry of paraffin-embedded Human lung cancer tissue using TA321953 (TPM2 Antibody) at dilution 1/35, treated with synthetic peptide. (Original magnification: ×200)