

Product datasheet for **TA321951**

Telomerase reverse transcriptase (TERT) Rabbit Polyclonal Antibody

Product data:

Product Type:	Primary Antibodies
Applications:	IHC, WB
Recommended Dilution:	WB: 500-2000 WB positive control: Human mucinous type of soft tissue sarcoma tissue lysate IHC: 100-300 Positive control: Human colorectal cancer Predicted cell location: Nucleus and Cytoplasm
Reactivity:	Human
Host:	Rabbit
Isotype:	IgG
Clonality:	Polyclonal
Immunogen:	Synthetic peptide corresponding to a region derived from 1120-1132 amino acids of human telomerase reverse transcriptase
Formulation:	PBS pH7.3, 0.05% NaN ₃ , 50% glycerol
Concentration:	lot specific
Purification:	Antigen affinity purification
Conjugation:	Unconjugated
Storage:	Store at -20°C as received.
Stability:	Stable for 12 months from date of receipt.
Gene Name:	telomerase reverse transcriptase
Database Link:	NP_937986 Entrez Gene 7015 Human O14746



[View online »](#)

Background:

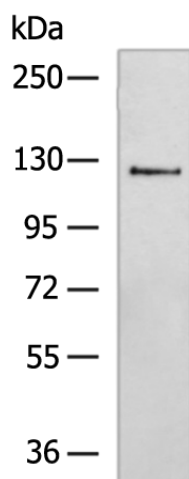
Telomerase is a ribonucleoprotein polymerase that maintains telomere ends by addition of the telomere repeat TTAGGG. The enzyme consists of a protein component with reverse transcriptase activity; encoded by this gene; and an RNA component which serves as a template for the telomere repeat. Telomerase expression plays a role in cellular senescence; as it is normally repressed in postnatal somatic cells resulting in progressive shortening of telomeres. Deregulation of telomerase expression in somatic cells may be involved in oncogenesis. Studies in mouse suggest that telomerase also participates in chromosomal repair; since de novo synthesis of telomere repeats may occur at double-stranded breaks. Alternatively spliced variants encoding different isoforms of telomerase reverse transcriptase have been identified; the full-length sequence of some variants has not been determined. Alternative splicing at this locus is thought to be one mechanism of regulation of telomerase activity.

Synonyms:

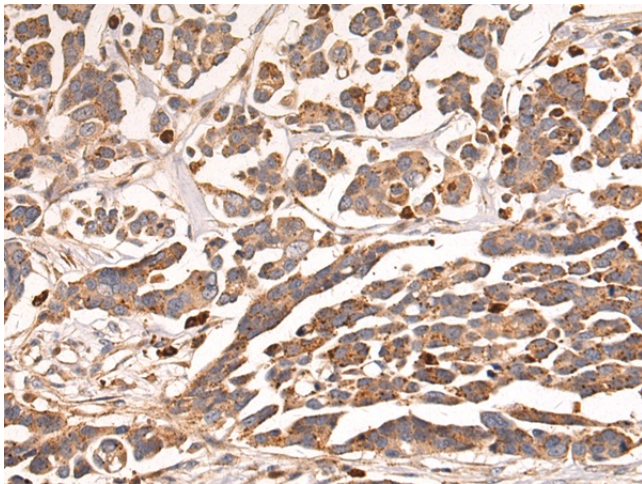
EST2; hEST2; TCS1; telomerase catalytic subunit; telomerase reverse transcriptase; TP2; TRT

Protein Families:

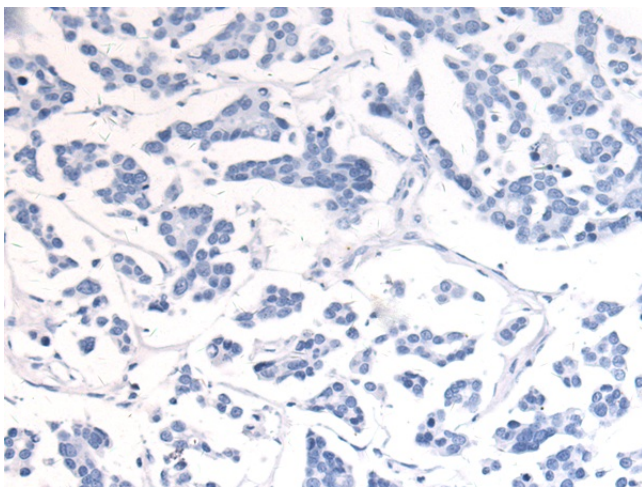
Druggable Genome

Product images:

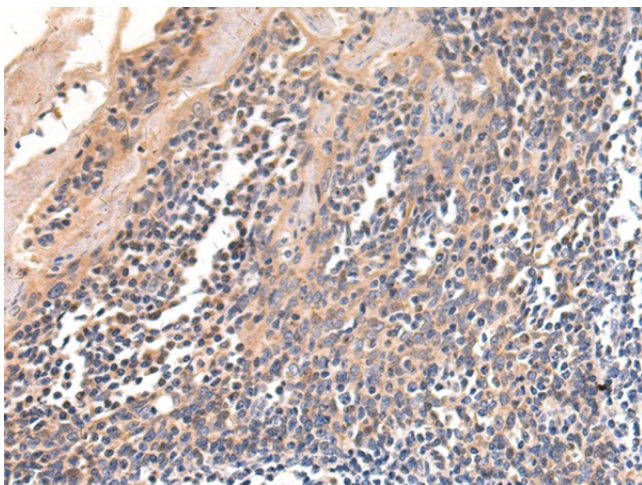
Gel: 6%SDS-PAGE
Lysate: 40 μ g
Lane: Human mucinous type of soft tissue sarcoma tissue lysate
Primary antibody: TA321951 (TERT Antibody) at dilution 1/700
Secondary antibody: Goat anti rabbit IgG at 1/5000 dilution
Exposure time: 90 seconds



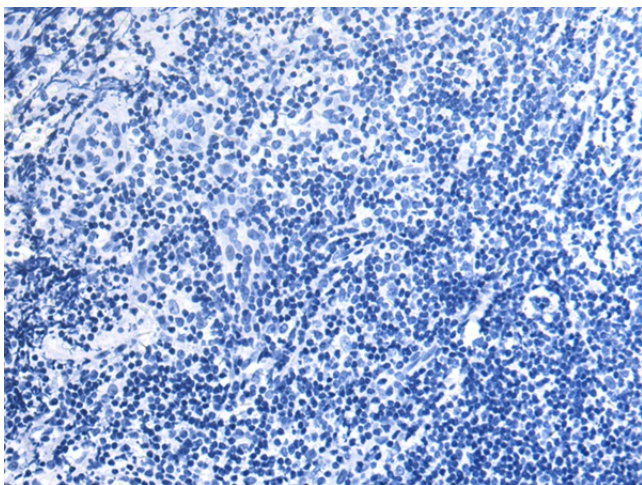
Immunohistochemistry of paraffin-embedded Human colorectal cancer tissue using TA321951 (TERT Antibody) at dilution 1/70 (Original magnification: $\times 200$)



Immunohistochemistry of paraffin-embedded Human colorectal cancer tissue using TA321951 (TERT Antibody) at dilution 1/70, treated with synthetic peptide. (Original magnification: $\times 200$)



Immunohistochemistry of paraffin-embedded Human tonsil tissue using TA321951 (TERT Antibody) at dilution 1/70 (Original magnification: $\times 200$)



Immunohistochemistry of paraffin-embedded Human tonsil tissue using TA321951 (TERT Antibody) at dilution 1/70, treated with synthetic peptide. (Original magnification: $\times 200$)