

Product datasheet for **TA321949**

DAP12 (TYROBP) Rabbit Polyclonal Antibody

Product data:

Product Type:	Primary Antibodies
Applications:	IHC
Recommended Dilution:	IHC: 25-100 Positive control: Human thyroid cancer Predicted cell location: Cytoplasm
Reactivity:	Human, Mouse, Rat
Host:	Rabbit
Isotype:	IgG
Clonality:	Polyclonal
Immunogen:	Synthetic peptide corresponding to a region derived from 28-40 amino acids of Human TYRO protein tyrosine kinase binding protein
Formulation:	PBS pH7.3, 0.05% NaN ₃ , 50% glycerol
Concentration:	lot specific
Purification:	Antigen affinity purification
Conjugation:	Unconjugated
Storage:	Store at -20°C as received.
Stability:	Stable for 12 months from date of receipt.
Gene Name:	TYRO protein tyrosine kinase binding protein
Database Link:	NP_937758 Entrez Gene 22177 Mouse Entrez Gene 361537 Rat Entrez Gene 7305 Human O43914



[View online »](#)

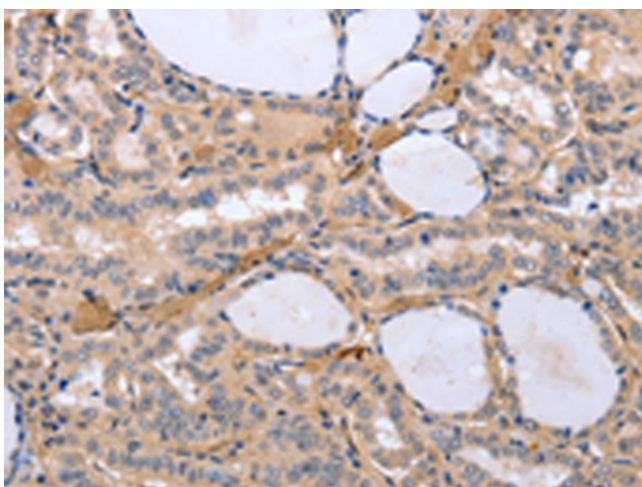
Background: This gene encodes a transmembrane signaling polypeptide which contains an immunoreceptor tyrosine-based activation motif (ITAM) in its cytoplasmic domain. The encoded protein may associate with the killer-cell inhibitory receptor (KIR) family of membrane glycoproteins and may act as an activating signal transduction element. This protein may bind zeta-chain (TCR) associated protein kinase 70kDa (ZAP-70) and spleen tyrosine kinase (SYK) and play a role in signal transduction; bone modeling; brain myelination; and inflammation. Mutations within this gene have been associated with polycystic lipomembranous osteodysplasia with sclerosing leukoencephalopathy (PLOSL); also known as Nasu-Hakola disease. Its putative receptor; triggering receptor expressed on myeloid cells 2 (TREM2); also causes PLOSL. Multiple alternative transcript variants encoding distinct isoforms have been identified for this gene.

Synonyms: DAP12; KARAP; PLOSL

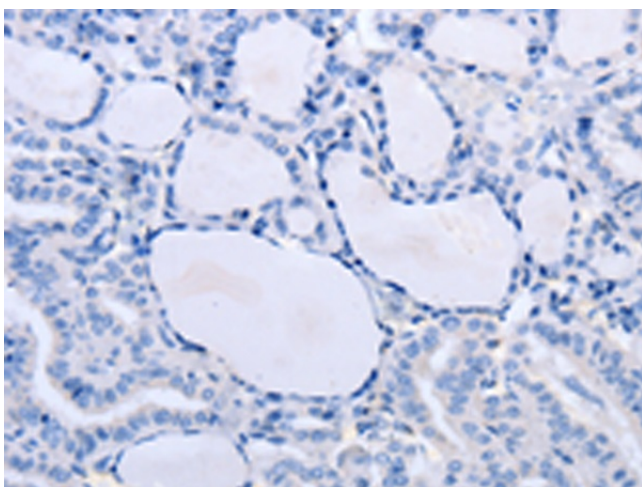
Protein Families: Druggable Genome, Transmembrane

Protein Pathways: Natural killer cell mediated cytotoxicity

Product images:



Immunohistochemistry of paraffin-embedded Human thyroid cancer tissue using TA321949 (TYROBP Antibody) at dilution 1/30 (Original magnification: $\times 200$)



Immunohistochemistry of paraffin-embedded Human thyroid cancer tissue using TA321949 (TYROBP Antibody) at dilution 1/30, treated with synthetic peptide. (Original magnification: ×200)