

## Product datasheet for **TA321948**

### Aquaporin 1 (AQP1) Rabbit Polyclonal Antibody

#### Product data:

Product Type:	Primary Antibodies
Applications:	IHC, WB
Recommended Dilution:	WB: 500-2000 WB positive control: Human normal kidney tissue IHC: 25-100 Positive control: Human prostate cancer Predicted cell location: Cytoplasm and Cell membrane
Reactivity:	Human, Mouse, Rat
Host:	Rabbit
Isotype:	IgG
Clonality:	Polyclonal
Immunogen:	Synthetic peptide corresponding to a region derived from 255-269 amino acids of Human aquaporin 1 (Colton blood group)
Formulation:	PBS pH7.3, 0.05% NaN <sub>3</sub> , 50% glycerol
Concentration:	lot specific
Purification:	Antigen affinity purification
Conjugation:	Unconjugated
Storage:	Store at -20°C as received.
Stability:	Stable for 12 months from date of receipt.
Gene Name:	aquaporin 1 (Colton blood group)
Database Link:	<a href="#">NP_000376</a> <a href="#">Entrez Gene 11826 Mouse</a> <a href="#">Entrez Gene 25240 Rat</a> <a href="#">Entrez Gene 358 Human</a> <a href="#">P29972</a>



[View online »](#)

**Background:**

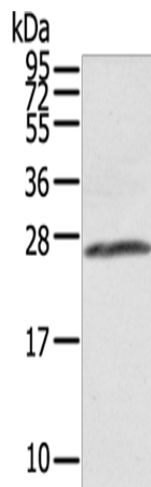
Aquaporins are a family of small integral membrane proteins related to the major intrinsic protein (MIP or AQP0). This gene encodes an aquaporin which functions as a molecular water channel protein. It is a homotetramer with 6 bilayer spanning domains and N-glycosylation sites. The protein physically resembles channel proteins and is abundant in erythrocytes and renal tubes. The gene encoding this aquaporin is a possible candidate for disorders involving imbalance in ocular fluid movement. Several transcript variants encoding different isoforms have been found for this gene.

**Synonyms:**

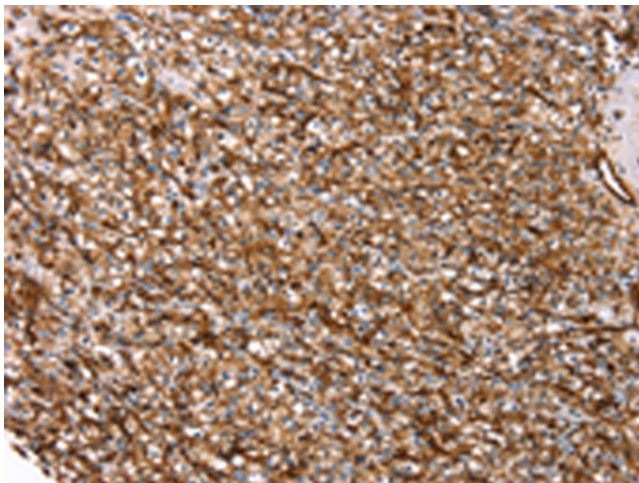
28-kDa; 28kDa; AQP-CHIP; aquaporin 1; aquaporin 1 (channel-forming integral protein; aquaporin 1 (Colton blood group); channel-like integral membrane protein; CHIP28; CO; CO blood group); Colton blood group; MGC26324

**Protein Families:**

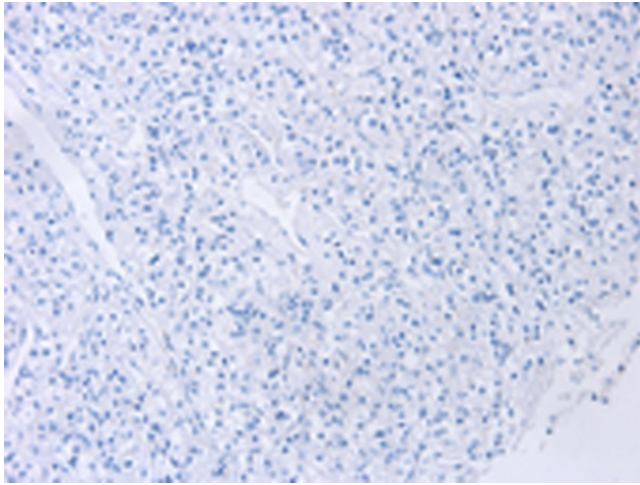
Druggable Genome, Ion Channels: Other, Transmembrane

**Product images:**

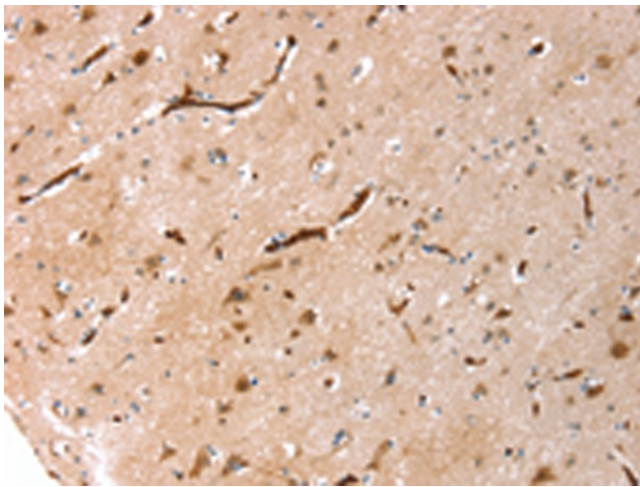
Gel: 12%SDS-PAGE  
Lysate: 40 µg  
Lane: Human normal kidney tissue  
Primary antibody: TA321948 (AQP1 Antibody) at dilution 1/300  
Secondary antibody: Goat anti rabbit IgG at 1/8000 dilution  
Exposure time: 5 seconds



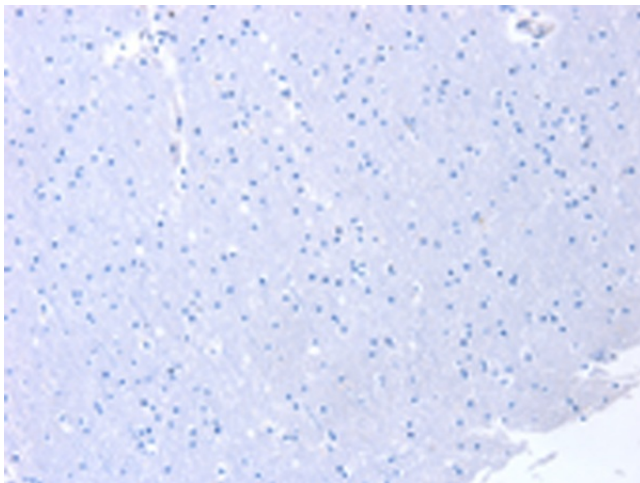
Immunohistochemistry of paraffin-embedded Human prostate cancer tissue using TA321948 (AQP1 Antibody) at dilution 1/20 (Original magnification: ×200)



Immunohistochemistry of paraffin-embedded Human prostate cancer tissue using TA321948 (AQP1 Antibody) at dilution 1/20, treated with synthetic peptide. (Original magnification: ×200)



Immunohistochemistry of paraffin-embedded Human brain tissue using TA321948 (AQP1 Antibody) at dilution 1/20 (Original magnification: ×200)



Immunohistochemistry of paraffin-embedded Human brain tissue using TA321948 (AQP1 Antibody) at dilution 1/20, treated with synthetic peptide. (Original magnification: ×200)