

Product datasheet for **TA321947**

Aquaporin 1 (AQP1) Rabbit Polyclonal Antibody

Product data:

Product Type:	Primary Antibodies
Applications:	IHC
Recommended Dilution:	IHC: 25-100 Positive control: Human esophagus cancer Predicted cell location: Cell membrane
Reactivity:	Human, Mouse, Rat
Host:	Rabbit
Isotype:	IgG
Clonality:	Polyclonal
Immunogen:	Synthetic peptide corresponding to a region derived from 255-269 amino acids of Human aquaporin 1 (Colton blood group)
Formulation:	PBS pH7.3, 0.05% NaN ₃ , 50% glycerol
Concentration:	lot specific
Purification:	Antigen affinity purification
Conjugation:	Unconjugated
Storage:	Store at -20°C as received.
Stability:	Stable for 12 months from date of receipt.
Gene Name:	aquaporin 1 (Colton blood group)
Database Link:	NP_000376 Entrez Gene 11826 MouseEntrez Gene 25240 RatEntrez Gene 358 Human P29972

Background: Aquaporins are a family of small integral membrane proteins related to the major intrinsic protein (MIP or AQP0). This gene encodes an aquaporin which functions as a molecular water channel protein. It is a homotetramer with 6 bilayer spanning domains and N-glycosylation sites. The protein physically resembles channel proteins and is abundant in erythrocytes and renal tubes. The gene encoding this aquaporin is a possible candidate for disorders involving imbalance in ocular fluid movement. Several transcript variants encoding different isoforms have been found for this gene.

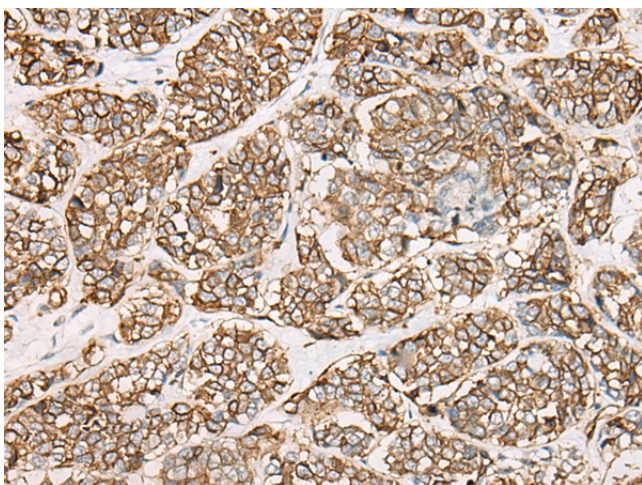


[View online »](#)

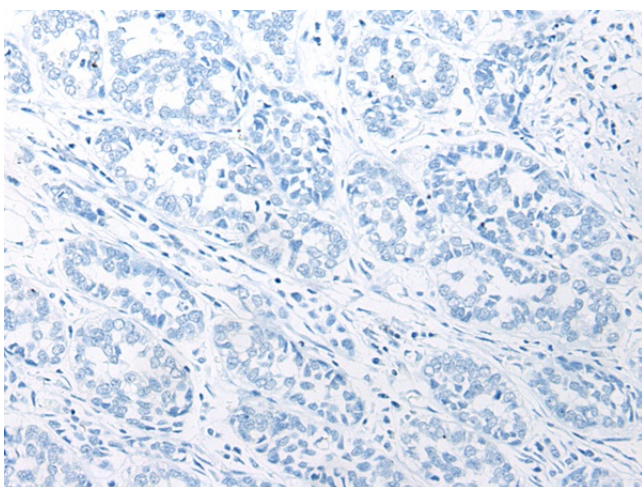
Synonyms: 28-kDa; 28kDa; AQP-CHIP; aquaporin 1; aquaporin 1 (channel-forming integral protein; aquaporin 1 (Colton blood group); channel-like integral membrane protein; CHIP28; CO; CO blood group); Colton blood group; MGC26324

Protein Families: Druggable Genome, Ion Channels: Other, Transmembrane

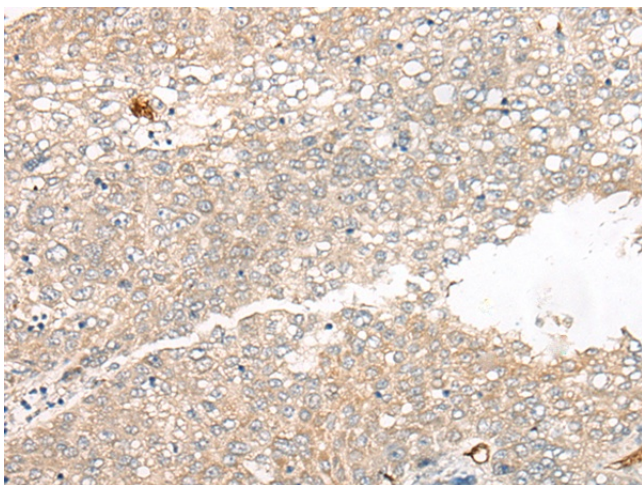
Product images:



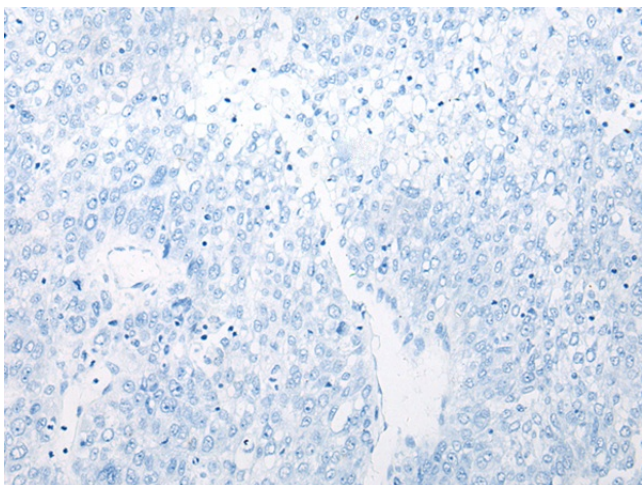
Immunohistochemistry of paraffin-embedded Human esophagus cancer tissue using TA321947 (AQP1 Antibody) at dilution 1/25 (Original magnification: $\times 200$)



Immunohistochemistry of paraffin-embedded Human esophagus cancer tissue using TA321947 (AQP1 Antibody) at dilution 1/25, treated with synthetic peptide. (Original magnification: $\times 200$)



Immunohistochemistry of paraffin-embedded Human liver cancer tissue using TA321947 (AQP1 Antibody) at dilution 1/25 (Original magnification: $\times 200$)



Immunohistochemistry of paraffin-embedded Human liver cancer tissue using TA321947 (AQP1 Antibody) at dilution 1/25, treated with synthetic peptide. (Original magnification: $\times 200$)