

Product datasheet for **TA321946**

AGR3 Rabbit Polyclonal Antibody

Product data:

| | |
|-----------------------|------------------------------------------------------------------------------------------------------------------------------------------|
| Product Type: | Primary Antibodies |
| Applications: | IHC |
| Recommended Dilution: | IHC: 15-50 Positive control: Human breast cancer Predicted cell location: Cytoplasm |
| Reactivity: | Human, Mouse |
| Host: | Rabbit |
| Isotype: | IgG |
| Clonality: | Polyclonal |
| Immunogen: | Fusion protein corresponding to a region derived from 22-166 amino acids of human anterior gradient 3 homolog (Xenopus laevis) |
| Formulation: | PBS pH7.3, 0.05% NaN ₃ , 50% glycerol |
| Concentration: | lot specific |
| Purification: | Antigen affinity purification |
| Conjugation: | Unconjugated |
| Storage: | Store at -20°C as received. |
| Stability: | Stable for 12 months from date of receipt. |
| Gene Name: | anterior gradient 3, protein disulphide isomerase family member |
| Database Link: | NP_789783 Entrez Gene 403205 Mouse Entrez Gene 155465 Human Q8TD06 |



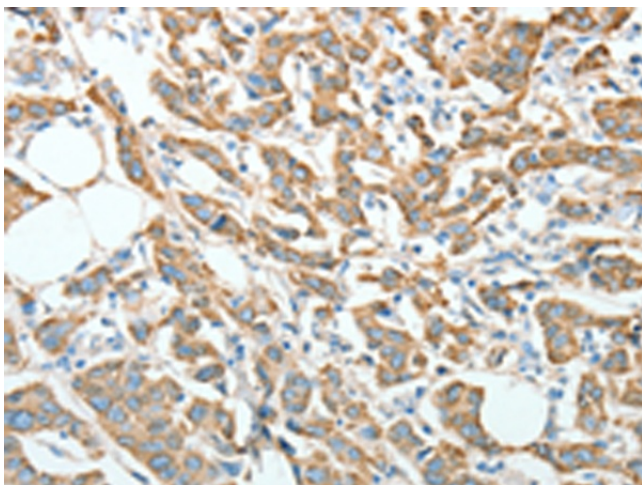
[View online »](#)

Background: Anterior gradient protein 3 homolog is a protein that in humans is encoded by the AGR3 gene. The deduced 166-amino acid protein has an N-terminal signal sequence. Fluorescence-tagged BCMP11 localized in secretory or endosome-like organelles in transfected breast carcinoma cell lines. Immunohistochemical analysis showed that expression of BCMP11 was restricted in normal tissues, with significant staining of only the epithelial lining of colonic mucosa. However, BCMP11 was detected in 43 of 58 (74%) breast cancer tissues tested, but not in normal breast ductal epithelial cells. In cancerous epithelial cells, BCMP11 localized to the cytoplasm.

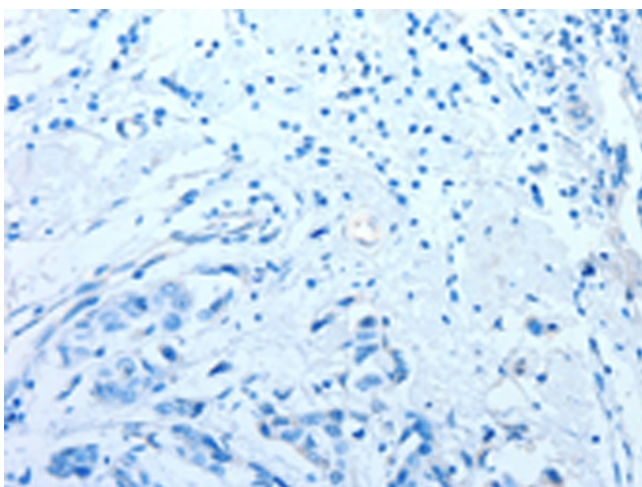
Synonyms: AG-3; AG3; BCMP11; hAG-3; HAG3; PDIA18

Protein Families: Secreted Protein

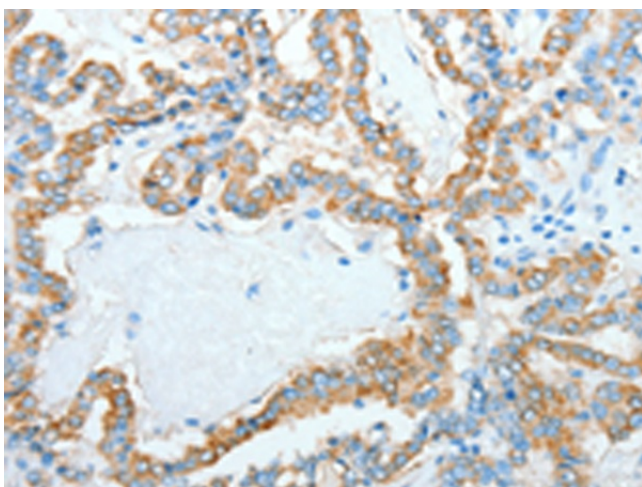
Product images:



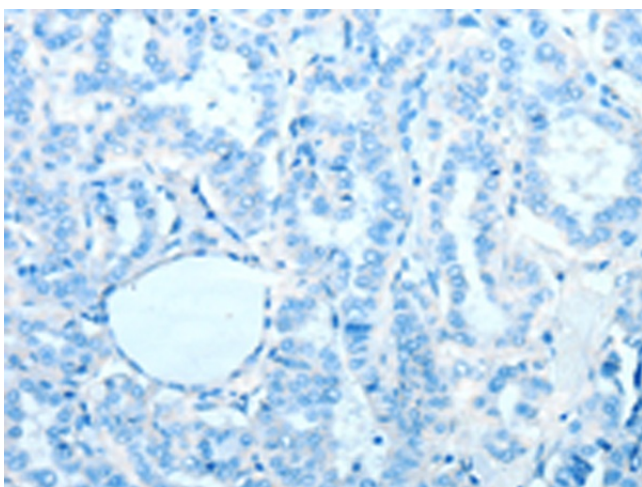
Immunohistochemistry of paraffin-embedded Human breast cancer tissue using TA321946 (AGR3 Antibody) at dilution 1/10 (Original magnification: $\times 200$)



Immunohistochemistry of paraffin-embedded Human breast cancer tissue using TA321946 (AGR3 Antibody) at dilution 1/10, treated with fusion protein. (Original magnification: $\times 200$)



Immunohistochemistry of paraffin-embedded Human thyroid cancer tissue using TA321946 (AGR3 Antibody) at dilution 1/10 (Original magnification: ×200)



Immunohistochemistry of paraffin-embedded Human thyroid cancer tissue using TA321946 (AGR3 Antibody) at dilution 1/10, treated with fusion protein. (Original magnification: ×200)