

## Product datasheet for **TA321943S**

### CCKBR Rabbit Polyclonal Antibody

#### Product data:

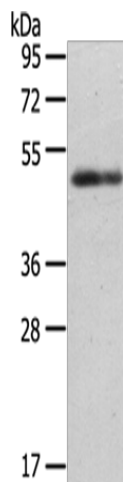
|                         |                                                                                                                                                                                                                                                                                                                                                                                                                                                                                    |
|-------------------------|------------------------------------------------------------------------------------------------------------------------------------------------------------------------------------------------------------------------------------------------------------------------------------------------------------------------------------------------------------------------------------------------------------------------------------------------------------------------------------|
| Product Type:           | Primary Antibodies                                                                                                                                                                                                                                                                                                                                                                                                                                                                 |
| Applications:           | WB                                                                                                                                                                                                                                                                                                                                                                                                                                                                                 |
| Recommended Dilution:   | WB: 500-2000<br>WB positive control: Human stomach cancer tissue                                                                                                                                                                                                                                                                                                                                                                                                                   |
| Reactivity:             | Human, Mouse, Rat                                                                                                                                                                                                                                                                                                                                                                                                                                                                  |
| Host:                   | Rabbit                                                                                                                                                                                                                                                                                                                                                                                                                                                                             |
| Isotype:                | IgG                                                                                                                                                                                                                                                                                                                                                                                                                                                                                |
| Clonality:              | Polyclonal                                                                                                                                                                                                                                                                                                                                                                                                                                                                         |
| Immunogen:              | Synthetic peptide corresponding to a region derived from 39-53 amino acids of Human cholecystokinin B receptor                                                                                                                                                                                                                                                                                                                                                                     |
| Formulation:            | PBS pH7.3, 0.05% NaN <sub>3</sub> , 50% glycerol                                                                                                                                                                                                                                                                                                                                                                                                                                   |
| Purification:           | Antigen affinity purification                                                                                                                                                                                                                                                                                                                                                                                                                                                      |
| Conjugation:            | Unconjugated                                                                                                                                                                                                                                                                                                                                                                                                                                                                       |
| Storage:                | Store at -20°C as received.                                                                                                                                                                                                                                                                                                                                                                                                                                                        |
| Stability:              | Stable for 12 months from date of receipt.                                                                                                                                                                                                                                                                                                                                                                                                                                         |
| Predicted Protein Size: | 49 kDa                                                                                                                                                                                                                                                                                                                                                                                                                                                                             |
| Gene Name:              | cholecystokinin B receptor                                                                                                                                                                                                                                                                                                                                                                                                                                                         |
| Database Link:          | <a href="#">NP_795344</a><br><a href="#">Entrez Gene 12426 Mouse</a> <a href="#">Entrez Gene 25706 Rat</a> <a href="#">Entrez Gene 887 Human</a><br><a href="#">P32239</a>                                                                                                                                                                                                                                                                                                         |
| Background:             | This gene encodes a G-protein coupled receptor for gastrin and cholecystokinin (CCK); regulatory peptides of the brain and gastrointestinal tract. This protein is a type B gastrin receptor; which has a high affinity for both sulfated and nonsulfated CCK analogs and is found principally in the central nervous system and the gastrointestinal tract. A misspliced transcript variant including an intron has been observed in cells from colorectal and pancreatic tumors. |
| Synonyms:               | CCK-B; CCK2R; GASR                                                                                                                                                                                                                                                                                                                                                                                                                                                                 |
| Protein Families:       | Druggable Genome, GPCR, Transmembrane                                                                                                                                                                                                                                                                                                                                                                                                                                              |



[View online »](#)

Protein Pathways: Calcium signaling pathway, Neuroactive ligand-receptor interaction

### Product images:



Gel: 8%SDS-PAGE  
Lysate: 40  $\mu$ g  
Lane: Human stomach cancer tissue  
Primary antibody: [TA321943] (CCKBR Antibody)  
at dilution 1/200  
Secondary antibody: Goat anti rabbit IgG at  
1/8000 dilution  
Exposure time: 40 seconds