

Product datasheet for **TA321943**

CCKBR Rabbit Polyclonal Antibody

Product data:

| | |
|-------------------------|--|
| Product Type: | Primary Antibodies |
| Applications: | WB |
| Recommended Dilution: | WB: 500-2000 WB positive control: Human stomach cancer tissue |
| Reactivity: | Human, Mouse, Rat |
| Host: | Rabbit |
| Isotype: | IgG |
| Clonality: | Polyclonal |
| Immunogen: | Synthetic peptide corresponding to a region derived from 39-53 amino acids of Human cholecystokinin B receptor |
| Formulation: | PBS pH7.3, 0.05% NaN ₃ , 50% glycerol |
| Concentration: | lot specific |
| Purification: | Antigen affinity purification |
| Conjugation: | Unconjugated |
| Storage: | Store at -20°C as received. |
| Stability: | Stable for 12 months from date of receipt. |
| Predicted Protein Size: | 49 kDa |
| Gene Name: | cholecystokinin B receptor |
| Database Link: | NP_795344 Entrez Gene 12426 Mouse Entrez Gene 25706 Rat Entrez Gene 887 Human P32239 |
| Background: | This gene encodes a G-protein coupled receptor for gastrin and cholecystokinin (CCK); regulatory peptides of the brain and gastrointestinal tract. This protein is a type B gastrin receptor; which has a high affinity for both sulfated and nonsulfated CCK analogs and is found principally in the central nervous system and the gastrointestinal tract. A misspliced transcript variant including an intron has been observed in cells from colorectal and pancreatic tumors. |
| Synonyms: | CCK-B; CCK2R; GASR |

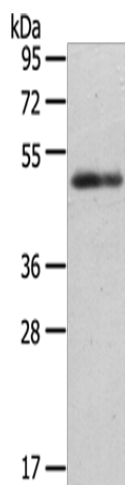


[View online »](#)

Protein Families: Druggable Genome, GPCR, Transmembrane

Protein Pathways: Calcium signaling pathway, Neuroactive ligand-receptor interaction

Product images:



Gel: 8%SDS-PAGE

Lysate: 40 μ g

Lane: Human stomach cancer tissue

Primary antibody: TA321943 (CCKBR Antibody) at dilution 1/200

Secondary antibody: Goat anti rabbit IgG at 1/8000 dilution

Exposure time: 40 seconds