

Product datasheet for **TA321942**

RHOC Rabbit Polyclonal Antibody

Product data:

Product Type:	Primary Antibodies
Applications:	WB
Recommended Dilution:	WB: 500-2000 WB positive control: Human fetal brain tissue
Reactivity:	Human, Mouse
Host:	Rabbit
Isotype:	IgG
Clonality:	Polyclonal
Immunogen:	Synthetic peptide corresponding to a region derived from 179-189 amino acids of Human ras homolog family member C
Formulation:	PBS pH7.3, 0.05% NaN ₃ , 50% glycerol
Concentration:	lot specific
Purification:	Antigen affinity purification
Conjugation:	Unconjugated
Storage:	Store at -20°C as received.
Stability:	Stable for 12 months from date of receipt.
Predicted Protein Size:	22 kDa
Gene Name:	ras homolog family member C
Database Link:	NP_786886 Entrez Gene 11853 Mouse Entrez Gene 389 Human P08134



[View online »](#)

Background:

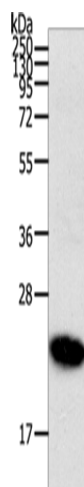
This gene encodes a member of the Rho family of small GTPases; which cycle between inactive GDP-bound and active GTP-bound states and function as molecular switches in signal transduction cascades. Rho proteins promote reorganization of the actin cytoskeleton and regulate cell shape; attachment; and motility. The protein encoded by this gene is prenylated at its C-terminus; and localizes to the cytoplasm and plasma membrane. It is thought to be important in cell locomotion. Overexpression of this gene is associated with tumor cell proliferation and metastasis. Multiple alternatively spliced variants; encoding the same protein; have been identified.

Synonyms:

ARH9; ARHC; H9; RHOH9

Protein Families:

Druggable Genome

Product images:

Gel: 12%SDS-PAGE

Lysate: 40 µg

Lane: Human fetal brain tissue

Primary antibody: TA321942 (RHOC Antibody) at dilution 1/300

Secondary antibody: Goat anti rabbit IgG at 1/8000 dilution

Exposure time: 2 minutes