

## Product datasheet for **TA321939S**

### CHRFAM7A Rabbit Polyclonal Antibody

#### Product data:

Product Type:	Primary Antibodies
Applications:	IHC, WB
Recommended Dilution:	WB: 500-2000 WB positive control: Mouse heart tissue IHC: 25-100 Positive control: Human liver cancer Predicted cell location: Cytoplasm
Reactivity:	Human, Mouse, Rat
Host:	Rabbit
Isotype:	IgG
Clonality:	Polyclonal
Immunogen:	Synthetic peptide peptide corresponding to a region derived from 32-46 amino acids of human CHRNA7 (cholinergic receptor, nicotinic, alpha 7, exons 5-10) and FAM7A (family with sequence similarity 7A, exons A-E) fusion
Formulation:	PBS pH7.3, 0.05% NaN <sub>3</sub> , 50% glycerol
Purification:	Antigen affinity purification
Conjugation:	Unconjugated
Storage:	Store at -20°C as received.
Stability:	Stable for 12 months from date of receipt.
Predicted Protein Size:	46 kDa
Gene Name:	CHRNA7 (exons 5-10) and FAM7A (exons A-E) fusion
Database Link:	<a href="#">NP_683709</a> <a href="#">Entrez Gene 89832 Human</a> <a href="#">Q494W8</a>



[View online »](#)

**Background:**

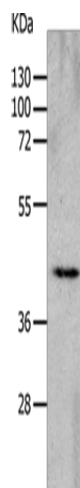
The nicotinic acetylcholine receptors (nAChRs) are members of a superfamily of ligand-gated ion channels that mediate fast signal transmission at synapses. The family member CHRNA7; which is located on chromosome 15 in a region associated with several neuropsychiatric disorders; is partially duplicated and forms a hybrid with a novel gene from the family with sequence similarity 7 (FAM7A). Alternative splicing has been observed; and two variants exist; for this hybrid gene. The N-terminally truncated products predicted by the largest open reading frames for each variant would lack the majority of the neurotransmitter-gated ion-channel ligand binding domain but retain the transmembrane region that forms the ion channel. Although current evidence supports transcription of this hybrid gene; translation of the nicotinic acetylcholine receptor-like protein-encoding open reading frames has not been confirmed.

**Synonyms:**

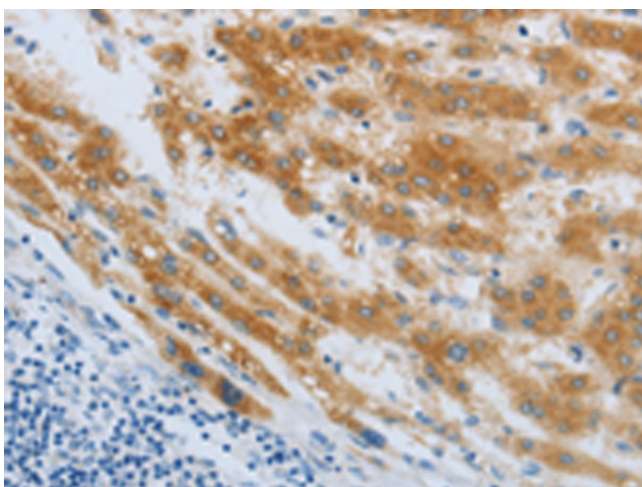
CHRNA7; CHRNA7-DR1; D-10

**Protein Families:**

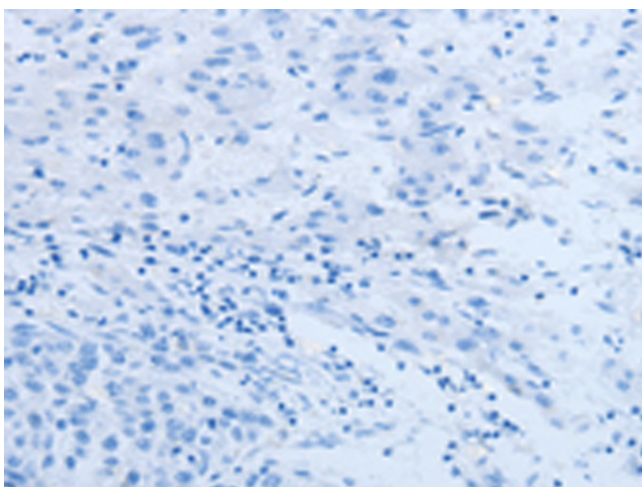
Druggable Genome, Ion Channels: Other, Transmembrane

**Product images:**

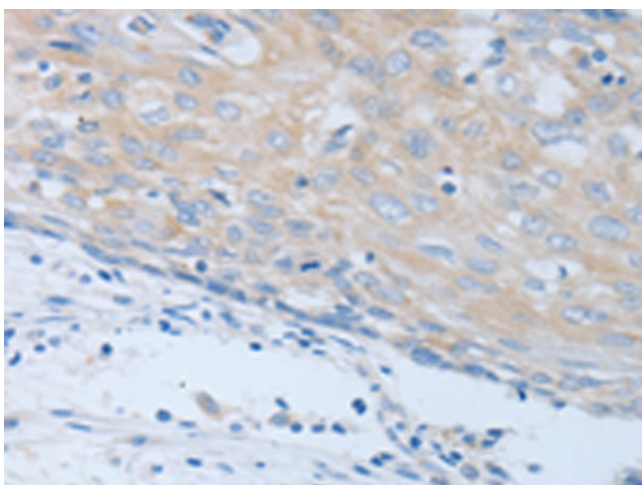
Gel: 10%SDS-PAGE  
Lysate: 40 µg  
Lane: Mouse heart tissue  
Primary antibody: [TA321939] (CHRFAM7A Antibody) at dilution 1/700  
Secondary antibody: Goat anti rabbit IgG at 1/8000 dilution  
Exposure time: 2 minutes



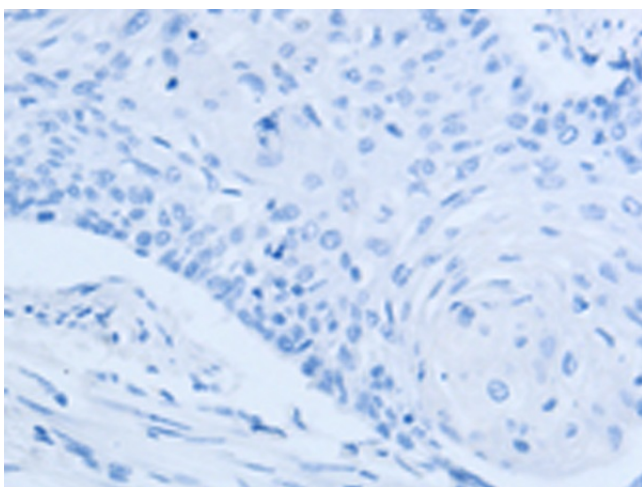
Immunohistochemistry of paraffin-embedded Human liver cancer tissue using [TA321939] (CHRFAM7A Antibody) at dilution 1/40 (Original magnification:  $\times 200$ )



Immunohistochemistry of paraffin-embedded Human liver cancer tissue using [TA321939] (CHRFAM7A Antibody) at dilution 1/40, treated with synthetic peptide. (Original magnification:  $\times 200$ )



Immunohistochemistry of paraffin-embedded Human cervical cancer tissue using [TA321939] (CHRFAM7A Antibody) at dilution 1/40 (Original magnification:  $\times 200$ )



Immunohistochemistry of paraffin-embedded Human cervical cancer tissue using [TA321939] (CHRFAM7A Antibody) at dilution 1/40, treated with synthetic peptide. (Original magnification: ×200)