

## Product datasheet for **TA321937**

### IL27 Rabbit Polyclonal Antibody

#### Product data:

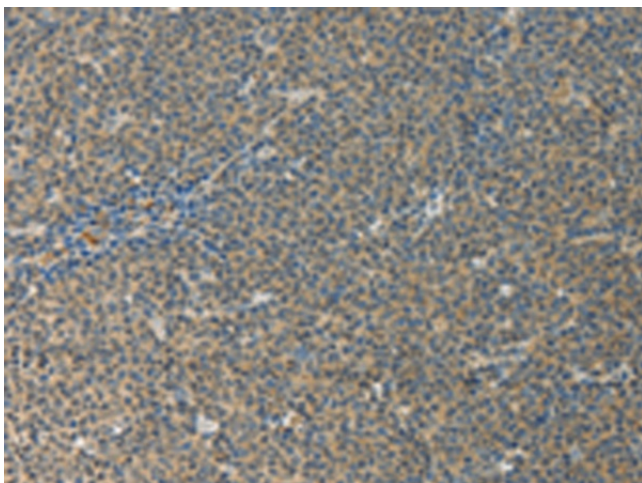
Product Type:	Primary Antibodies
Applications:	IHC
Recommended Dilution:	IHC: 25-100 Positive control: Human lymphoma Predicted cell location: Cytoplasm
Reactivity:	Human
Host:	Rabbit
Isotype:	IgG
Clonality:	Polyclonal
Immunogen:	Full length fusion protein
Formulation:	PBS pH7.3, 0.05% NaN <sub>3</sub> , 50% glycerol
Concentration:	lot specific
Purification:	Antigen affinity purification
Conjugation:	Unconjugated
Storage:	Store at -20°C as received.
Stability:	Stable for 12 months from date of receipt.
Gene Name:	interleukin 27
Database Link:	<a href="#">NP_663634</a> <a href="#">Entrez Gene 246778 Human</a> <a href="#">Q8NEV9</a>
Background:	The protein encoded by this gene is one of the subunits of a heterodimeric cytokine complex. This protein is related to interleukin 12A (IL12A). It interacts with Epstein-Barr virus induced gene 3 (EBI3); a protein similar to interleukin 12B (IL12B); and forms a complex that has been shown to drive rapid expansion of naive but not memory CD4(+) T cells. The complex is also found to synergize strongly with interleukin 12 to trigger interferon gamma (IFNG) production of naive CD4(+) T cells. The biological effects of this cytokine are mediated by the class I cytokine receptor (WSX1/TCRR)
Synonyms:	IL-27; IL-27A; IL27A; IL27p28; IL30; p28



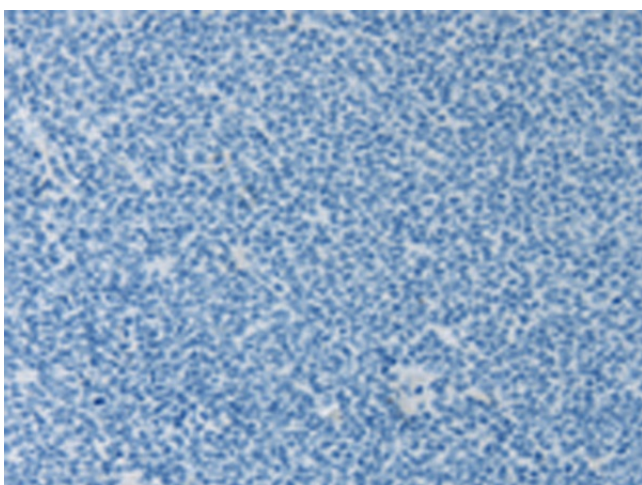
[View online »](#)

Protein Families: Druggable Genome, Transmembrane

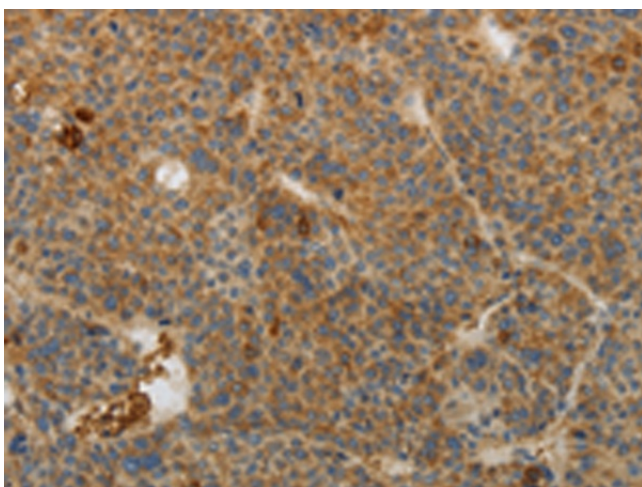
### Product images:



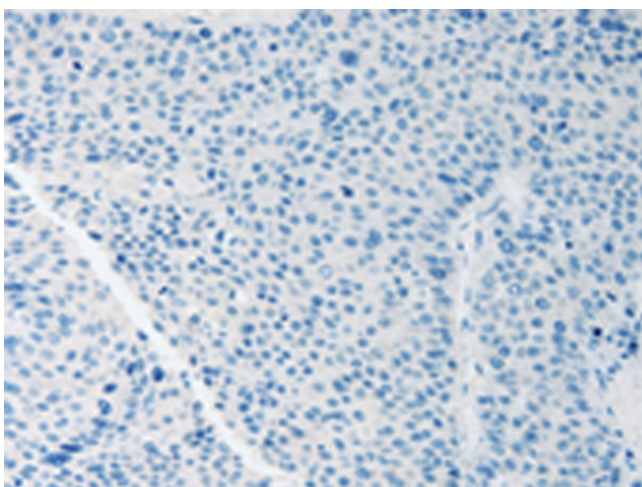
Immunohistochemistry of paraffin-embedded Human lymphoma tissue using TA321937 (IL27 Antibody) at dilution 1/10 (Original magnification: ×200)



Immunohistochemistry of paraffin-embedded Human lymphoma tissue using TA321937 (IL27 Antibody) at dilution 1/10, treated with fusion protein. (Original magnification: ×200)



Immunohistochemistry of paraffin-embedded Human liver cancer tissue using TA321937 (IL27 Antibody) at dilution 1/10 (Original magnification: ×200)



Immunohistochemistry of paraffin-embedded Human liver cancer tissue using TA321937 (IL27 Antibody) at dilution 1/10, treated with fusion protein. (Original magnification: ×200)