

Product datasheet for **TA321935S**

IL23 Receptor (IL23R) Rabbit Polyclonal Antibody

Product data:

Product Type:	Primary Antibodies
Applications:	IHC, WB
Recommended Dilution:	WB: 500-2000 WB positive control: Human sigmoid tissue IHC: 5-20 Positive control: Human rectal cancer Predicted cell location: Cytoplasm
Reactivity:	Human
Host:	Rabbit
Isotype:	IgG
Clonality:	Polyclonal
Immunogen:	Fusion protein corresponding to a region derived from 31-227 amino acids of Human Interleukin-23 receptor
Formulation:	PBS pH7.3, 0.05% NaN ₃ , 50% glycerol
Concentration:	lot specific
Purification:	Antigen affinity purification
Conjugation:	Unconjugated
Storage:	Store at -20°C as received.
Stability:	Stable for 12 months from date of receipt.
Predicted Protein Size:	72 kDa
Gene Name:	interleukin 23 receptor
Database Link:	NP_653302 Entrez Gene 149233 Human Q5VWK5
Background:	The protein encoded by this gene is a subunit of the receptor for IL23A/IL23. This protein pairs with the receptor molecule IL12RB1/IL12Rbeta1; and both are required for IL23A signaling. This protein associates constitutively with Janus kinase 2 (JAK2); and also binds to transcription activator STAT3 in a ligand-dependent manner.



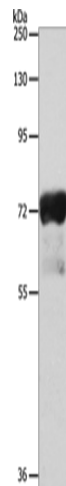
[View online »](#)

Synonyms: interleukin 23 receptor; OTTHUMP00000010660

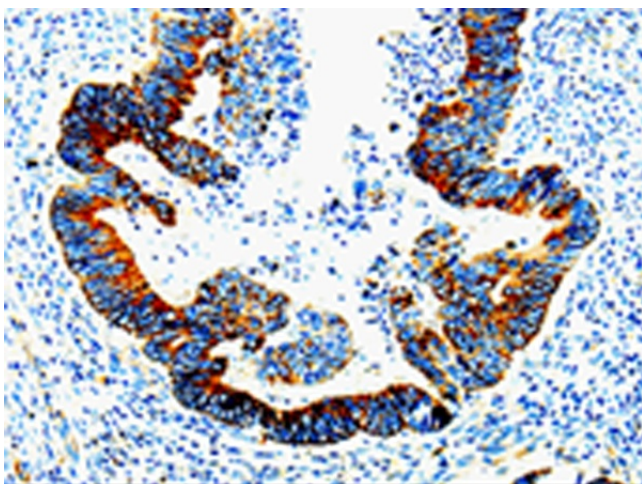
Protein Families: Druggable Genome, Transmembrane

Protein Pathways: Cytokine-cytokine receptor interaction, Jak-STAT signaling pathway

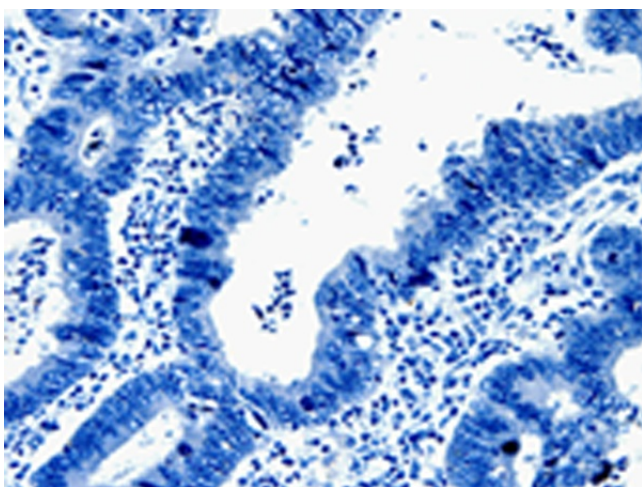
Product images:



Gel: 8%SDS-PAGE
Lysate: 40 µg
Lane: Human sigmoid tissue
Primary antibody: [TA321935] (IL23R Antibody) at dilution 1/300
Secondary antibody: Goat anti rabbit IgG at 1/8000 dilution
Exposure time: 30 seconds



Immunohistochemistry of paraffin-embedded Human rectal cancer tissue using [TA321935] (IL23R Antibody) at dilution 1/10 (Original magnification: ×200)



Immunohistochemistry of paraffin-embedded Human rectal cancer tissue using [TA321935] (IL23R Antibody) at dilution 1/10, treated with fusion protein. (Original magnification: ×200)