

## Product datasheet for **TA321935**

### IL23 Receptor (IL23R) Rabbit Polyclonal Antibody

#### Product data:

Product Type:	Primary Antibodies
Applications:	IHC, WB
Recommended Dilution:	WB: 500-2000 WB positive control: Human sigmoid tissue IHC: 5-20 Positive control: Human rectal cancer Predicted cell location: Cytoplasm
Reactivity:	Human
Host:	Rabbit
Isotype:	IgG
Clonality:	Polyclonal
Immunogen:	Fusion protein corresponding to a region derived from 31-227 amino acids of Human Interleukin-23 receptor
Formulation:	PBS pH7.3, 0.05% NaN <sub>3</sub> , 50% glycerol
Concentration:	lot specific
Purification:	Antigen affinity purification
Conjugation:	Unconjugated
Storage:	Store at -20°C as received.
Stability:	Stable for 12 months from date of receipt.
Predicted Protein Size:	72 kDa
Gene Name:	interleukin 23 receptor
Database Link:	<a href="#">NP_653302</a> <a href="#">Entrez Gene 149233 Human</a> <a href="#">Q5VWK5</a>
Background:	The protein encoded by this gene is a subunit of the receptor for IL23A/IL23. This protein pairs with the receptor molecule IL12RB1/IL12Rbeta1; and both are required for IL23A signaling. This protein associates constitutively with Janus kinase 2 (JAK2); and also binds to transcription activator STAT3 in a ligand-dependent manner.



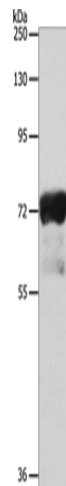
[View online »](#)

**Synonyms:** interleukin 23 receptor; OTTHUMP00000010660

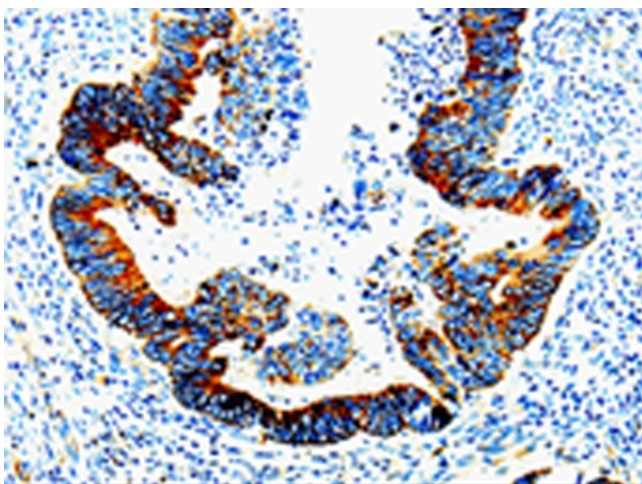
**Protein Families:** Druggable Genome, Transmembrane

**Protein Pathways:** Cytokine-cytokine receptor interaction, Jak-STAT signaling pathway

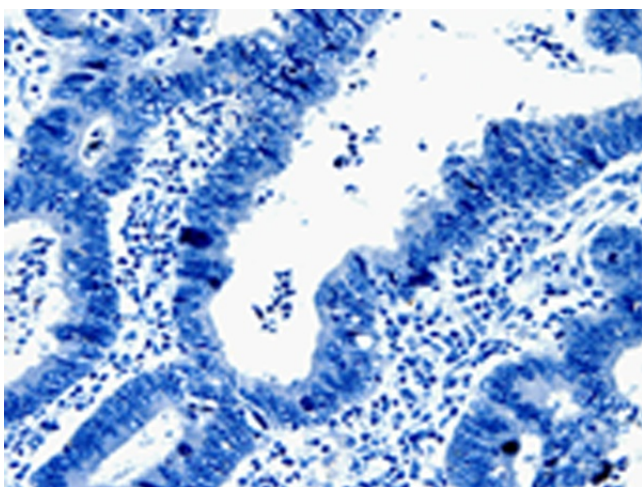
**Product images:**



Gel: 8%SDS-PAGE  
Lysate: 40 µg  
Lane: Human sigmoid tissue  
Primary antibody: TA321935 (IL23R Antibody) at dilution 1/300  
Secondary antibody: Goat anti rabbit IgG at 1/8000 dilution  
Exposure time: 30 seconds



Immunohistochemistry of paraffin-embedded Human rectal cancer tissue using TA321935 (IL23R Antibody) at dilution 1/10 (Original magnification: ×200)



Immunohistochemistry of paraffin-embedded Human rectal cancer tissue using TA321935 (IL23R Antibody) at dilution 1/10, treated with fusion protein. (Original magnification: ×200)