

## Product datasheet for **TA321934S**

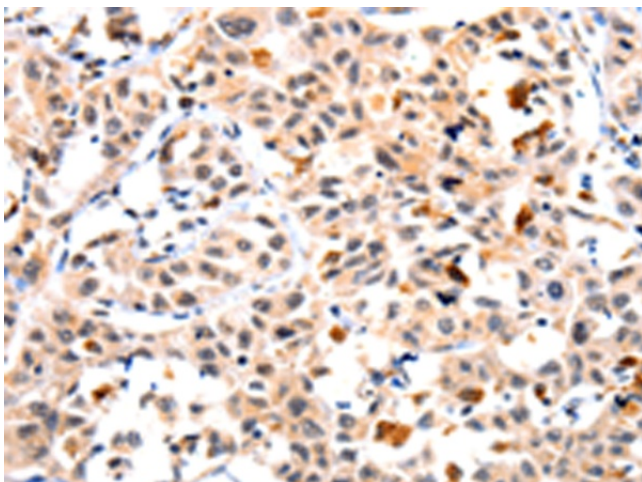
### IL23 Receptor (IL23R) Rabbit Polyclonal Antibody

#### Product data:

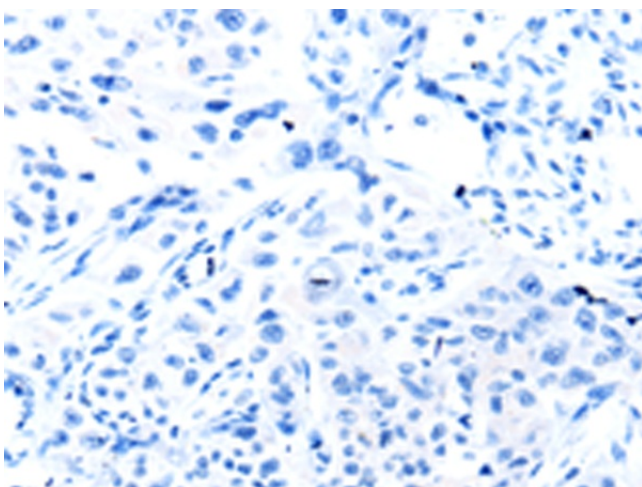
Product Type:	Primary Antibodies
Applications:	IHC
Recommended Dilution:	IHC: 10-50 Positive control: Human lung cancer Predicted cell location: Cytoplasm, Nucleus
Reactivity:	Human
Host:	Rabbit
Isotype:	IgG
Clonality:	Polyclonal
Immunogen:	Fusion protein corresponding to a region derived from 31-227 amino acids of Human Interleukin-23 receptor
Formulation:	PBS pH7.3, 0.05% NaN <sub>3</sub> , 50% glycerol
Purification:	Antigen affinity purification
Conjugation:	Unconjugated
Storage:	Store at -20°C as received.
Stability:	Stable for 12 months from date of receipt.
Gene Name:	interleukin 23 receptor
Database Link:	<a href="#">NP_653302</a> <a href="#">Entrez Gene 149233 Human</a> <a href="#">Q5VWK5</a>
Background:	The protein encoded by this gene is a subunit of the receptor for IL23A/IL23. This protein pairs with the receptor molecule IL12RB1/IL12Rbeta1; and both are required for IL23A signaling. This protein associates constitutively with Janus kinase 2 (JAK2); and also binds to transcription activator STAT3 in a ligand-dependent manner.
Synonyms:	interleukin 23 receptor; OTTHUMP00000010660
Protein Families:	Druggable Genome, Transmembrane
Protein Pathways:	Cytokine-cytokine receptor interaction, Jak-STAT signaling pathway



[View online »](#)

**Product images:**

Immunohistochemistry of paraffin-embedded Human lung cancer tissue using [TA321934] (IL23R Antibody) at dilution 1/10 (Original magnification:  $\times 200$ )



Immunohistochemistry of paraffin-embedded Human lung cancer tissue using [TA321934] (IL23R Antibody) at dilution 1/10, treated with fusion protein. (Original magnification:  $\times 200$ )