

Product datasheet for **TA321933S**

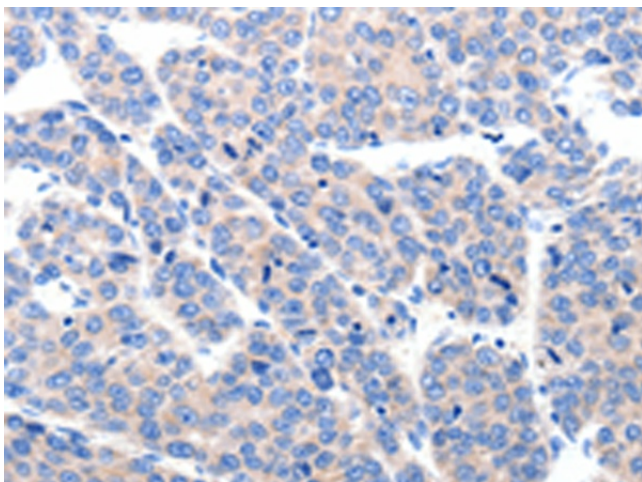
KCNH8 Rabbit Polyclonal Antibody

Product data:

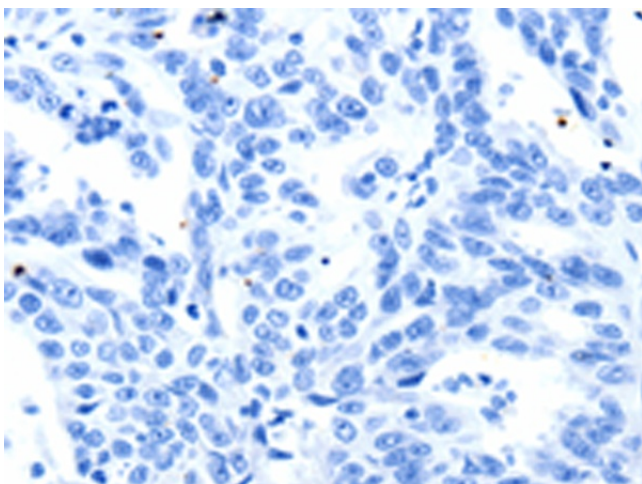
Product Type:	Primary Antibodies
Applications:	IHC
Recommended Dilution:	IHC: 25-100 Positive control: Human ovarian cancer Predicted cell location: Cytoplasm
Reactivity:	Human, Mouse, Rat
Host:	Rabbit
Isotype:	IgG
Clonality:	Polyclonal
Immunogen:	Synthetic peptide corresponding to a region derived from 1095-1107 amino acids of Human potassium voltage-gated channel, subfamily H (eag-related), member 8
Formulation:	PBS pH7.3, 0.05% NaN ₃ , 50% glycerol
Purification:	Antigen affinity purification
Conjugation:	Unconjugated
Storage:	Store at -20°C as received.
Stability:	Stable for 12 months from date of receipt.
Gene Name:	potassium voltage-gated channel subfamily H member 8
Database Link:	NP_653234 Entrez Gene 211468 Mouse Entrez Gene 246325 Rat Entrez Gene 131096 Human Q96L42
Background:	Voltage-gated potassium (Kv) channels represent the most complex class of voltage-gated ion channels from both functional and structural standpoints. Their diverse functions include regulating neurotransmitter release; heart rate; insulin secretion; neuronal excitability; epithelial electrolyte transport; smooth muscle contraction; and cell volume. This gene encodes a member of the potassium channel; voltage-gated; subfamily H. This member is a pore-forming (alpha) subunit.
Synonyms:	ELK; ELK1; elk3; Kv12.1
Protein Families:	Druggable Genome, Ion Channels: Potassium, Transmembrane



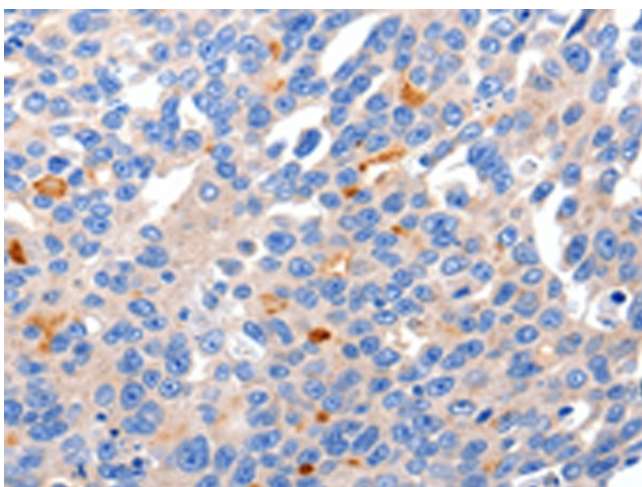
[View online »](#)

Product images:

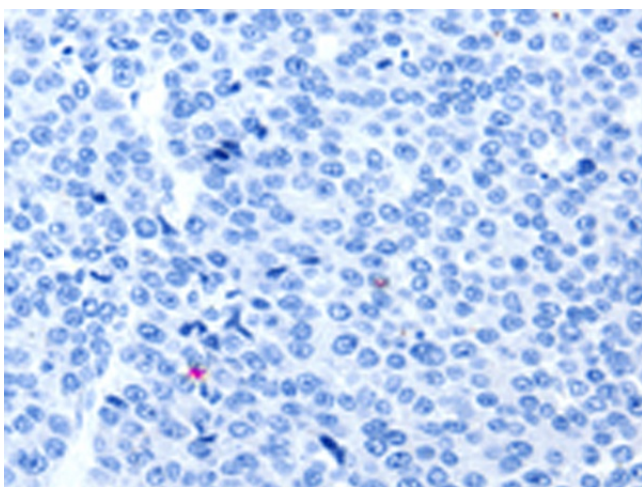
Immunohistochemistry of paraffin-embedded Human ovarian cancer tissue using [TA321933] (KCNH8 Antibody) at dilution 1/50 (Original magnification: ×200)



Immunohistochemistry of paraffin-embedded Human ovarian cancer tissue using [TA321933] (KCNH8 Antibody) at dilution 1/50, treated with synthetic peptide. (Original magnification: ×200)



Immunohistochemistry of paraffin-embedded Human liver cancer tissue using [TA321933] (KCNH8 Antibody) at dilution 1/50 (Original magnification: ×200)



Immunohistochemistry of paraffin-embedded Human liver cancer tissue using [TA321933] (KCNH8 Antibody) at dilution 1/50, treated with synthetic peptide. (Original magnification: ×200)