

## Product datasheet for **TA321932**

### KCNH8 Rabbit Polyclonal Antibody

#### Product data:

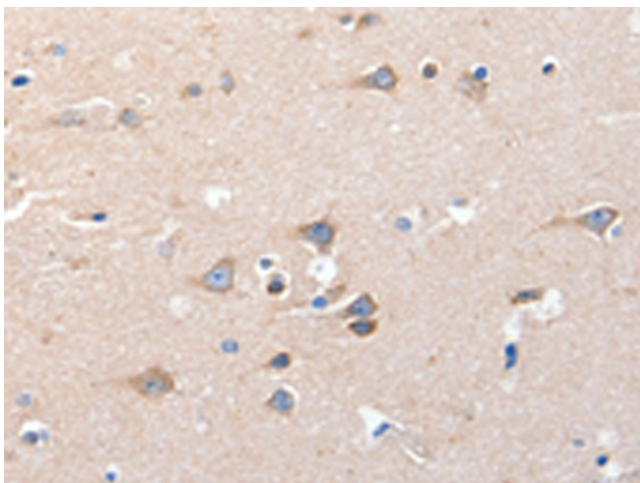
Product Type:	Primary Antibodies
Applications:	IHC
Recommended Dilution:	IHC: 10-50 Positive control: Human brain Predicted cell location: Cytoplasm
Reactivity:	Human, Mouse, Rat
Host:	Rabbit
Isotype:	IgG
Clonality:	Polyclonal
Immunogen:	Synthetic peptide corresponding to a region derived from 1095-1107 amino acids of Human potassium voltage-gated channel, subfamily H (eag-related), member 8
Formulation:	PBS pH7.3, 0.05% NaN <sub>3</sub> , 50% glycerol
Concentration:	lot specific
Purification:	Antigen affinity purification
Conjugation:	Unconjugated
Storage:	Store at -20°C as received.
Stability:	Stable for 12 months from date of receipt.
Gene Name:	potassium voltage-gated channel subfamily H member 8
Database Link:	<a href="#">NP_653234</a> <a href="#">Entrez Gene 211468 MouseEntrez Gene 246325 RatEntrez Gene 131096 Human Q96L42</a>
Background:	Voltage-gated potassium (Kv) channels represent the most complex class of voltage-gated ion channels from both functional and structural standpoints. Their diverse functions include regulating neurotransmitter release; heart rate; insulin secretion; neuronal excitability; epithelial electrolyte transport; smooth muscle contraction; and cell volume. This gene encodes a member of the potassium channel; voltage-gated; subfamily H. This member is a pore-forming (alpha) subunit.
Synonyms:	ELK; ELK1; elk3; Kv12.1



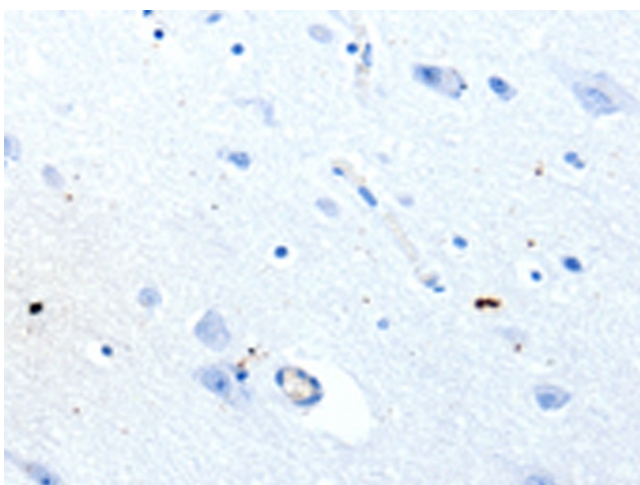
[View online »](#)

Protein Families: Druggable Genome, Ion Channels: Potassium, Transmembrane

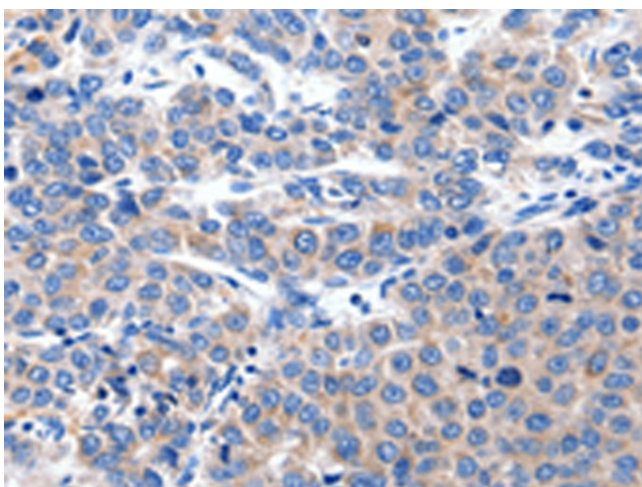
### Product images:



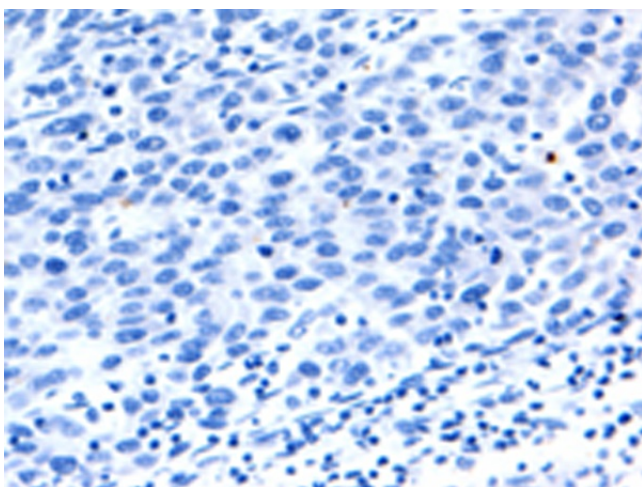
Immunohistochemistry of paraffin-embedded Human brain tissue using TA321932 (KCNH8 Antibody) at dilution 1/15 (Original magnification: ×200)



Immunohistochemistry of paraffin-embedded Human brain tissue using TA321932 (KCNH8 Antibody) at dilution 1/15, treated with synthetic peptide. (Original magnification: ×200)



Immunohistochemistry of paraffin-embedded Human liver cancer tissue using TA321932 (KCNH8 Antibody) at dilution 1/15 (Original magnification: ×200)



Immunohistochemistry of paraffin-embedded Human liver cancer tissue using TA321932 (KCNH8 Antibody) at dilution 1/15, treated with synthetic peptide. (Original magnification: ×200)