

## Product datasheet for **TA321930S**

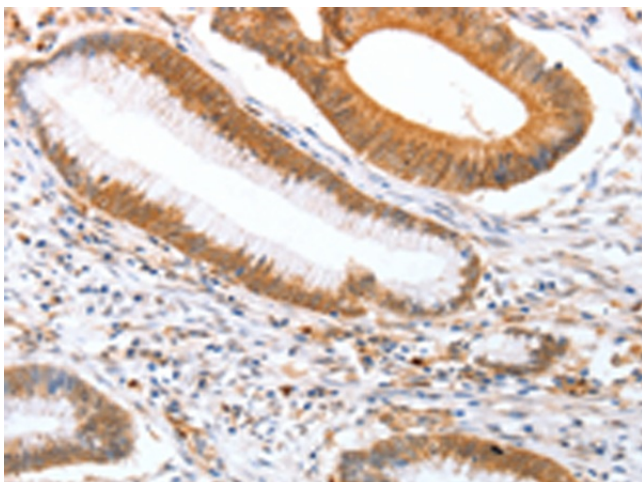
### DPPA2 Rabbit Polyclonal Antibody

#### Product data:

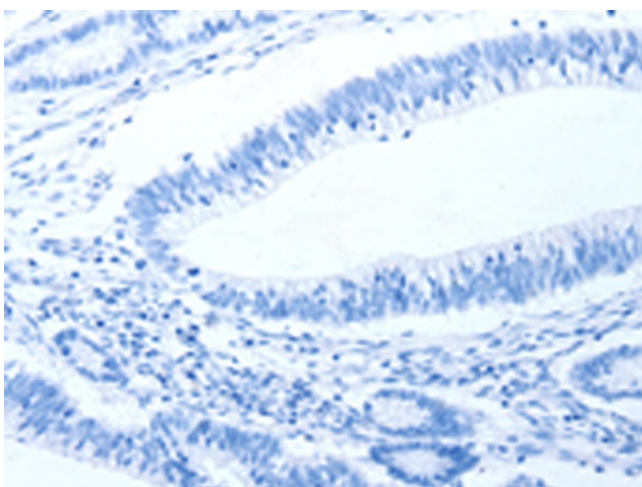
Product Type:	Primary Antibodies
Applications:	IHC
Recommended Dilution:	IHC: 25-100 Positive control: Human colon cancer Predicted cell location: Nucleus
Reactivity:	Human
Host:	Rabbit
Isotype:	IgG
Clonality:	Polyclonal
Immunogen:	Fusion protein corresponding to a region derived from 92-298 amino acids of human developmental pluripotency associated 2
Formulation:	PBS pH7.3, 0.05% NaN <sub>3</sub> , 50% glycerol
Purification:	Antigen affinity purification
Conjugation:	Unconjugated
Storage:	Store at -20°C as received.
Stability:	Stable for 12 months from date of receipt.
Gene Name:	developmental pluripotency associated 2
Database Link:	<a href="#">NP_620170</a> <a href="#">Entrez Gene 151871 Human</a> <a href="#">Q7Z7J5</a>
Background:	This protein binds to target gene promoters; including NKX2-5 and SYCE1; but not GATA4; and may be involved in the maintenance of the active epigenetic status of these genes. Expressed in embryonic stem cells. No expression is seen in 5 months embryo; mesenchymal stem cells; embryonic fibrocytes and adult tissues. It contains 1 SAP domain.
Synonyms:	CT100; ECAT15-2; PESCRG1
Protein Families:	Embryonic stem cells, Induced pluripotent stem cells, Stem cell - Pluripotency



[View online »](#)

**Product images:**

Immunohistochemistry of paraffin-embedded Human colon cancer tissue using [TA321930] (DPPA2 Antibody) at dilution 1/25 (Original magnification:  $\times 200$ )



Immunohistochemistry of paraffin-embedded Human colon cancer tissue using [TA321930] (DPPA2 Antibody) at dilution 1/25, treated with fusion protein. (Original magnification:  $\times 200$ )