

Product datasheet for TA321930

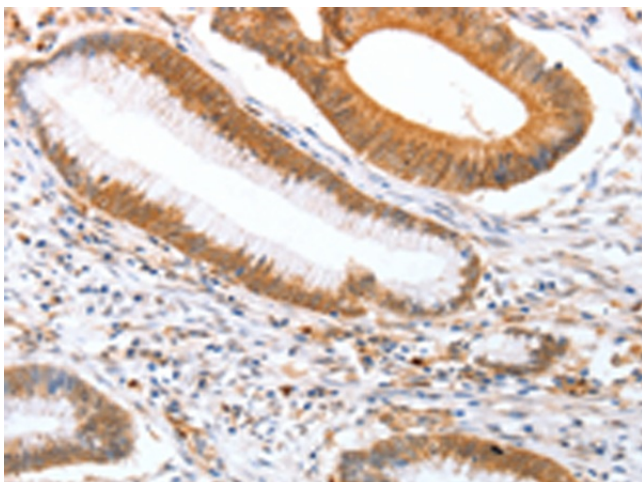
DPPA2 Rabbit Polyclonal Antibody

Product data:

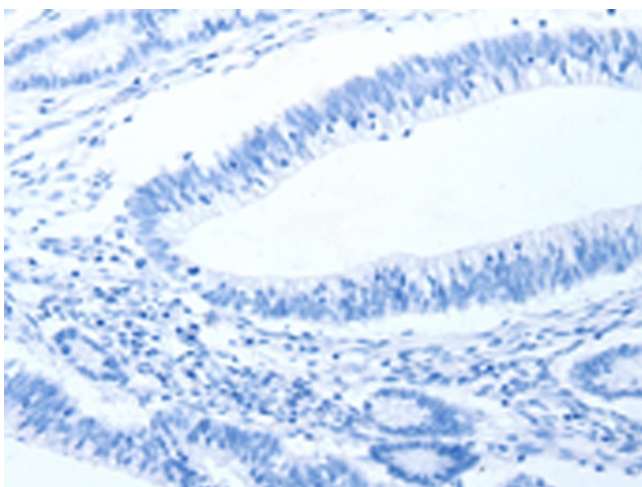
| | |
|-----------------------|---|
| Product Type: | Primary Antibodies |
| Applications: | IHC |
| Recommended Dilution: | IHC: 25-100 Positive control: Human colon cancer Predicted cell location: Nucleus |
| Reactivity: | Human |
| Host: | Rabbit |
| Isotype: | IgG |
| Clonality: | Polyclonal |
| Immunogen: | Fusion protein corresponding to a region derived from 92-298 amino acids of human developmental pluripotency associated 2 |
| Formulation: | PBS pH7.3, 0.05% NaN ₃ , 50% glycerol |
| Concentration: | lot specific |
| Purification: | Antigen affinity purification |
| Conjugation: | Unconjugated |
| Storage: | Store at -20°C as received. |
| Stability: | Stable for 12 months from date of receipt. |
| Gene Name: | developmental pluripotency associated 2 |
| Database Link: | NP_620170 Entrez Gene 151871 Human Q7Z7J5 |
| Background: | This protein binds to target gene promoters; including NKX2-5 and SYCE1; but not GATA4; and may be involved in the maintenance of the active epigenetic status of these genes. Expressed in embryonic stem cells. No expression is seen in 5 months embryo; mesenchymal stem cells; embryonic fibrocytes and adult tissues. It contains 1 SAP domain. |
| Synonyms: | CT100; ECAT15-2; PESCRG1 |
| Protein Families: | Embryonic stem cells, Induced pluripotent stem cells, Stem cell - Pluripotency |



[View online »](#)

Product images:

Immunohistochemistry of paraffin-embedded Human colon cancer tissue using TA321930 (DPPA2 Antibody) at dilution 1/25 (Original magnification: $\times 200$)



Immunohistochemistry of paraffin-embedded Human colon cancer tissue using TA321930 (DPPA2 Antibody) at dilution 1/25, treated with fusion protein. (Original magnification: $\times 200$)