

Product datasheet for **TA321928**

ACTRT1 Rabbit Polyclonal Antibody

Product data:

Product Type:	Primary Antibodies
Applications:	IHC, WB
Recommended Dilution:	WB: 200-1000 WB positive control: Human lymphoma tissue IHC: 10-50 Positive control: Human cervical cancer Predicted cell location: Cytoplasm
Reactivity:	Human
Host:	Rabbit
Isotype:	IgG
Clonality:	Polyclonal
Immunogen:	Fusion protein corresponding to C terminal 250 amino acids of human actin-related protein T1
Formulation:	PBS pH7.3, 0.05% NaN ₃ , 50% glycerol
Concentration:	lot specific
Purification:	Antigen affinity purification
Conjugation:	Unconjugated
Storage:	Store at -20°C as received.
Stability:	Stable for 12 months from date of receipt.
Predicted Protein Size:	42 kDa
Gene Name:	actin related protein T1
Database Link:	NP_612146 Entrez Gene 139741 Human Q8TDG2



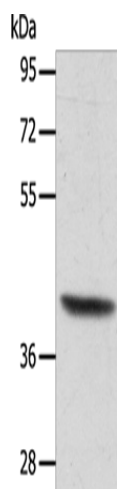
[View online »](#)

Background:

This gene encodes a protein related to the cytoskeletal protein beta-actin. This protein is a major component of the calyx in the perinuclear theca of mammalian sperm heads, and it therefore likely functions in spermatid formation. This gene is intronless and is similar to a related gene located on chromosome 1. A related pseudogene has also been identified approximately 75 kb downstream of this gene on chromosome X.

Synonyms:

AIP1; ARIP1; ARPT1; HSD27

Product images:

Gel: 10%SDS-PAGE

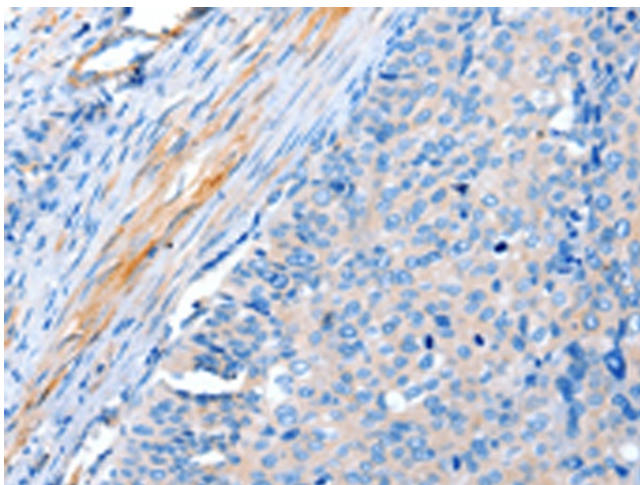
Lysate: 40 µg

Lane: Human lymphoma tissue

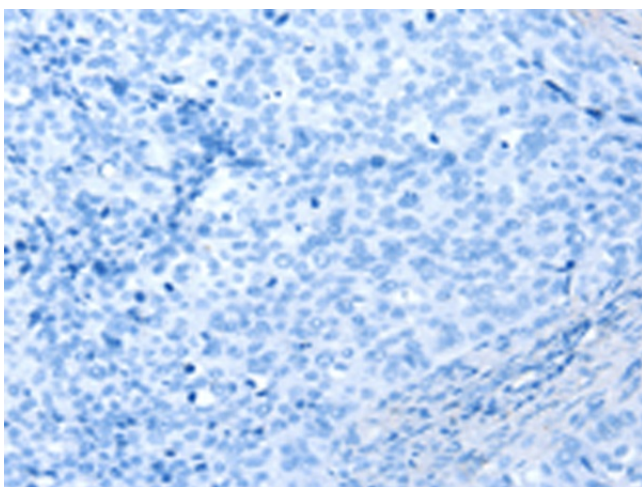
Primary antibody: TA321928 (ACTRT1 Antibody)
at dilution 1/350

Secondary antibody: Goat anti rabbit IgG at
1/8000 dilution

Exposure time: 5 seconds



Immunohistochemistry of paraffin-embedded
Human cervical cancer tissue using TA321928
(ACTRT1 Antibody) at dilution 1/15 (Original
magnification: ×200)



Immunohistochemistry of paraffin-embedded Human cervical cancer tissue using TA321928 (ACTRT1 Antibody) at dilution 1/15, treated with fusion protein. (Original magnification: ×200)