

## Product datasheet for **TA321927**

### ACTRT1 Rabbit Polyclonal Antibody

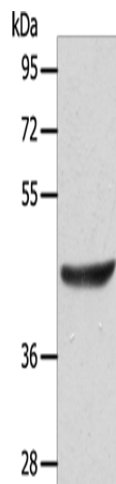
#### Product data:

Product Type:	Primary Antibodies
Applications:	WB
Recommended Dilution:	WB: 200-1000 WB positive control: Jurkat cells
Reactivity:	Human
Host:	Rabbit
Isotype:	IgG
Clonality:	Polyclonal
Immunogen:	Fusion protein corresponding to C terminal 250 amino acids of human actin-related protein T1
Formulation:	PBS pH7.3, 0.05% NaN <sub>3</sub> , 50% glycerol
Concentration:	lot specific
Purification:	Antigen affinity purification
Conjugation:	Unconjugated
Storage:	Store at -20°C as received.
Stability:	Stable for 12 months from date of receipt.
Predicted Protein Size:	42 kDa
Gene Name:	actin related protein T1
Database Link:	<a href="#">NP_612146</a> <a href="#">Entrez Gene 139741 Human</a> <a href="#">Q8TDG2</a>
Background:	This gene encodes a protein related to the cytoskeletal protein beta-actin. This protein is a major component of the calyx in the perinuclear theca of mammalian sperm heads; and it therefore likely functions in spermatid formation. This gene is intronless and is similar to a related gene located on chromosome 1. A related pseudogene has also been identified approximately 75 kb downstream of this gene on chromosome X.
Synonyms:	AIP1; ARIP1; ARPT1; HSD27



[View online »](#)

## Product images:



Gel: 10%SDS-PAGE  
Lysate: 40 µg  
Lane: Jurkat cells  
Primary antibody: TA321927 (ACTRT1 Antibody)  
at dilution 1/125  
Secondary antibody: Goat anti rabbit IgG at  
1/8000 dilution  
Exposure time: 10 seconds