

Product datasheet for **TA321918S**

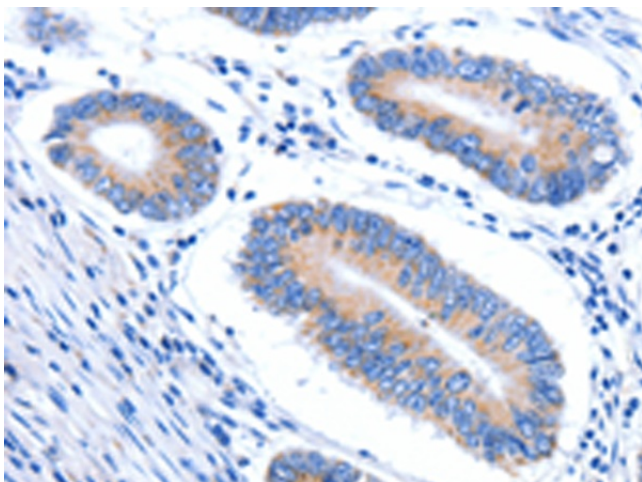
HINT2 Rabbit Polyclonal Antibody

Product data:

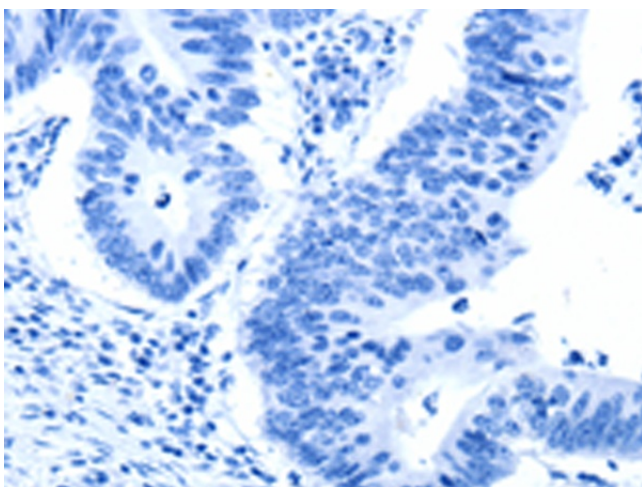
Product Type:	Primary Antibodies
Applications:	IHC
Recommended Dilution:	IHC: 10-50 Positive control: Human colon cancer Predicted cell location: Cytoplasm
Reactivity:	Human
Host:	Rabbit
Isotype:	IgG
Clonality:	Polyclonal
Immunogen:	Synthetic peptide corresponding to a region derived from 22-35 amino acids of Human histidine triad nucleotide binding protein 2
Formulation:	PBS pH7.3, 0.05% NaN ₃ , 50% glycerol
Purification:	Antigen affinity purification
Conjugation:	Unconjugated
Storage:	Store at -20°C as received.
Stability:	Stable for 12 months from date of receipt.
Gene Name:	histidine triad nucleotide binding protein 2
Database Link:	NP_115982 Entrez Gene 84681 Human Q9BX68
Background:	Histidine triad proteins; such as HINT2; are nucleotide hydrolases and transferases that act on the alpha-phosphate of ribonucleotides. Hydrolase probably involved in steroid biosynthesis. May play a role in apoptosis. Has adenosine phosphoramidase activity. High expression in liver and pancreas. Expression is significantly down-regulated in hepatocellular carcinoma (HCC) patients.
Synonyms:	HIT-17



[View online »](#)

Product images:

Immunohistochemistry of paraffin-embedded Human colon cancer tissue using [TA321918] (HINT2 Antibody) at dilution 1/20 (Original magnification: $\times 200$)



Immunohistochemistry of paraffin-embedded Human colon cancer tissue using [TA321918] (HINT2 Antibody) at dilution 1/20, treated with synthetic peptide. (Original magnification: $\times 200$)