

## Product datasheet for **TA321917S**

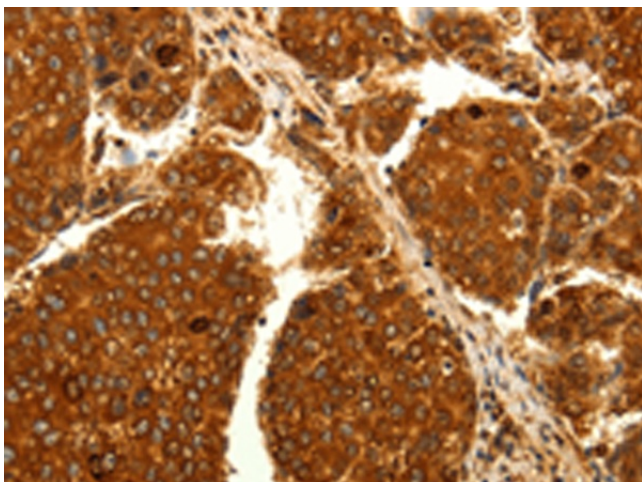
### MAP1LC3A Rabbit Polyclonal Antibody

#### Product data:

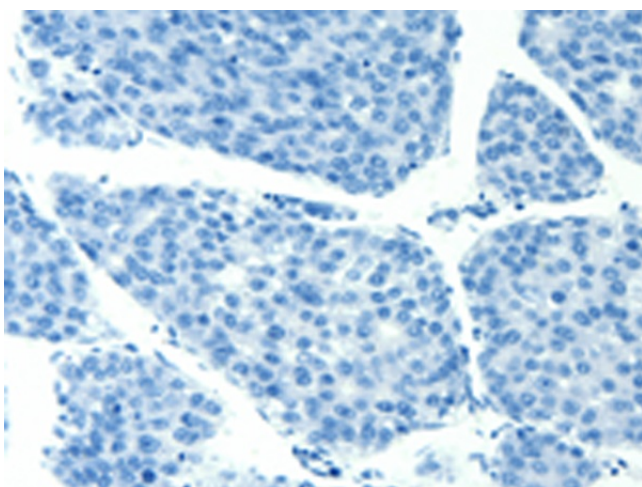
Product Type:	Primary Antibodies
Applications:	IHC
Recommended Dilution:	IHC: 50-200 Positive control: Human liver cancer Predicted cell location: Cytoplasm
Reactivity:	Human, Mouse, Rat
Host:	Rabbit
Isotype:	IgG
Clonality:	Polyclonal
Immunogen:	Fusion protein corresponding to a region derived from 1-120 amino acids of human microtubule-associated protein 1 light chain 3 alpha
Formulation:	PBS pH7.3, 0.05% NaN <sub>3</sub> , 50% glycerol
Purification:	Antigen affinity purification
Conjugation:	Unconjugated
Storage:	Store at -20°C as received.
Stability:	Stable for 12 months from date of receipt.
Gene Name:	microtubule associated protein 1 light chain 3 alpha
Database Link:	<a href="#">NP_115903</a> <a href="#">Entrez Gene 66734 Mouse</a> <a href="#">Entrez Gene 362245 Rat</a> <a href="#">Entrez Gene 84557 Human</a> <a href="#">Q9H492</a>
Background:	MAP1A and MAP1B are microtubule-associated proteins which mediate the physical interactions between microtubules and components of the cytoskeleton. MAP1A and MAP1B each consist of a heavy chain subunit and multiple light chain subunits. The protein encoded by this gene is one of the light chain subunits and can associate with either MAP1A or MAP1B. Two transcript variants encoding different isoforms have been found for this gene. The expression of variant 1 is suppressed in many tumor cell lines; suggesting that may be involved in carcinogenesis.
Synonyms:	ATG8E; LC3; LC3A; MAP1ALC3; MAP1BLC3



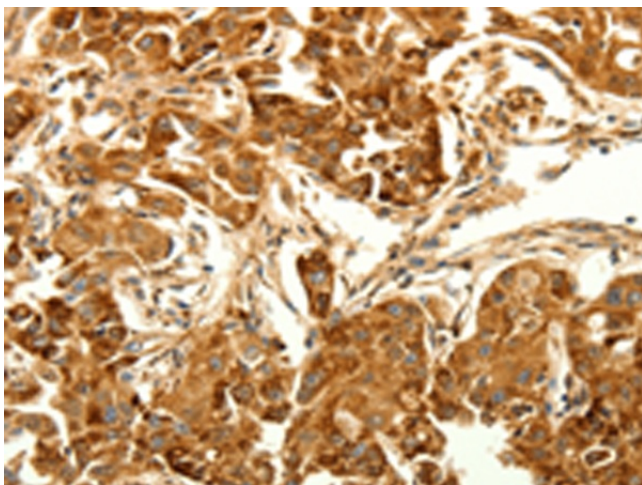
[View online »](#)

**Product images:**

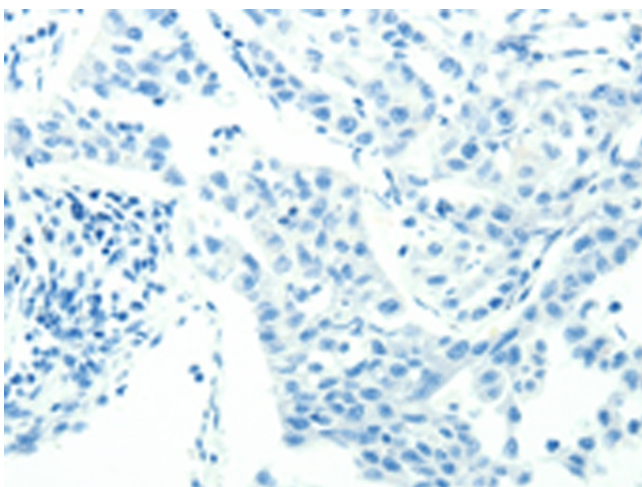
Immunohistochemistry of paraffin-embedded Human liver cancer tissue using [TA321917] (MAP1LC3A Antibody) at dilution 1/25 (Original magnification:  $\times 200$ )



Immunohistochemistry of paraffin-embedded Human liver cancer tissue using [TA321917] (MAP1LC3A Antibody) at dilution 1/25, treated with fusion protein. (Original magnification:  $\times 200$ )



Immunohistochemistry of paraffin-embedded Human lung cancer tissue using [TA321917] (MAP1LC3A Antibody) at dilution 1/25 (Original magnification:  $\times 200$ )



Immunohistochemistry of paraffin-embedded Human lung cancer tissue using [TA321917] (MAP1LC3A Antibody) at dilution 1/25, treated with fusion protein. (Original magnification:  $\times 200$ )