

Product datasheet for **TA321915**

Dysbindin (DTNBP1) Rabbit Polyclonal Antibody

Product data:

Product Type:	Primary Antibodies
Applications:	IHC
Recommended Dilution:	IHC: 20-100 Positive control: Human brain Predicted cell location: Cytoplasm
Reactivity:	Human
Host:	Rabbit
Isotype:	IgG
Clonality:	Polyclonal
Immunogen:	Synthetic peptide corresponding to a region derived from 347-351 amino acids of Human dystrobrevin binding protein 1
Formulation:	PBS pH7.3, 0.05% NaN ₃ , 50% glycerol
Concentration:	lot specific
Purification:	Antigen affinity purification
Conjugation:	Unconjugated
Storage:	Store at -20°C as received.
Stability:	Stable for 12 months from date of receipt.
Gene Name:	dystrobrevin binding protein 1
Database Link:	NP_898861 Entrez Gene 84062 Human Q96EV8
Background:	This gene encodes a protein that may play a role in organelle biogenesis associated with melanosomes; platelet dense granules; and lysosomes. A similar protein in mouse is a component of a protein complex termed biogenesis of lysosome-related organelles complex 1 (BLOC-1); and binds to alpha- and beta-dystrobrevins; which are components of the dystrophin-associated protein complex (DPC). Mutations in this gene are associated with Hermansky-Pudlak syndrome type 7. This gene may also be associated with schizophrenia. Multiple transcript variants encoding distinct isoforms have been identified for this gene.

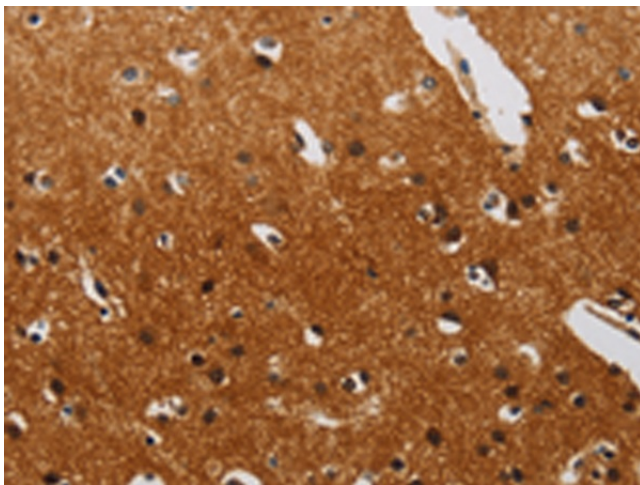


[View online »](#)

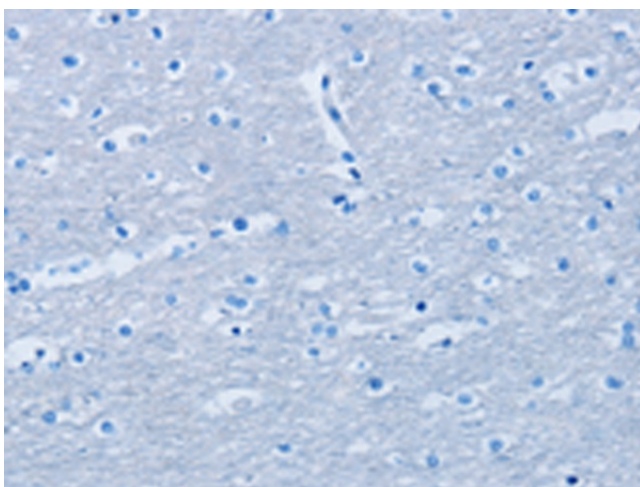
Synonyms: BLOC1S8; DBND; HPS7; My031; SDY

Protein Families: Druggable Genome

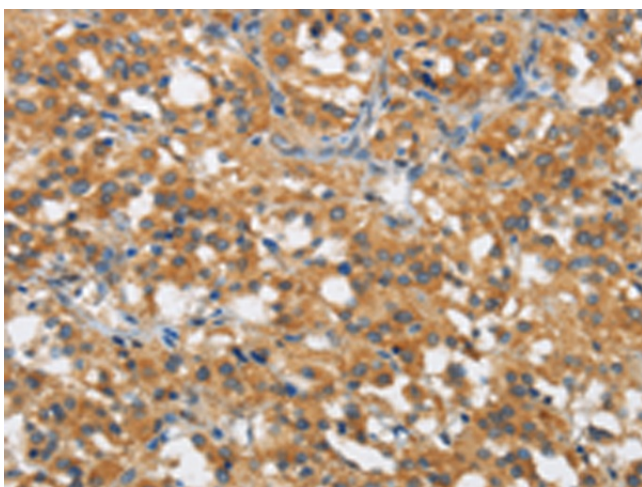
Product images:



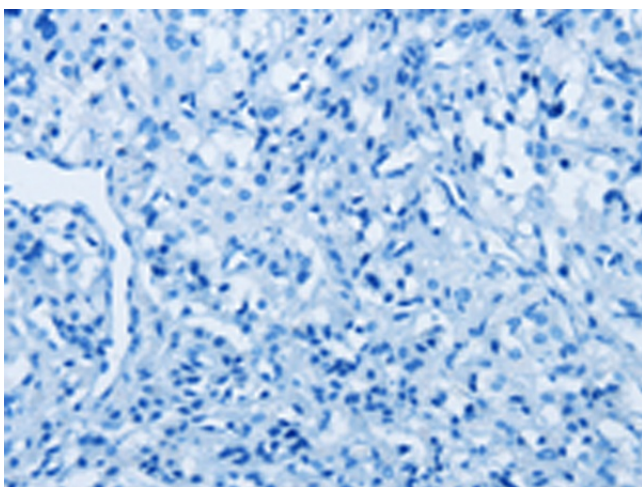
Immunohistochemistry of paraffin-embedded Human brain tissue using TA321915 (DTNBP1 Antibody) at dilution 1/20 (Original magnification: ×200)



Immunohistochemistry of paraffin-embedded Human brain tissue using TA321915 (DTNBP1 Antibody) at dilution 1/20, treated with synthetic peptide. (Original magnification: ×200)



Immunohistochemistry of paraffin-embedded Human thyroid cancer tissue using TA321915 (DTNBP1 Antibody) at dilution 1/20 (Original magnification: $\times 200$)



Immunohistochemistry of paraffin-embedded Human thyroid cancer tissue using TA321915 (DTNBP1 Antibody) at dilution 1/20, treated with synthetic peptide. (Original magnification: $\times 200$)