

## Product datasheet for **TA321914S**

### TRAF7 Rabbit Polyclonal Antibody

#### Product data:

Product Type:	Primary Antibodies
Applications:	IHC, WB
Recommended Dilution:	WB: 200-1000 WB positive control: Jurkat cells IHC: 15-50 Positive control: Human colon cancer Predicted cell location: Cytoplasm
Reactivity:	Human
Host:	Rabbit
Isotype:	IgG
Clonality:	Polyclonal
Immunogen:	Synthetic peptide corresponding to a region derived from 44-57 amino acids of human TNF receptor-associated factor 7, E3 ubiquitin protein ligase
Formulation:	PBS pH7.3, 0.05% NaN <sub>3</sub> , 50% glycerol
Purification:	Antigen affinity purification
Conjugation:	Unconjugated
Storage:	Store at -20°C as received.
Stability:	Stable for 12 months from date of receipt.
Predicted Protein Size:	67 kDa
Gene Name:	TNF receptor associated factor 7
Database Link:	<a href="#">NP_115647</a> <a href="#">Entrez Gene 84231 Human</a> <a href="#">Q6Q0C0</a>
Background:	Tumor necrosis factor (TNF; see MIM 191160) receptor-associated factors; such as TRAF7; are signal transducers for members of the TNF receptor superfamily (see MIM 191190). TRAFs are composed of an N-terminal cysteine/histidine-rich region containing zinc RING and/or zinc finger motifs; a coiled-coil (leucine zipper) motif; and a homologous region that defines the TRAF family; the TRAF domain; which is involved in self-association and receptor binding.

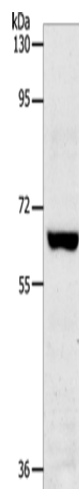


[View online »](#)

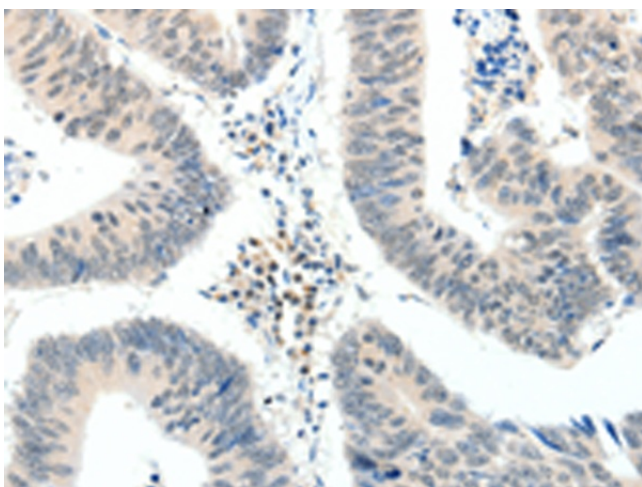
Synonyms: RFWD1; RNF119

Protein Families: Druggable Genome, Transcription Factors

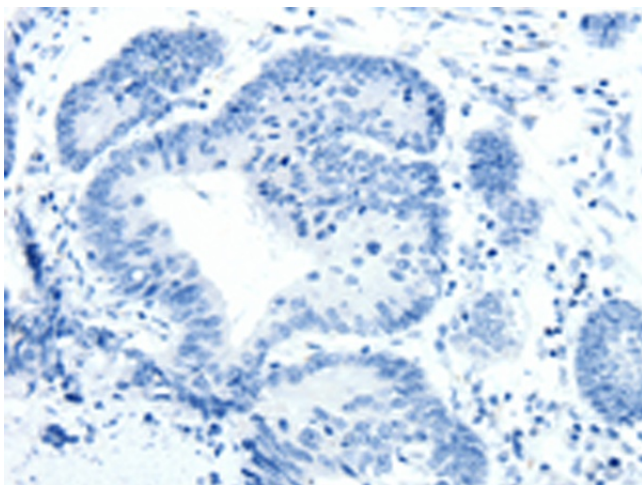
### Product images:



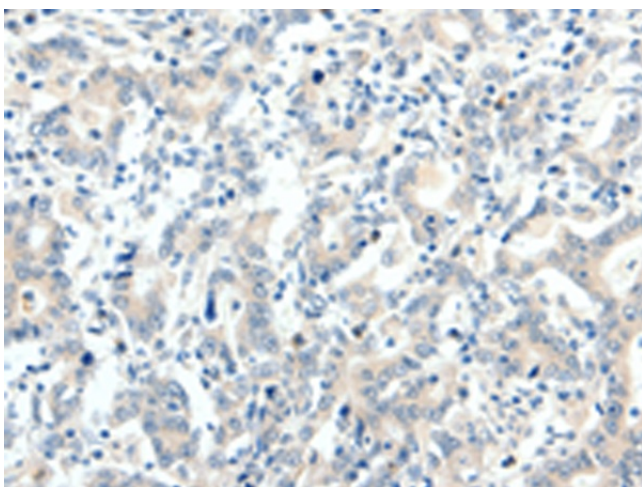
Gel: 8%SDS-PAGE  
Lysate: 40 µg  
Lane: Jurkat cells  
Primary antibody: [TA321914] (TRAF7 Antibody) at dilution 1/300  
Secondary antibody: Goat anti rabbit IgG at 1/8000 dilution  
Exposure time: 2 minutes



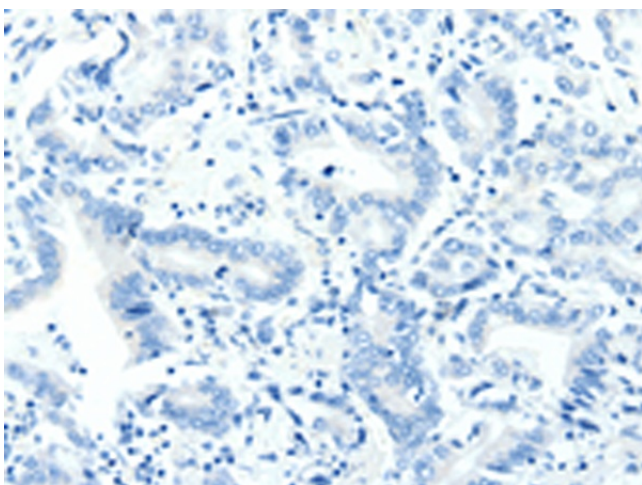
Immunohistochemistry of paraffin-embedded Human colon cancer tissue using [TA321914] (TRAF7 Antibody) at dilution 1/20 (Original magnification: ×200)



Immunohistochemistry of paraffin-embedded Human colon cancer tissue using [TA321914] (TRAF7 Antibody) at dilution 1/20, treated with synthetic peptide. (Original magnification: ×200)



Immunohistochemistry of paraffin-embedded Human gastric cancer tissue using [TA321914] (TRAF7 Antibody) at dilution 1/20 (Original magnification: ×200)



Immunohistochemistry of paraffin-embedded Human gastric cancer tissue using [TA321914] (TRAF7 Antibody) at dilution 1/20, treated with synthetic peptide. (Original magnification: ×200)