

## Product datasheet for **TA321912**

### SPATA16 Rabbit Polyclonal Antibody

#### Product data:

Product Type:	Primary Antibodies
Applications:	IHC, WB
Recommended Dilution:	WB: 500-2000 WB positive control: Mouse brain tissue lysate IHC: 150-300 Positive control: Human esophagus cancer Predicted cell location: Cytoplasm
Reactivity:	Human, Mouse
Host:	Rabbit
Isotype:	IgG
Clonality:	Polyclonal
Immunogen:	Fusion protein corresponding to C terminal 250 amino acids of human spermatogenesis associated 16
Formulation:	PBS pH7.3, 0.05% NaN <sub>3</sub> , 50% glycerol
Concentration:	lot specific
Purification:	Antigen affinity purification
Conjugation:	Unconjugated
Storage:	Store at -20°C as received.
Stability:	Stable for 12 months from date of receipt.
Predicted Protein Size:	65 kDa
Gene Name:	spermatogenesis associated 16
Database Link:	<a href="#">NP_114161</a> <a href="#">Entrez Gene 70862 Mouse</a> <a href="#">Entrez Gene 83893 Human</a> <a href="#">Q9BXB7</a>



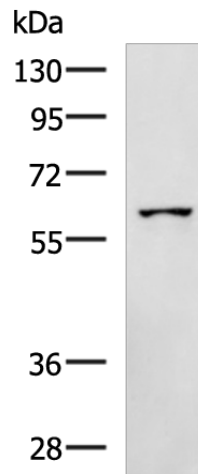
[View online »](#)

**Background:**

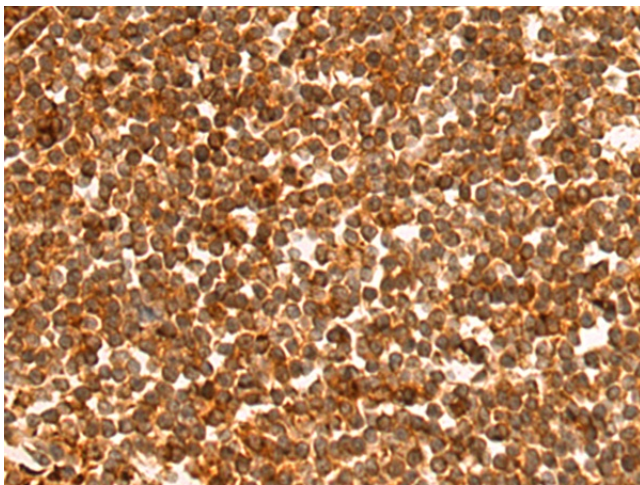
This gene encodes a testis-specific protein that belongs to the tetratricopeptide repeat-like superfamily. The encoded protein localizes to the Golgi apparatus and may play a role in spermatogenesis. The SPATA16 protein contains a region of homology to the mouse male enhanced antigen-2; a SCOP domain belonging to the tetratricopeptide repeat-like superfamily; 3 glycosylation sites; and several phosphorylation sites. The mouse and human proteins share 77% sequence identity. Northern blot analysis of multiple human tissues detected a strong signal in testis and weak expression in pancreas and kidney. Laser confocal microscopy localized a GFP-SPATA16 fusion protein specifically to the Golgi apparatus.

**Synonyms:**

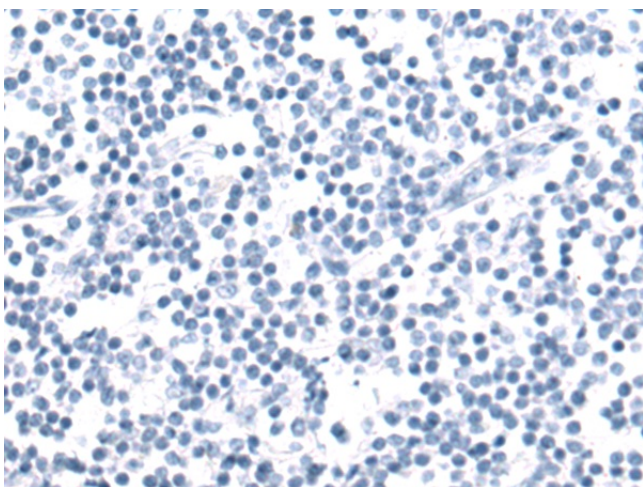
NYD-SP12; SPGF6

**Product images:**

Gel: 8%SDS-PAGE  
Lysate: 40 µg  
Lane: Mouse brain tissue lysate  
Primary antibody: TA321912 (SPATA16 Antibody) at dilution 1/800  
Secondary antibody: Goat anti rabbit IgG at 1/5000 dilution  
Exposure time: 1 minute



Immunohistochemistry of paraffin-embedded Human esophagus cancer tissue using TA321912 (SPATA16 Antibody) at dilution 1/135 (Original magnification: ×200)



Immunohistochemistry of paraffin-embedded Human esophagus cancer tissue using TA321912 (SPATA16 Antibody) at dilution 1/135, treated with fusion protein. (Original magnification: x200)