

Product datasheet for **TA321911**

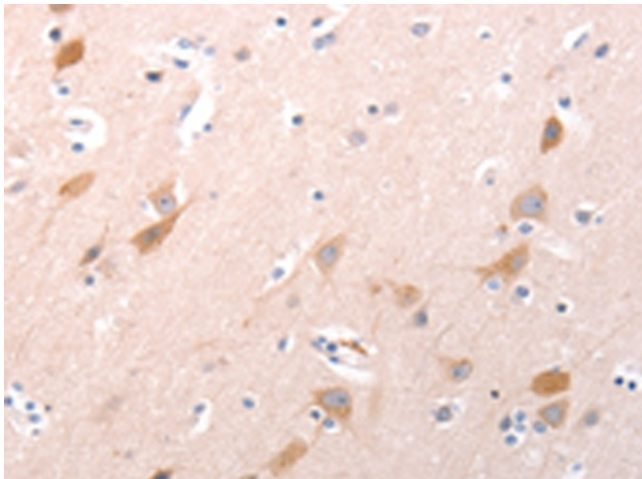
CTRP6 (C1QTNF6) Rabbit Polyclonal Antibody

Product data:

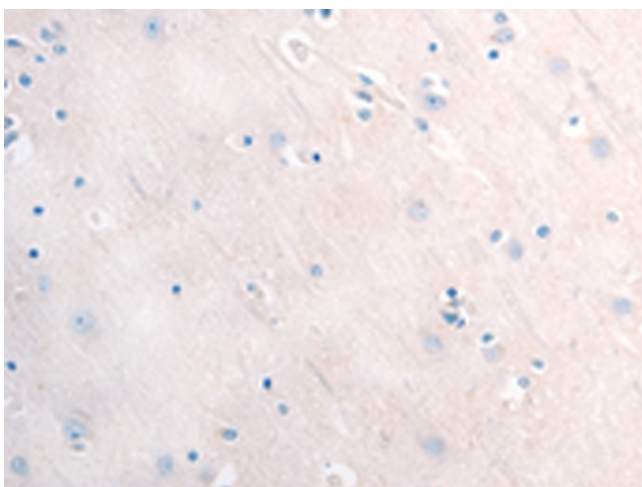
Product Type:	Primary Antibodies
Applications:	IHC
Recommended Dilution:	IHC: 25-100 Positive control: Human brain Predicted cell location: Cytoplasm
Reactivity:	Human
Host:	Rabbit
Isotype:	IgG
Clonality:	Polyclonal
Immunogen:	Fusion protein corresponding to a region derived from 38-259 amino acids of human C1q and tumor necrosis factor related protein 6
Formulation:	PBS pH7.3, 0.05% NaN ₃ , 50% glycerol
Concentration:	lot specific
Purification:	Antigen affinity purification
Conjugation:	Unconjugated
Storage:	Store at -20°C as received.
Stability:	Stable for 12 months from date of receipt.
Gene Name:	C1q and tumor necrosis factor related protein 6
Database Link:	NP_114116 Entrez Gene 114904 Human Q9BXI9
Background:	This protein is not uniformly distributed but rather focally localized in hepatocellular carcinoma cells and the tumor endothelial cells. It may play a role in metabolism and immunity. CTRPs acts as new molecular mediators connecting inflammatory and metabolic diseases.
Synonyms:	CTFP6; CTRP6; ZACRP6
Protein Families:	Secreted Protein, Transmembrane



[View online »](#)

Product images:

Immunohistochemistry of paraffin-embedded Human brain tissue using TA321911 (C1QTNF6 Antibody) at dilution 1/30 (Original magnification: ×200)



Immunohistochemistry of paraffin-embedded Human brain tissue using TA321911 (C1QTNF6 Antibody) at dilution 1/30, treated with fusion protein. (Original magnification: ×200)