

## Product datasheet for **TA321903**

### Adiponectin Receptor 2 (ADIPOR2) Rabbit Polyclonal Antibody

#### Product data:

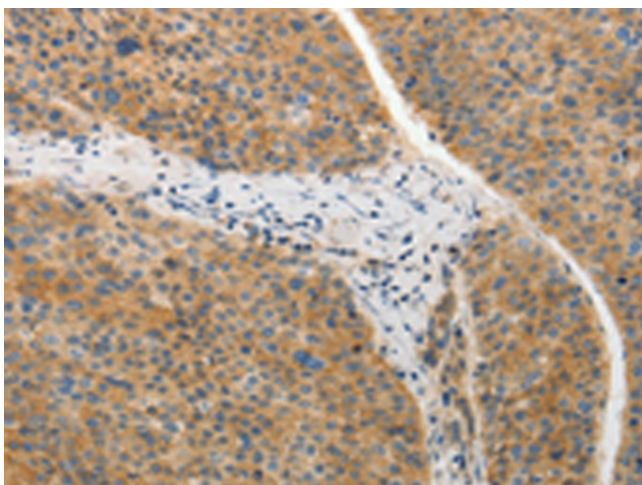
Product Type:	Primary Antibodies
Applications:	IHC
Recommended Dilution:	IHC: 25-100 Positive control: Human liver cancer Predicted cell location: Cytoplasm
Reactivity:	Human, Mouse
Host:	Rabbit
Isotype:	IgG
Clonality:	Polyclonal
Immunogen:	Synthetic peptide corresponding to a region derived from 11-24 amino acids of human adiponectin receptor 2
Formulation:	PBS pH7.3, 0.05% NaN <sub>3</sub> , 50% glycerol
Concentration:	lot specific
Purification:	Antigen affinity purification
Conjugation:	Unconjugated
Storage:	Store at -20°C as received.
Stability:	Stable for 12 months from date of receipt.
Gene Name:	adiponectin receptor 2
Database Link:	<a href="#">NP_078827</a> <a href="#">Entrez Gene 68465 Mouse</a> <a href="#">Entrez Gene 79602 Human</a> <a href="#">Q86V24</a>
Background:	The adiponectin receptors; ADIPOR1 (MIM 607945) and ADIPOR2; serve as receptors for globular and full-length adiponectin (MIM 605441) and mediate increased AMPK (see MIM 602739) and PPAR-alpha (PPARA; MIM 170998) ligand activities; as well as fatty acid oxidation and glucose uptake by adiponectin .
Synonyms:	ACDCR2; PAQR2
Protein Families:	Druggable Genome, Transmembrane



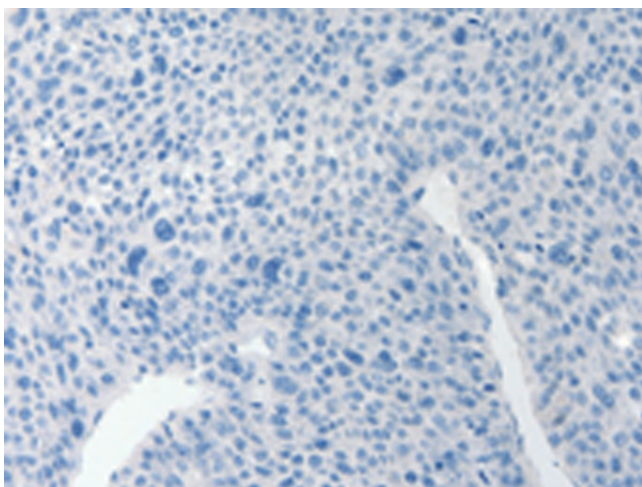
[View online »](#)

Protein Pathways: Adipocytokine signaling pathway

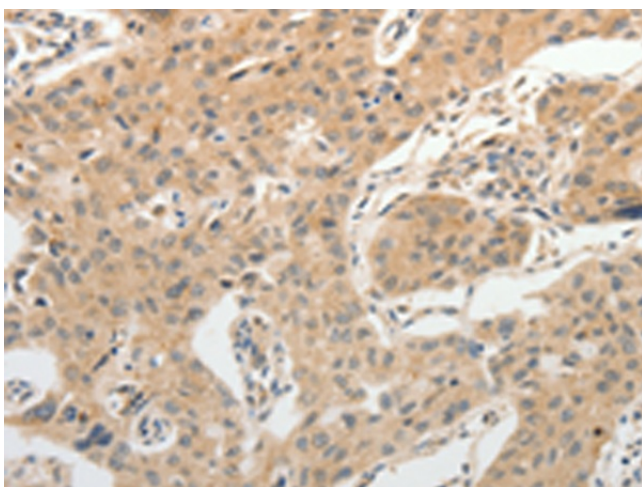
**Product images:**



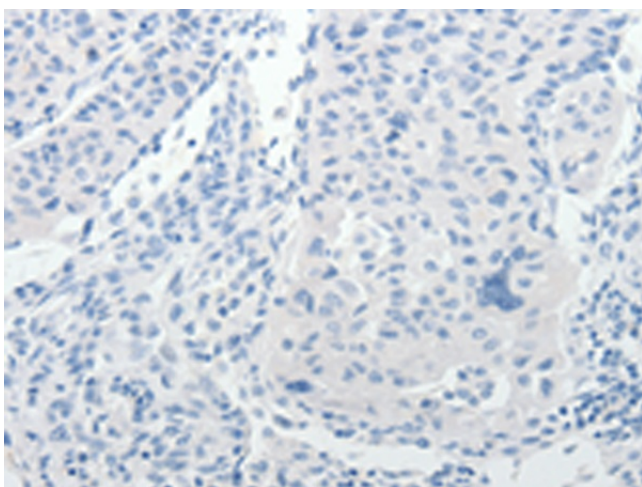
Immunohistochemistry of paraffin-embedded Human liver cancer tissue using TA321903 (ADIPOR2 Antibody) at dilution 1/20 (Original magnification:  $\times 200$ )



Immunohistochemistry of paraffin-embedded Human liver cancer tissue using TA321903 (ADIPOR2 Antibody) at dilution 1/20, treated with synthetic peptide. (Original magnification:  $\times 200$ )



Immunohistochemistry of paraffin-embedded Human lung cancer tissue using TA321903 (ADIPOR2 Antibody) at dilution 1/20 (Original magnification:  $\times 200$ )



Immunohistochemistry of paraffin-embedded Human lung cancer tissue using TA321903 (ADIPOR2 Antibody) at dilution 1/20, treated with synthetic peptide. (Original magnification:  $\times 200$ )