

Product datasheet for **TA321898**

LC3B (MAP1LC3B) Rabbit Polyclonal Antibody

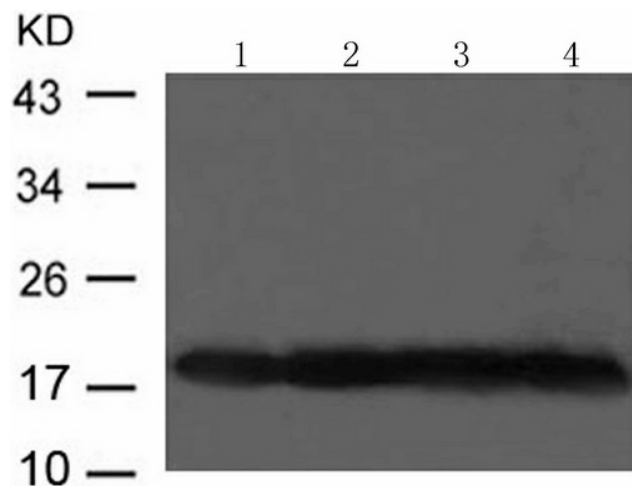
Product data:

Product Type:	Primary Antibodies
Applications:	WB
Recommended Dilution:	WB: 1:500-1000
Reactivity:	Human, Mouse, Rat
Host:	Rabbit
Isotype:	IgG
Clonality:	Polyclonal
Immunogen:	Peptide sequence around aa. 112-116 (V-Y-A-S-Q) derived from Human LC3.
Formulation:	PBS pH7.3, 0.05% NaN ₃ , 50% glycerol
Concentration:	lot specific
Purification:	Antigen affinity purification
Conjugation:	Unconjugated
Storage:	Store at -20°C as received.
Stability:	Stable for 12 months from date of receipt.
Predicted Protein Size:	14 kDa
Gene Name:	microtubule associated protein 1 light chain 3 beta
Database Link:	NP_073729 Entrez Gene 64862 Rat Entrez Gene 67443 Mouse Entrez Gene 81631 Human Q9GZQ8
Background:	MAP1A and MAP1B are microtubule-associated proteins which mediate the physical interactions between microtubules and components of the cytoskeleton. MAP1A and MAP1B each consist of a heavy chain subunit and multiple light chain subunits. The protein encoded by this gene is one of the light chain subunits and can associate with either MAP1A or MAP1B. Two transcript variants encoding different isoforms have been found for this gene. The expression of variant 1 is suppressed in many tumor cell lines, suggesting that may be involved in carcinogenesis.
Synonyms:	1BLC3; ATG8F; LC3B; MAP1A; MAP1LC3B-a



[View online »](#)

Product images:



Predicted band size: 14 kDa. Positive control: K-562, HeLa, Jurkat and 293 cells lysate.
Recommended dilution: 1/ 500-1000. (Gel: 12%SDS-PAGE Lane 1, 2, 3, 4: K-562, HeLa, Jurkat and 293 cells lysate Lysates: 30 ug per lane
Primary antibody: 1/500 dilution Secondary antibody: Goat anti Rabbit IgG - H&L (HRP) at 1/10000 dilution Exposure time: 1 minute)