

Product datasheet for **TA321894S**

EDAR Rabbit Polyclonal Antibody

Product data:

Product Type:	Primary Antibodies
Applications:	IHC, WB
Recommended Dilution:	WB: 200-1000 WB positive control: Human prostate and placenta tissue IHC: 25-100 Positive control: Human breast cancer Predicted cell location: Cytoplasm
Reactivity:	Human, Mouse
Host:	Rabbit
Isotype:	IgG
Clonality:	Polyclonal
Immunogen:	Synthetic peptide corresponding to a region derived from 148-161 amino acids of Human Ectodysplasin-A receptor
Formulation:	PBS pH7.3, 0.05% NaN ₃ , 50% glycerol
Purification:	Antigen affinity purification
Conjugation:	Unconjugated
Storage:	Store at -20°C as received.
Stability:	Stable for 12 months from date of receipt.
Gene Name:	ectodysplasin A receptor
Database Link:	NP_071731 Entrez Gene 13608 Mouse Entrez Gene 10913 Human Q9UNE0
Background:	This gene encodes a member of the tumor necrosis factor receptor family. The encoded transmembrane protein is a receptor for the soluble ligand ectodysplasin A; and can activate the nuclear factor-kappaB; JNK; and caspase-independent cell death pathways. It is required for the development of hair; teeth; and other ectodermal derivatives. Mutations in this gene result in autosomal dominant and recessive forms of hypohidrotic ectodermal dysplasia.
Synonyms:	DL; ECTD10A; ECTD10B; ED1R; ED3; ED5; EDA-A1R; EDA1R; EDA3; HRM1

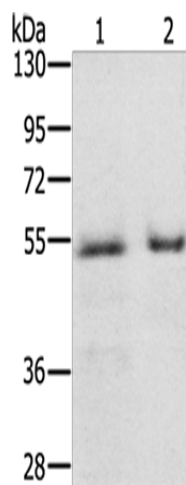


[View online »](#)

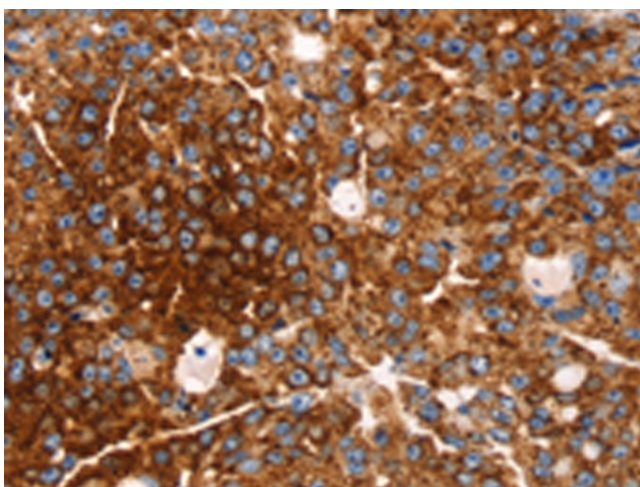
Protein Families: Druggable Genome, Transmembrane

Protein Pathways: Cytokine-cytokine receptor interaction

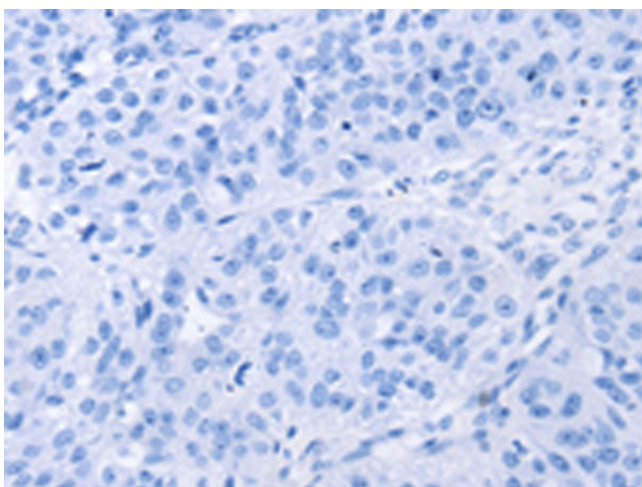
Product images:



Gel: 8%SDS-PAGE
Lysate: 40 µg
Lane 1-2: Human prostate tissue
Human placenta tissue
Primary antibody: [TA321894] (EDAR Antibody) at dilution 1/200
Secondary antibody: Goat anti rabbit IgG at 1/8000 dilution
Exposure time: 2 minutes



Immunohistochemistry of paraffin-embedded Human breast cancer tissue using [TA321894] (EDAR Antibody) at dilution 1/35 (Original magnification: ×200)



Immunohistochemistry of paraffin-embedded Human breast cancer tissue using [TA321894] (EDAR Antibody) at dilution 1/35, treated with synthetic peptide. (Original magnification: ×200)