

Product datasheet for **TA321890S**

RAB18 Rabbit Polyclonal Antibody

Product data:

Product Type:	Primary Antibodies
Applications:	IHC, WB
Recommended Dilution:	WB: 500-2000 WB positive control: Mouse heart tissue IHC: 200-500 Positive control: Human liver cancer Predicted cell location: Cytoplasm
Reactivity:	Human, Mouse, Rat
Host:	Rabbit
Isotype:	IgG
Clonality:	Polyclonal
Immunogen:	Synthetic peptide corresponding to a region derived from 128-141 amino acids of Human Ras-related protein Rab-18
Formulation:	PBS pH7.3, 0.05% NaN ₃ , 50% glycerol
Purification:	Antigen affinity purification
Conjugation:	Unconjugated
Storage:	Store at -20°C as received.
Stability:	Stable for 12 months from date of receipt.
Predicted Protein Size:	26 kDa
Gene Name:	RAB18, member RAS oncogene family
Database Link:	NP_067075 Entrez Gene 19330 MouseEntrez Gene 307039 RatEntrez Gene 22931 Human Q9NP72
Background:	The protein encoded by this gene is a member of a family of Ras-related small GTPases that regulate membrane trafficking in organelles and transport vesicles. Knockdown studies in zebrafish suggest that this protein may have a role in eye and brain development. Mutations in this gene are associated with Warburg micro syndrome type 3. Alternatively spliced transcript variants have been found for this gene.

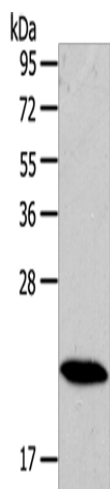


[View online »](#)

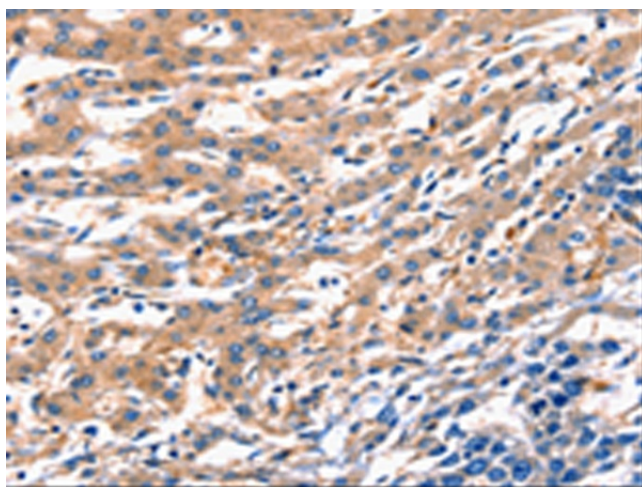
Synonyms: RAB18LI1; WARBM3

Protein Families: Druggable Genome

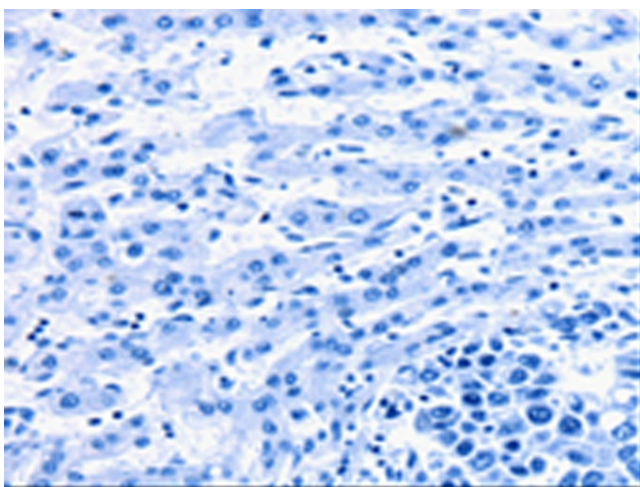
Product images:



Gel: 10%SDS-PAGE
Lysate: 40 µg
Lane: Mouse heart tissue
Primary antibody: [TA321890] (RAB18 Antibody) at dilution 1/400
Secondary antibody: Goat anti rabbit IgG at 1/8000 dilution
Exposure time: 1 second



Immunohistochemistry of paraffin-embedded Human liver cancer tissue using [TA321890] (RAB18 Antibody) at dilution 1/300 (Original magnification: ×200)



Immunohistochemistry of paraffin-embedded Human liver cancer tissue using [TA321890] (RAB18 Antibody) at dilution 1/300, treated with synthetic peptide. (Original magnification: $\times 200$)