

Product datasheet for **TA321890**

RAB18 Rabbit Polyclonal Antibody

Product data:

| | |
|-------------------------|---|
| Product Type: | Primary Antibodies |
| Applications: | IHC, WB |
| Recommended Dilution: | WB: 500-2000 WB positive control: Mouse heart tissue IHC: 200-500 Positive control: Human liver cancer Predicted cell location: Cytoplasm |
| Reactivity: | Human, Mouse, Rat |
| Host: | Rabbit |
| Isotype: | IgG |
| Clonality: | Polyclonal |
| Immunogen: | Synthetic peptide corresponding to a region derived from 128-141 amino acids of Human Ras-related protein Rab-18 |
| Formulation: | PBS pH7.3, 0.05% NaN ₃ , 50% glycerol |
| Concentration: | lot specific |
| Purification: | Antigen affinity purification |
| Conjugation: | Unconjugated |
| Storage: | Store at -20°C as received. |
| Stability: | Stable for 12 months from date of receipt. |
| Predicted Protein Size: | 26 kDa |
| Gene Name: | RAB18, member RAS oncogene family |
| Database Link: | NP_067075 Entrez Gene 19330 Mouse Entrez Gene 307039 Rat Entrez Gene 22931 Human Q9NP72 |



[View online »](#)

Background:

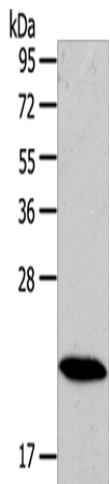
The protein encoded by this gene is a member of a family of Ras-related small GTPases that regulate membrane trafficking in organelles and transport vesicles. Knockdown studies in zebrafish suggest that this protein may have a role in eye and brain development. Mutations in this gene are associated with Warburg micro syndrome type 3. Alternatively spliced transcript variants have been found for this gene.

Synonyms:

RAB18LI1; WARBM3

Protein Families:

Druggable Genome

Product images:

Gel: 10%SDS-PAGE

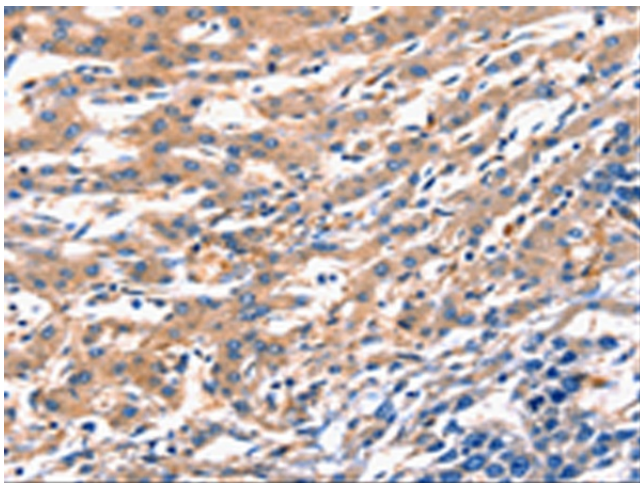
Lysate: 40 μ g

Lane: Mouse heart tissue

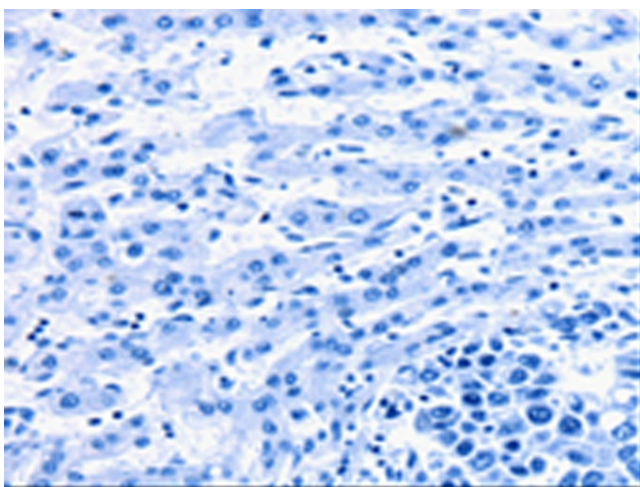
Primary antibody: TA321890 (RAB18 Antibody) at dilution 1/400

Secondary antibody: Goat anti rabbit IgG at 1/8000 dilution

Exposure time: 1 second



Immunohistochemistry of paraffin-embedded Human liver cancer tissue using TA321890 (RAB18 Antibody) at dilution 1/300 (Original magnification: \times 200)



Immunohistochemistry of paraffin-embedded Human liver cancer tissue using TA321890 (RAB18 Antibody) at dilution 1/300, treated with synthetic peptide. (Original magnification: ×200)